

# Керамические имплантаты Zeramex XT

## Техническое описание

По вопросам продаж и поддержки обращайтесь:

Алматы (727)345-47-04  
Ангарск (3955)60-70-56  
Архангельск (8182)63-90-72  
Астрахань (8512)99-46-04  
Барнаул (3852)73-04-60  
Белгород (4722)40-23-64  
Благовещенск (4162)22-76-07  
Брянск (4832)59-03-52  
Владивосток (423)249-28-31  
Владикавказ (8672)28-90-48  
Владимир (4922)49-43-18  
Волгоград (844)278-03-48  
Вологда (8172)26-41-59  
Воронеж (473)204-51-73  
Екатеринбург (343)384-55-89

Иваново (4932)77-34-06  
Ижевск (3412)26-03-58  
Иркутск (395)279-98-46  
Казань (843)206-01-48  
Калининград (4012)72-03-81  
Калуга (4842)92-23-67  
Кемерово (3842)65-04-62  
Киров (8332)68-02-04  
Коломна (4966)23-41-49  
Кострома (4942)77-07-48  
Краснодар (861)203-40-90  
Красноярск (391)204-63-61  
Курск (4712)77-13-04  
Курган (3522)50-90-47  
Липецк (4742)52-20-81

Магнитогорск (3519)55-03-13  
Москва (495)268-04-70  
Мурманск (8152)59-64-93  
Набережные Челны (8552)20-53-41  
Нижний Новгород (831)429-08-12  
Новокузнецк (3843)20-46-81  
Ноябрьск (3496)41-32-12  
Новосибирск (383)227-86-73  
Омск (3812)21-46-40  
Орел (4862)44-53-42  
Оренбург (3532)37-68-04  
Пенза (8412)22-31-16  
Петрозаводск (8142)55-98-37  
Псков (8112)59-10-37  
Пермь (342)205-81-47

Ростов-на-Дону (863)308-18-15  
Рязань (4912)46-61-64  
Самара (846)206-03-16  
Санкт-Петербург (812)309-46-40  
Саратов (845)249-38-78  
Севастополь (8692)22-31-93  
Саранск (8342)22-96-24  
Симферополь (3652)67-13-56  
Смоленск (4812)29-41-54  
Сочи (862)225-72-31  
Ставрополь (8652)20-65-13  
Сургут (3462)77-98-35  
Сыктывкар (8212)25-95-17  
Тамбов (4752)50-40-97  
Тверь (4822)63-31-35

Тольятти (8482)63-91-07  
Томск (3822)98-41-53  
Тула (4872)33-79-87  
Тюмень (3452)66-21-18  
Ульяновск (8422)24-23-59  
Улан-Удэ (3012)59-97-51  
Уфа (347)229-48-12  
Хабаровск (4212)92-98-04  
Чебоксары (8352)28-53-07  
Челябинск (351)202-03-61  
Череповец (8202)49-02-64  
Чита (3022)38-34-83  
Якутск (4112)23-90-97  
Ярославль (4852)69-52-93

Россия +7(495)268-04-70

Казахстан +(727)345-47-04

Беларусь +(375)257-127-884

Узбекистан +998(71)205-18-59

Киргизия +996(312)96-26-47

эл.почта: [cgc@nt-rt.ru](mailto:cgc@nt-rt.ru) || сайт: <https://ceramtec.nt-rt.ru>



# Zeramex XT

The ceramic implants that boasts maximum prosthetic flexibility thanks to an unlimited range and digital workflow

# Zeramex XT



# Zeramex XT surgery

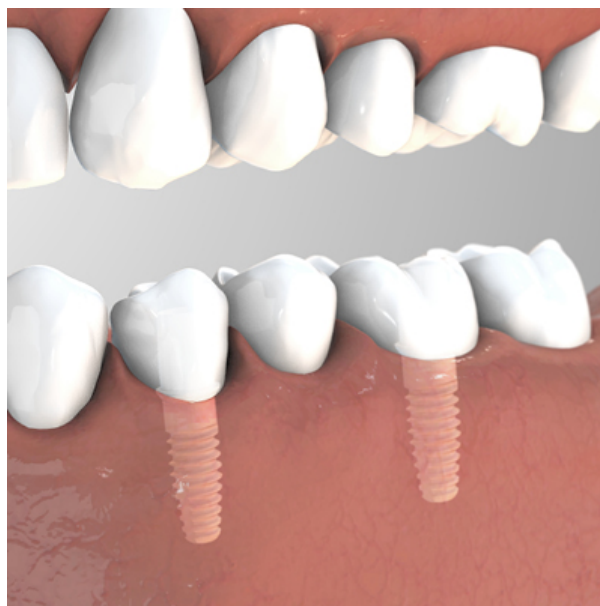
## General



The Zeramex XT dental implant belongs to the family of two-piece and 100% metal-free Zeramex ceramic implants\*. It offers maximum prosthetic flexibility, thanks to reversible screw-in connection and an unlimited range - particularly in the anterior area.

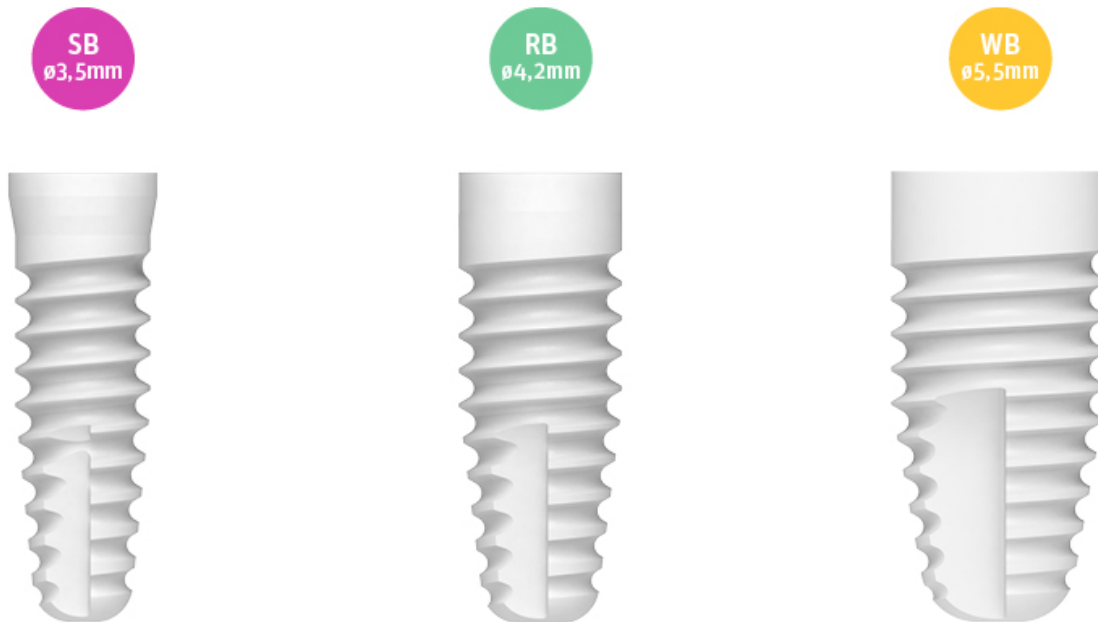


## Implants

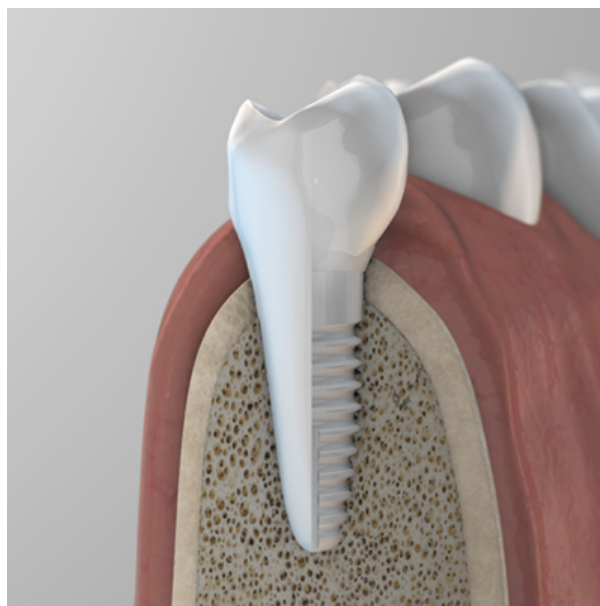


The Zeramex XT ceramic dental implant offers three different platforms (SB / RB / WB) in lengths of 8, 10, 12 and 14 mm and is particularly suitable for anterior restorations, thanks to its small diameter and digital workflow.

The Zeramex XT ceramic implant is placed 1.6 mm supracrestal but can optionally be placed deeper (up to 0.6 mm supracrestal). The cylindrical-conical design of the implant thread was developed to achieve high primary stability. The reservoir for bone grafts at the implant tip simplifies the placement of the implant.



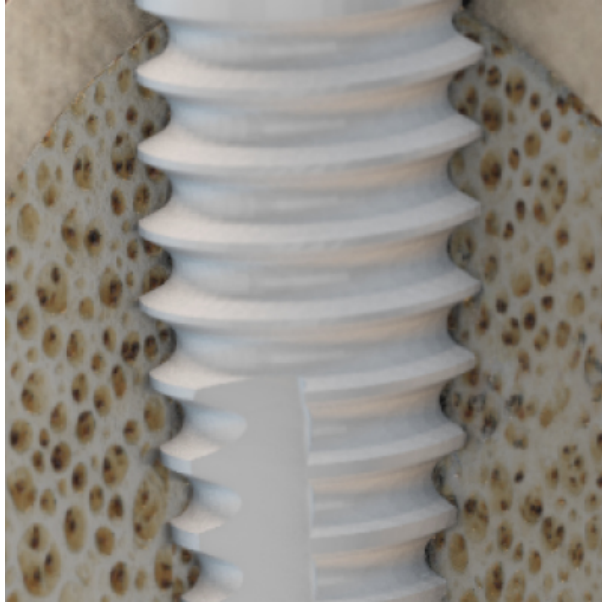
## Manufacturing



The Zeramex XT ceramic implant is manufactured from hard zirconium oxide ATZ blanks manufactured by hot isostatic pressing. No thermal sintering or post-processing takes place after the final shaping of the outer and inner geometry of the dental implant. This ensures that no further changes can occur in the material structure. This manufacturing process is very complex, requires a great deal of experience and expertise and enables a high shaping accuracy and precision in the manufacture of the ceramic implant.

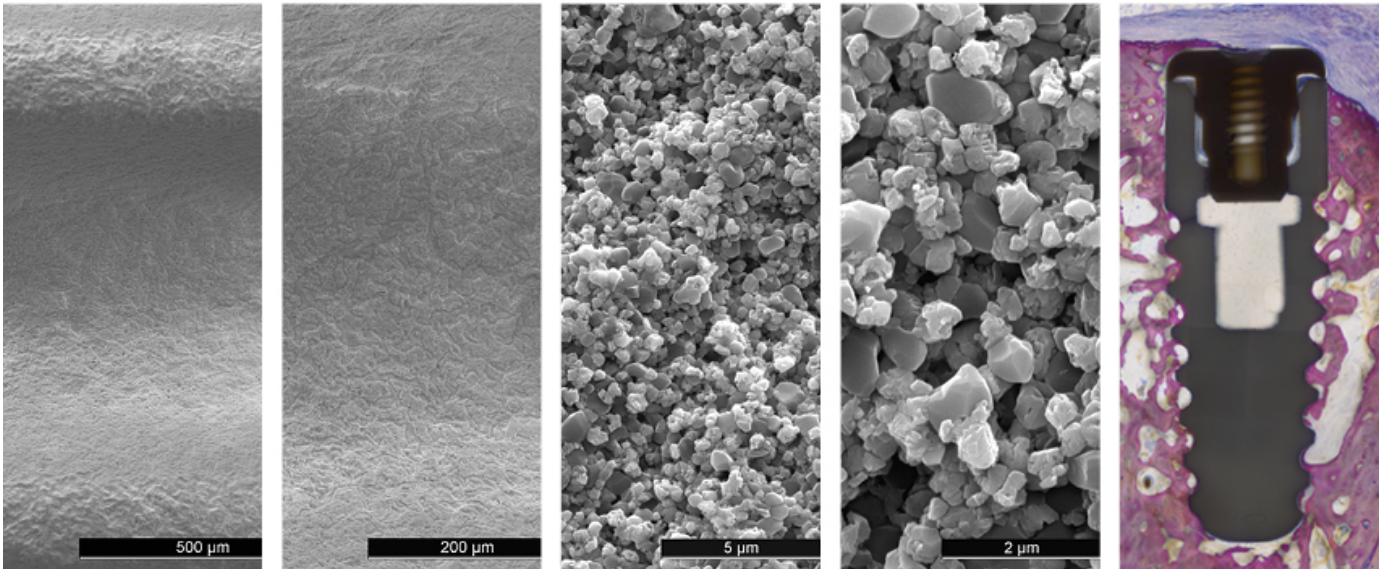
**Do you require any further information regarding the Zeramex XT ceramic implant system?  
Click here for the user instructions:**

## Surface



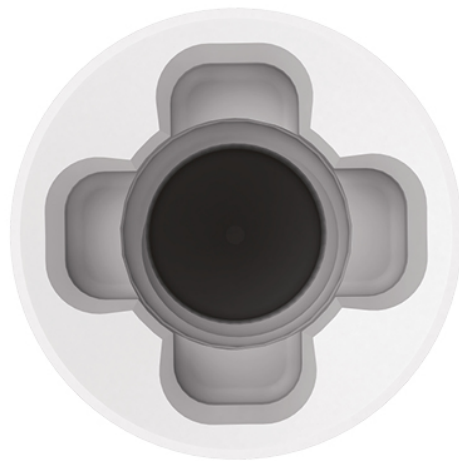
The Zerafil surface is a micro-structured implant surface that enables decisive osseointegration of the dental implants.

The success rate for the Zeramax XT ceramic dental implants used with the Zerafil surface is 98%, and bears witness to the decisive osseointegration thanks to an optimum surface structure. The hydrophilic implant surface Zerafil (surface treatment up to a collar height of 0.6 mm) is sandblasted and etched so that osteoblasts can grow directly up to the dental implant and firm adhesion to the implant surface can be achieved<sup>4</sup>.



## Zeramex XT connection

«Bolt-In-Tube» internal connection



The four cross-shaped retentive elements provide an ideal transmission of torque when inserting the ceramic dental implant and allow the implants to be screwed into the bone without stress peaks. This unique internal connection ensures a precise and prosthetically flexible restoration.

Four tips for even more precision



The special geometry with the four tips enables high precision and fast and easy insertion and alignment of the abutment. All abutments are designed with the four tips, including the Zerabase and 'unengaged' Zerabase X abutments for bridge restorations.

## Vicarbo technology



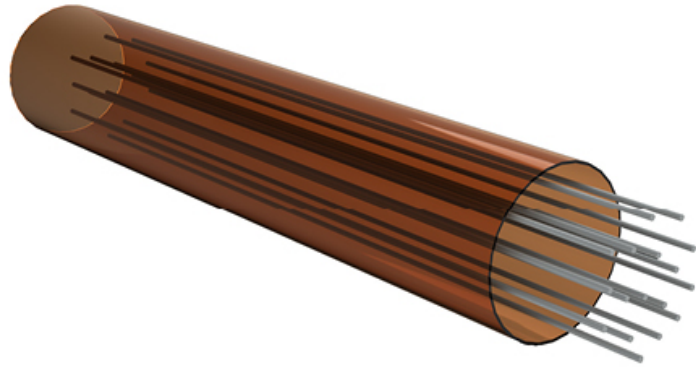


## The core of the connection is the Vicarbo screw.

It works like a bolt, which anchors the abutment in the implant. The extremely hard ceramic is combined with a very stiff, carbon fibre-reinforced high-performance PEEK polymer. Similar to reinforced concrete, the ceramic absorbs the compressive forces, while the Vicarbo screw counteracts tensile forces.



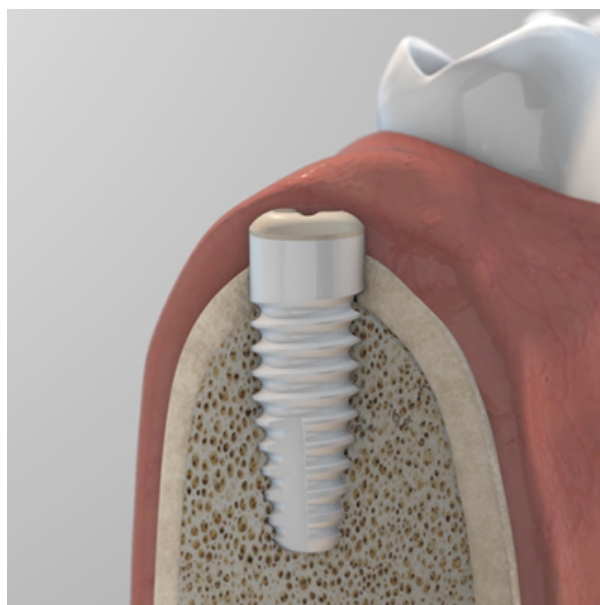
Zeramex XT  
Vicarbo Screw



Carbon fiber reinforced  
high performance PEEK

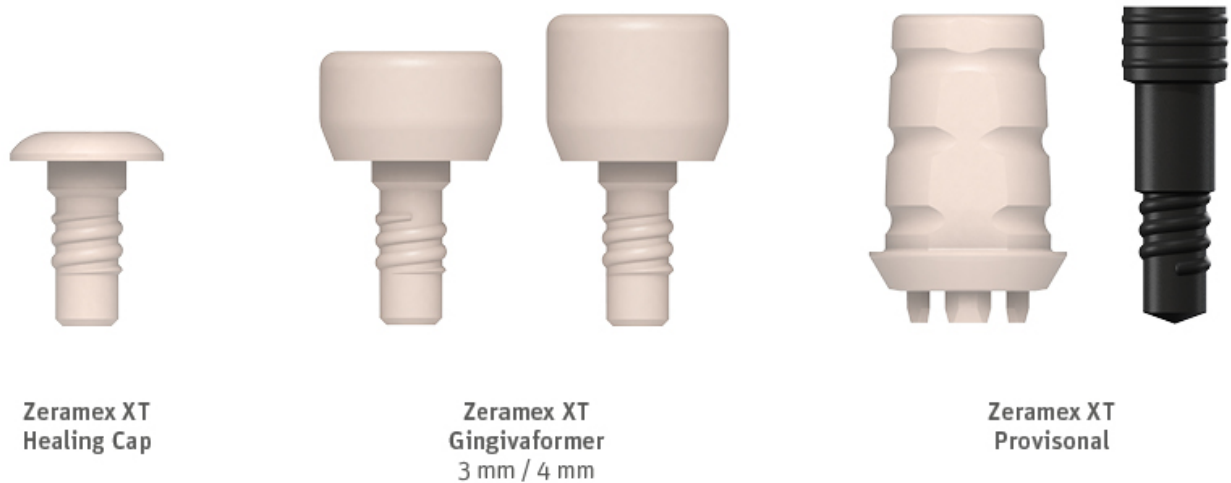
## Zeramex XT prosthetics

Soft Tissue Management

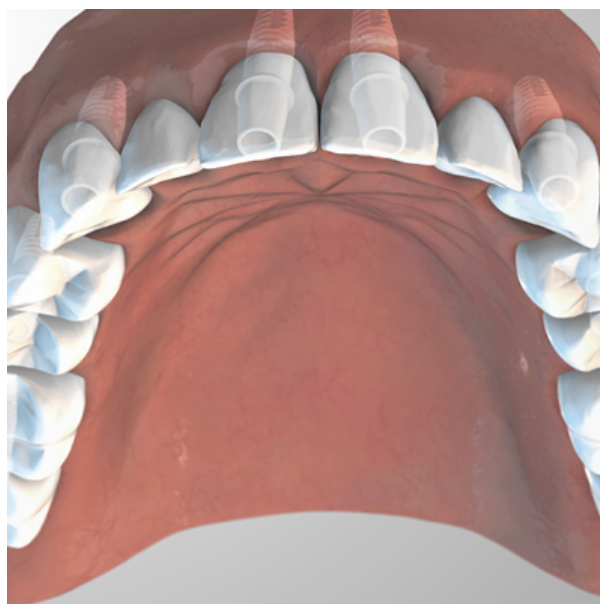


The Zeramex healing cap, gingiva former and temporary abutment help to achieve the desired shape of the peri-implant soft tissue after the healing phase.

The gingiva formers are available in two heights (3 mm/4 mm). The secondary temporary abutment made of PEEK allows individual temporary restoration.



## Restoration - standard



The range of metal-free prosthetics is extensive and satisfies the stringent requirements with regard to aesthetics and functionality. The Zeramex XT ceramic implant, in combination with its various standard abutments, is ideal for nearly every situation.

The standard abutments are available for all three platforms (SB / RB / WB) with different shoulder heights and angles.

The Zeramex XT ceramic implant system is used for the following indications:

- Individual tooth restorations
- Bridge restoration using several ceramic implants
- Bar restoration using several ceramic implants
- Removable restoration in combination with Zeramex Docklocs® abutments
- Telescopic restorations



**Zeramex XT Abutment  
Straight 1 mm**  
*Cemented variant  
Screwed variant*

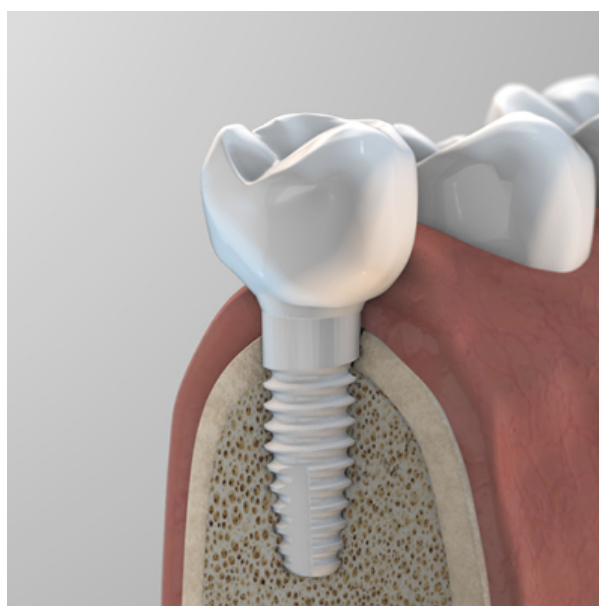


**Zeramex XT Abutment  
Straight 2 mm**  
*Cemented variant  
Screwed variant*



**Zeramex XT Abutment  
Angled 15° 1 mm**  
*Cemented variant  
Screwed variant*

Restoration - adhesive base



Monolithic crowns and bridges can be made of various optimised plastics or zirconium oxide. By contrast, classic all-ceramic crowns and bridges are made of layering or pressed ceramic on a zirconium oxide cap.

Different Zerabase abutments and a digital workflow make it possible to find the correct abutment in every case for an aesthetically demanding, 100% metal-free restoration.

## Zerabase X: The CAD/CAM alternative for laboratory and chairside

- Shorter and more elegant design
- Also enables larger angulations
- Available for (SB / RB / WB)
- Variable adjustment (engaged/unengaged)
- Digital impression possible with Scanbody



**Zeramex XT Abutment  
Zerabase X RB engaged**

*Cemented variant  
Screwed variant*



**Zeramex XT Abutment  
Zerabase X WB unengaged**

*Cemented variant  
Screwed variant*



**Zeramex XT Abutment  
Zerabase RB engaged**

*Cemented variant  
Screwed variant*



**Zeramex XT Abutment  
Zerabase WB unengaged**

*Cemented variant  
Screwed variant*



**Zeramex XT Abutment  
Zerabase X RB engaged**  
*Cemented variant  
Screwed variant*



**Zeramex XT Abutment  
Zerabase X WB unengaged**  
*Cemented variant  
Screwed variant*



**Zeramex XT Abutment  
Zerabase RB engaged**  
*Cemented variant  
Screwed variant*



**Zeramex XT Abutment  
Zerabase WB unengaged**  
*Cemented variant  
Screwed variant*

## Restoration - individual (Zeramex Digital Solutions)



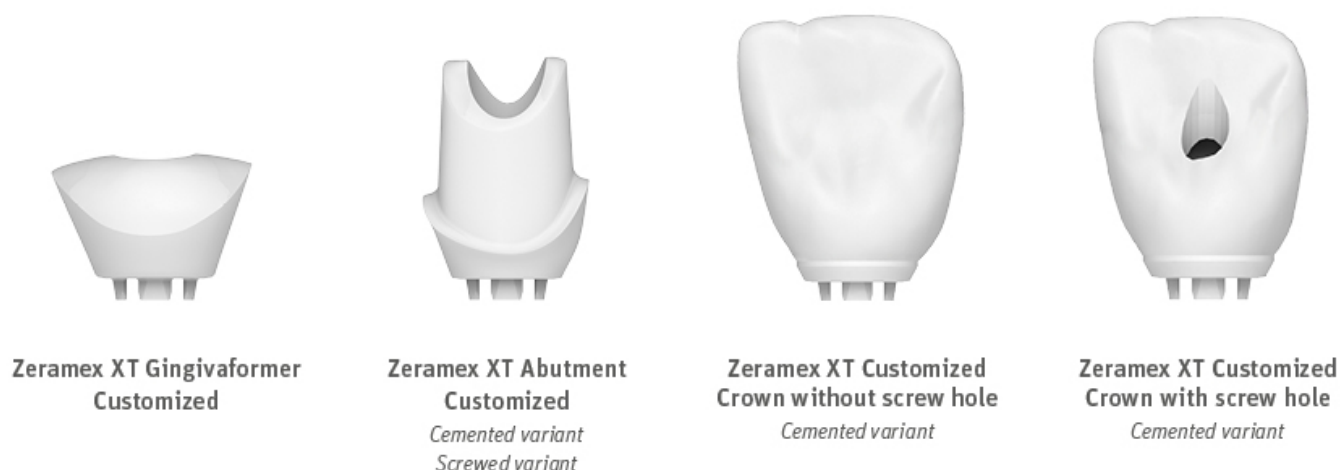
**Standard or Stain & Glaze**

The Zeramex XT ceramic implant offers three different platforms (SB / RB / WB) and is particularly suitable for highly aesthetic anterior restorations, thanks to a digital workflow and individual abutments.

**Individual patient solutions at the click of a mouse**

Would you like to offer your patients highly aesthetic anterior restorations, or do you have narrow spatial conditions to deal with?

- Fully individualised gingiva former and abutments
- Fully individualised monolithic crowns and bridges
- Compatible with exocad and 3shape software
- Tried-and-tested quality, made entirely and precisely of zirconium oxide



### Processing and ordering – [Learn more here](#)

In addition to the production of customised abutments and monolithic crowns with ZerameX XT ceramic implant connections, the digital workflow from ZerameX offers you a service for processing your digital data or for the finishing of semi-finished blank restorations.

- Individual gingiva former and abutments
- Individual crowns in zirconium for Zerabase with or without screw holes
- Monolithic crowns and bridges with ceramic implant connections (Cutback solution available)
- Stain & glaze
- 3D models

**The restorations can be ordered in the various Vita shades and in different translucencies - now also as multilayers.**



**Monolithic Crown  
with implant connection**  
*Screwed variant*



**Monolithic Bridge  
with implant connection**  
*Screwed variant*

## Restoration - Docklocs®



Zeramex Docklocs® is a pre-finished connection system to secure removable restorations based on a snap connection.

Zeramex Docklocs® abutments are available in three sizes (2 mm/3 mm/4 mm) and fit to all platforms (SB/RB/WB).



**Zeramex XT Abutment  
Docklocs® 2 mm**



**Zeramex XT Abutment  
Docklocs® 3 mm**



**Zeramex XT Abutment  
Docklocs® 4 mm**



## По вопросам продаж и поддержки обращайтесь:

Алматы (727)345-47-04  
Ангарск (3955)60-70-56  
Архангельск (8182)63-90-72  
Астрахань (8512)99-46-04  
Барнаул (3852)73-04-60  
Белгород (4722)40-23-64  
Благовещенск (4162)22-76-07  
Брянск (4832)59-03-52  
Владивосток (423)249-28-31  
Владикавказ (8672)28-90-48  
Владимир (4922)49-43-18  
Волгоград (844)278-03-48  
Вологда (8172)26-41-59  
Воронеж (473)204-51-73  
Екатеринбург (343)384-55-89

Иваново (4932)77-34-06  
Ижевск (3412)26-03-58  
Иркутск (395)279-98-46  
Казань (843)206-01-48  
Калининград (4012)72-03-81  
Калуга (4842)92-23-67  
Кемерово (3842)65-04-62  
Киров (8332)68-02-04  
Коломна (4966)23-41-49  
Кострома (4942)77-07-48  
Краснодар (861)203-40-90  
Красноярск (391)204-63-61  
Курск (4712)77-13-04  
Курган (3522)50-90-47  
Липецк (4742)52-20-81

Магнитогорск (3519)55-03-13  
Москва (495)268-04-70  
Мурманск (8152)59-64-93  
Набережные Челны (8552)20-53-41  
Новокузнецк (3843)20-46-81  
Ноябрьск (3496)41-32-12  
Новосибирск (383)227-86-73  
Омск (3812)21-46-40  
Орел (4862)44-53-42  
Оренбург (3532)37-68-04  
Пенза (8412)22-31-16  
Петрозаводск (8142)55-98-37  
Псков (8112)59-10-37  
Пермь (342)205-81-47

Ростов-на-Дону (863)308-18-15  
Рязань (4912)46-61-64  
Самара (846)206-03-16  
Санкт-Петербург (812)309-46-40  
Саратов (845)249-38-78  
Севастополь (8692)22-31-93  
Саранск (8342)22-96-24  
Симферополь (3652)67-13-56  
Смоленск (4812)29-41-54  
Сочи (862)225-72-31  
Ставрополь (8652)20-65-13  
Сургут (3462)77-98-35  
Сыктывкар (8212)25-95-17  
Тамбов (4752)50-40-97  
Тверь (4822)63-31-35

Тольятти (8482)63-91-07  
Томск (3822)98-41-53  
Тула (4872)33-79-87  
Тюмень (3452)66-21-18  
Ульяновск (8422)24-23-59  
Улан-Удэ (3012)59-97-51  
Уфа (347)229-48-12  
Хабаровск (4212)92-98-04  
Чебоксары (8352)28-53-07  
Челябинск (351)202-03-61  
Череповец (8202)49-02-64  
Чита (3022)38-34-83  
Якутск (4112)23-90-97  
Ярославль (4852)69-52-93

**Россия** +7(495)268-04-70

**Казахстан** +(727)345-47-04

**Беларусь** +(375)257-127-884

**Узбекистан** +998(71)205-18-59

**Киргизия** +996(312)96-26-47

эл.почта: [cgc@nt-rt.ru](mailto:cgc@nt-rt.ru) || сайт: <https://ceramtec.nt-rt.ru>