

Керамические резакы, люверсы, струйные пластины

Технические характеристики

По вопросам продаж и поддержки обращайтесь:

Алматы (727)345-47-04
Ангарск (3955)60-70-56
Архангельск (8182)63-90-72
Астрахань (8512)99-46-04
Барнаул (3852)73-04-60
Белгород (4722)40-23-64
Благовещенск (4162)22-76-07
Брянск (4832)59-03-52
Владивосток (423)249-28-31
Владикавказ (8672)28-90-48
Владимир (4922)49-43-18
Волгоград (844)278-03-48
Вологда (8172)26-41-59
Воронеж (473)204-51-73
Екатеринбург (343)384-55-89

Иваново (4932)77-34-06
Ижевск (3412)26-03-58
Иркутск (395)279-98-46
Казань (843)206-01-48
Калининград (4012)72-03-81
Калуга (4842)92-23-67
Кемерово (3842)65-04-62
Киров (8332)68-02-04
Коломна (4966)23-41-49
Кострома (4942)77-07-48
Краснодар (861)203-40-90
Красноярск (391)204-63-61
Курск (4712)77-13-04
Курган (3522)50-90-47
Липецк (4742)52-20-81

Магнитогорск (3519)55-03-13
Москва (495)268-04-70
Мурманск (8152)59-64-93
Набережные Челны (8552)20-53-41
Нижний Новгород (831)429-08-12
Новокузнецк (3843)20-46-81
Ноябрьск (3496)41-32-12
Новосибирск (383)227-86-73
Омск (3812)21-46-40
Орел (4862)44-53-42
Оренбург (3532)37-68-04
Пенза (8412)22-31-16
Петрозаводск (8142)55-98-37
Псков (8112)59-10-37
Пермь (342)205-81-47

Ростов-на-Дону (863)308-18-15
Рязань (4912)46-61-64
Самара (846)206-03-16
Санкт-Петербург (812)309-46-40
Саратов (845)249-38-78
Севастополь (8692)22-31-93
Саранск (8342)22-96-24
Симферополь (3652)67-13-56
Смоленск (4812)29-41-54
Сочи (862)225-72-31
Ставрополь (8652)20-65-13
Сургут (3462)77-98-35
Сыктывкар (8212)25-95-17
Тамбов (4752)50-40-97
Тверь (4822)63-31-35

Тольятти (8482)63-91-07
Томск (3822)98-41-53
Тула (4872)33-79-87
Тюмень (3452)66-21-18
Ульяновск (8422)24-23-59
Улан-Удэ (3012)59-97-51
Уфа (347)229-48-12
Хабаровск (4212)92-98-04
Чебоксары (8352)28-53-07
Челябинск (351)202-03-61
Череповец (8202)49-02-64
Чита (3022)38-34-83
Якутск (4112)23-90-97
Ярославль (4852)69-52-93

Россия +7(495)268-04-70

Казахстан +(727)345-47-04

Беларусь +(375)257-127-884

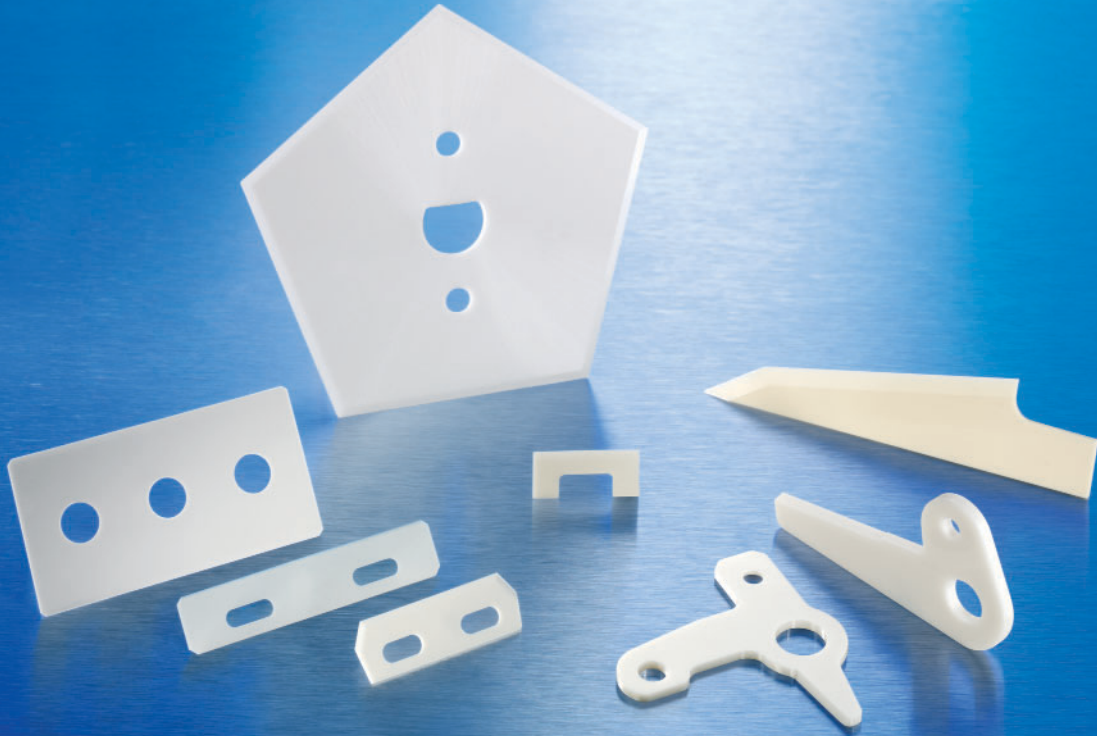
Узбекистан +998(71)205-18-59

Киргизия +996(312)96-26-47

эл.почта: cgc@nt-rt.ru || сайт: <https://ceramtec.nt-rt.ru>

Keramische Schneiden

Ceramic cutters

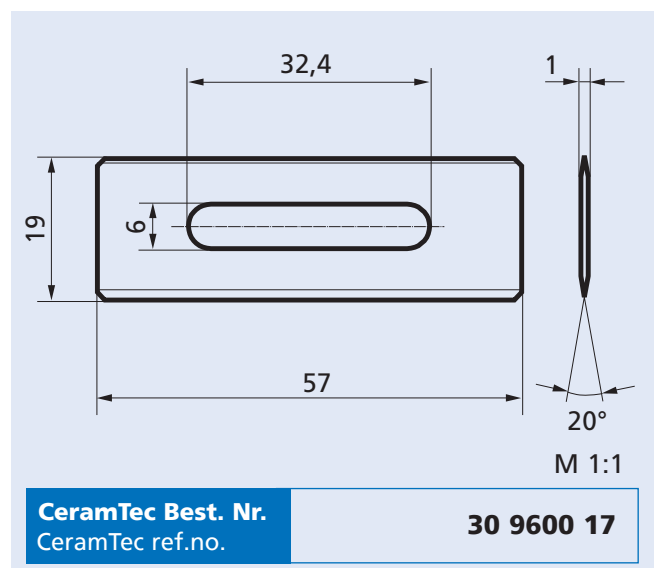
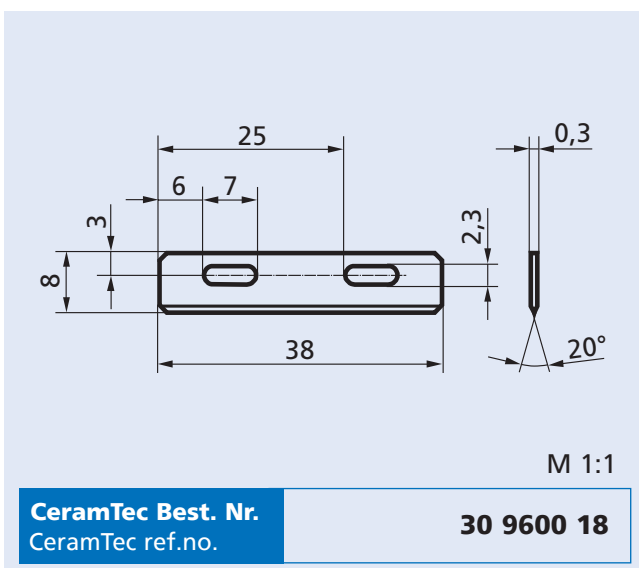
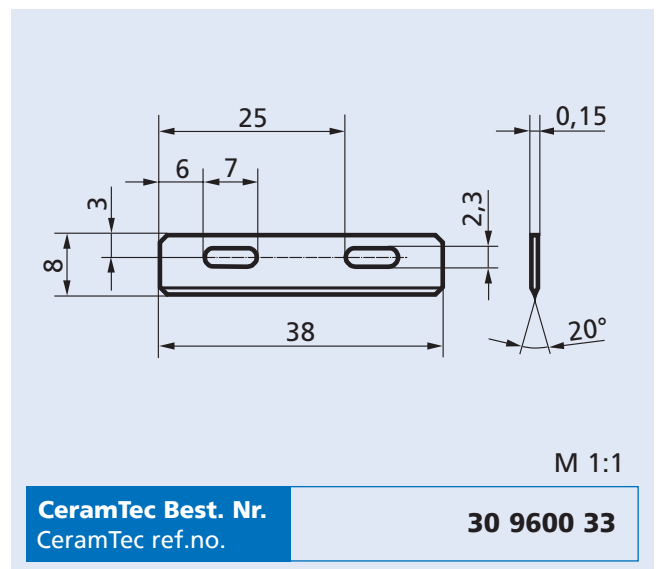
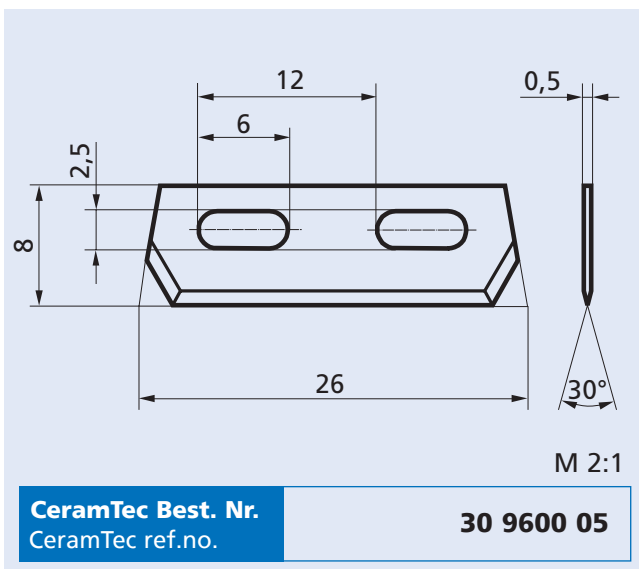
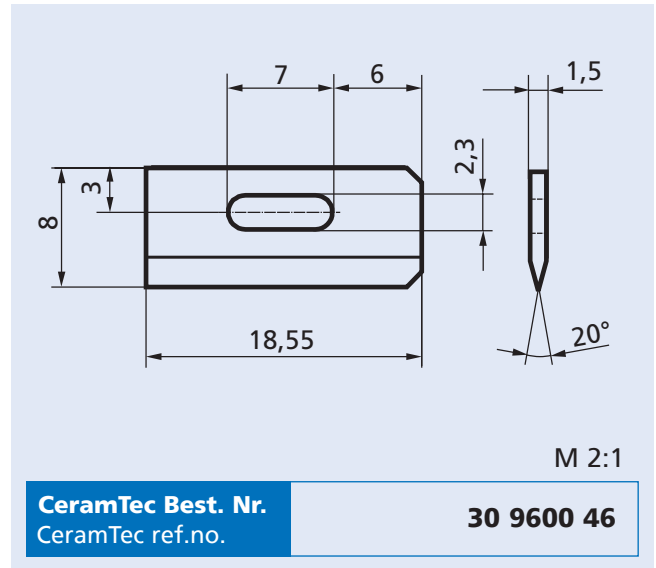
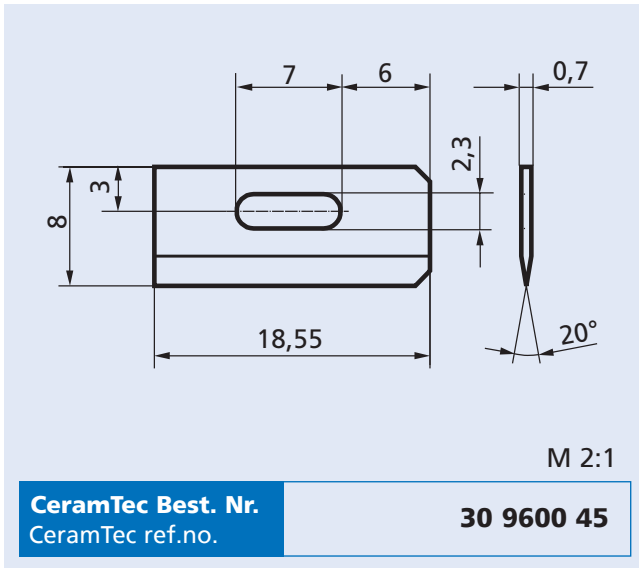


Mechanical Applications Division

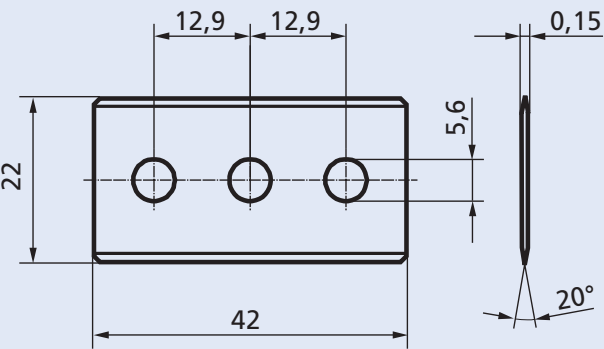
Lieferprogramm

Production program

CeramTec Best. Nr. CeramTec ref.no.	Seite Page	CeramTec Best. Nr. CeramTec ref.no.	Seite Page	CeramTec Best. Nr. CeramTec ref.no.	Seite Page
30 9600 00	7	30 9600 17	3	30 9600 49	8
30 9600 01	10	30 9600 18	3	30 9600 52	10
30 9600 02	10	30 9600 19	8	30 9600 53	10
30 9600 03	5	30 9600 24	8	30 9600 54	4
30 9600 04	5	30 9600 25	7	30 9600 55	11
30 9600 05	3	30 9600 26	7	30 9600 56	11
30 9600 06	5	30 9600 27	10	30 9600 60	6
30 9600 07	5	30 9600 29	4	30 9600 61	6
30 9600 08	9	30 9600 30	4	30 9600 63	7
30 9600 09	9	30 9600 33	3	30 9600 64	9
30 9600 10	9	30 9600 44	6	30 9600 65	9
30 9600 11	9	30 9600 45	3	30 9600 69	7
30 6900 16	7	30 9600 46	3		



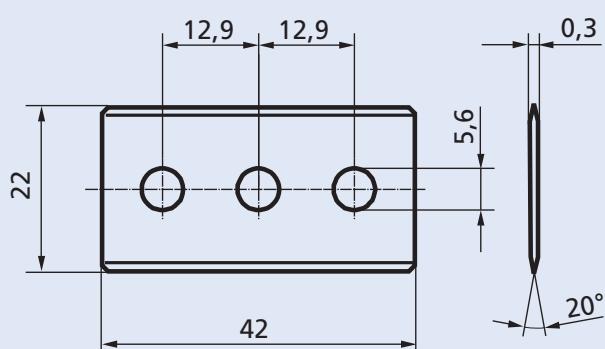
Keramische Schneiden Ceramic cutters



Technical drawing of a ceramic cutter. The main view shows a rectangular body with a height of 22 and a total width of 42. Three circular holes are spaced 12,9 units apart. A detail view shows a cutting edge with a thickness of 0,15 and a 20° angle. The distance from the center of the holes to the cutting edge is 5,6.

M 1:1

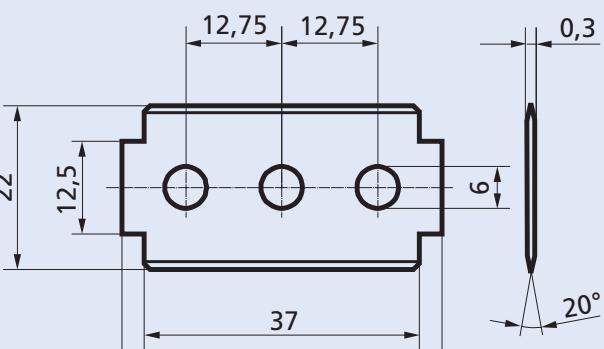
CeramTec Best. Nr. CeramTec ref.no.	30 9600 54
---	-------------------



Technical drawing of a ceramic cutter. The main view shows a rectangular body with a height of 22 and a total width of 42. Three circular holes are spaced 12,9 units apart. A detail view shows a cutting edge with a thickness of 0,3 and a 20° angle. The distance from the center of the holes to the cutting edge is 5,6.

M 1:1

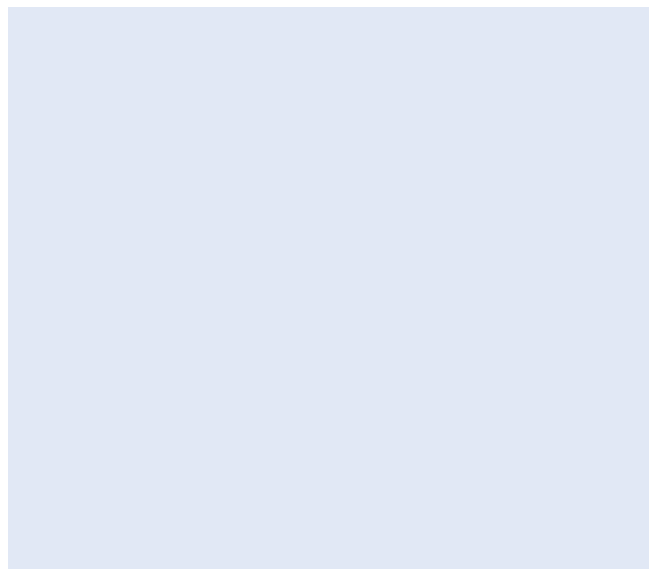
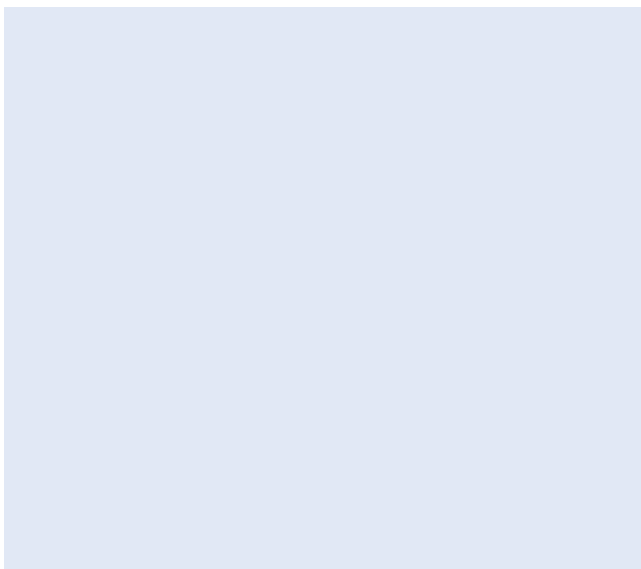
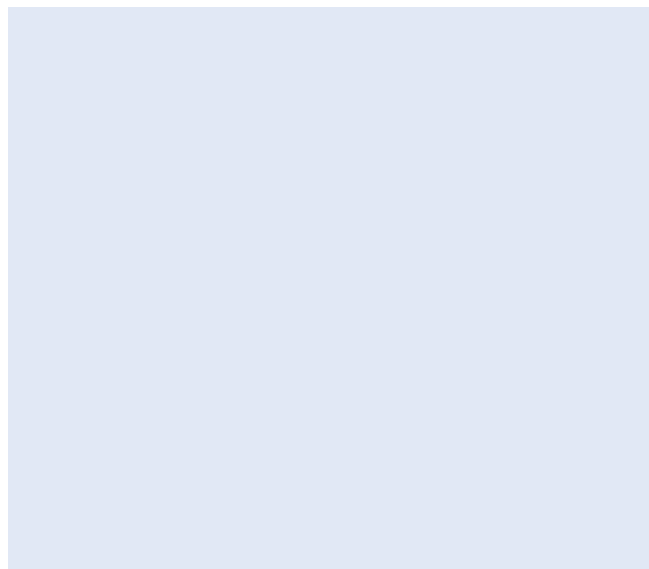
CeramTec Best. Nr. CeramTec ref.no.	30 9600 29
---	-------------------



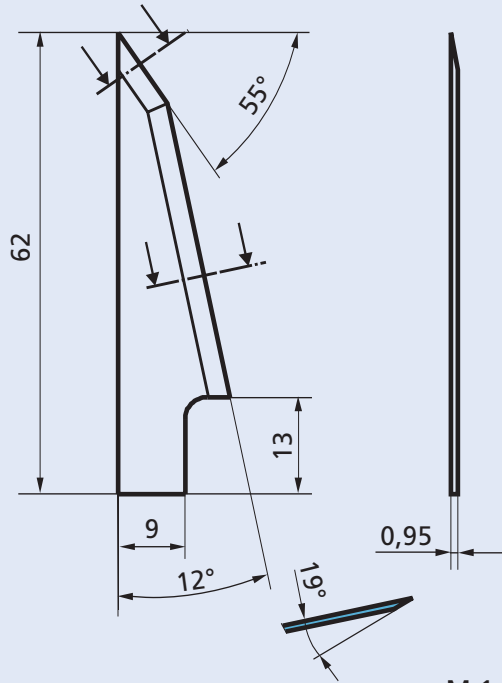
Technical drawing of a ceramic cutter. The main view shows a rectangular body with a height of 22 and a total width of 43. Three circular holes are spaced 12,75 units apart. The distance from the center of the holes to the cutting edge is 6. A detail view shows a cutting edge with a thickness of 0,3 and a 20° angle.

M 1:1

CeramTec Best. Nr. CeramTec ref.no.	30 9600 30
---	-------------------



Messer links • Knife left hand side

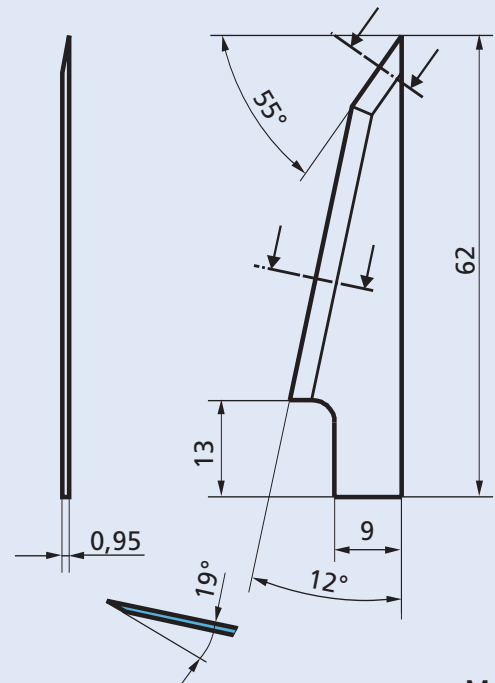


M 1:1

CeramTec Best. Nr.
CeramTec ref.no.

30 9600 04

Messer rechts • Knife right hand side

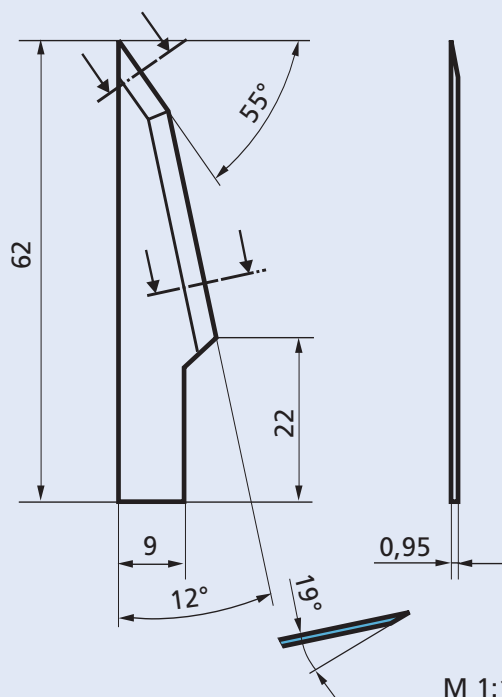


M 1:1

CeramTec Best. Nr.
CeramTec ref.no.

30 9600 03

Messer links • Knife left hand side

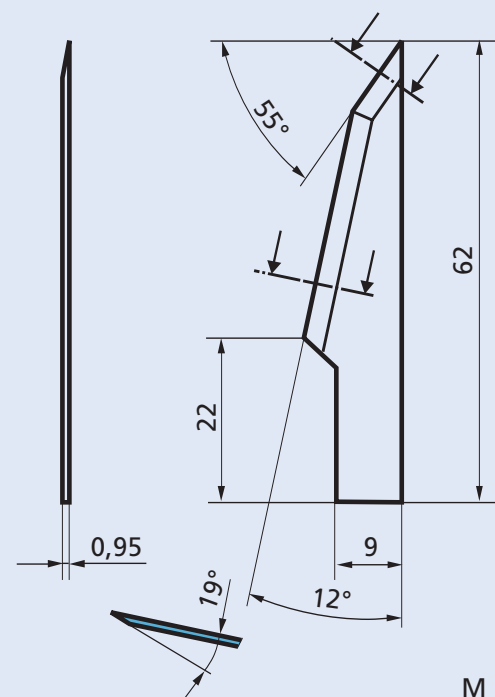


M 1:1

CeramTec Best. Nr.
CeramTec ref.no.

30 9600 07

Messer rechts • Knife right hand side

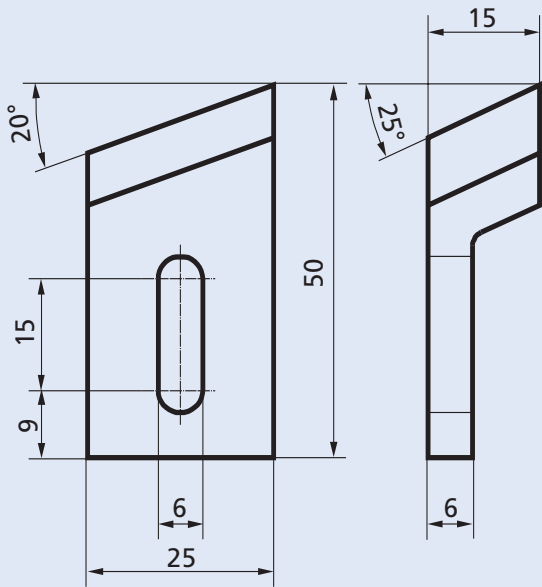


M 1:1

CeramTec Best. Nr.
CeramTec ref.no.

30 9600 06

Obermesser • Top knife

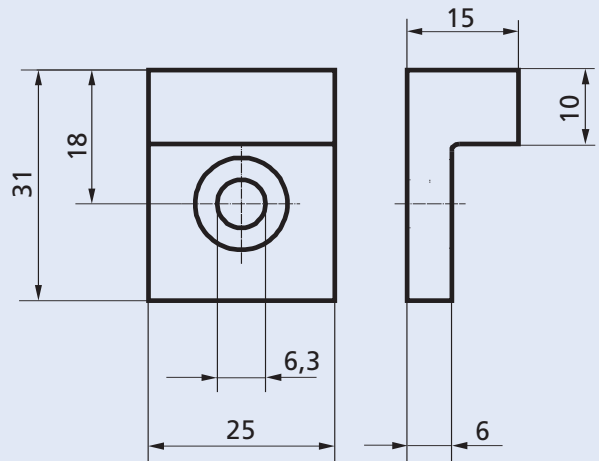


M 1:1

CeramTec Best. Nr.
CeramTec ref.no.

30 9600 61

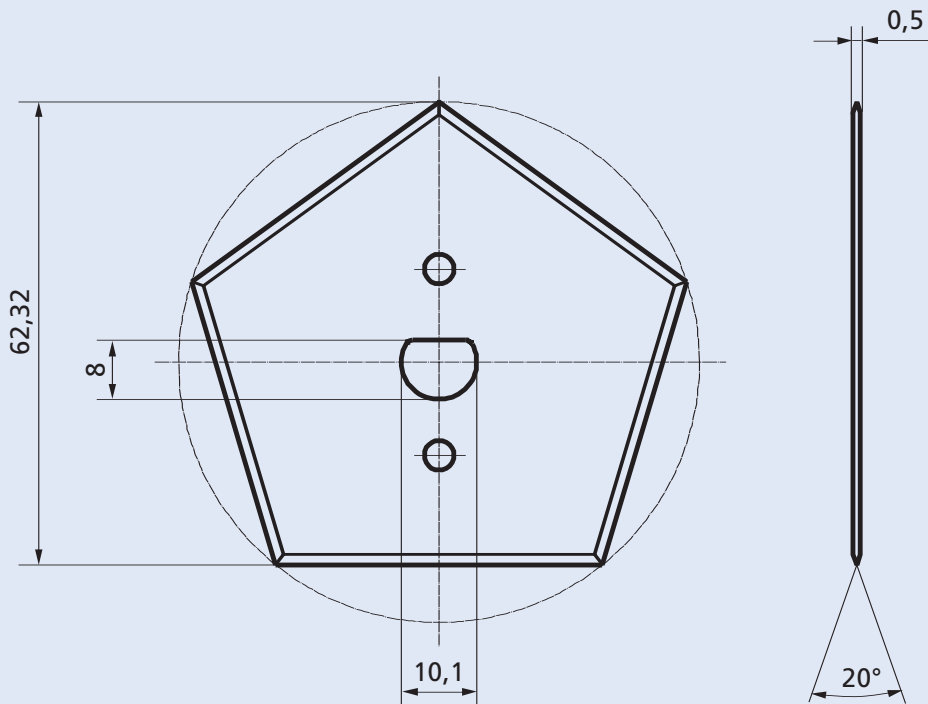
Untermesser • Lower knife



M 1:1

CeramTec Best. Nr.
CeramTec ref.no.

30 9600 60



M 1:1

CeramTec Best. Nr.
CeramTec ref.no.

30 9600 44

M 2:1

CeramTec Best. Nr.
CeramTec ref.no. **30 9600 69**

M 1:1

CeramTec Best. Nr.
CeramTec ref.no. **30 9600 16**

M 2:1

CeramTec Best. Nr.
CeramTec ref.no. **30 9600 63**

M 1:1

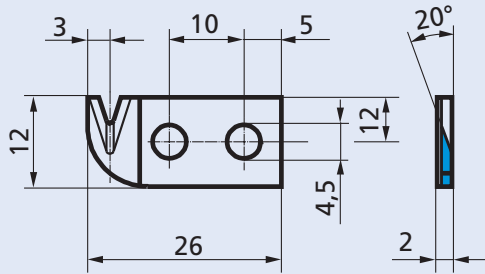
CeramTec Best. Nr.
CeramTec ref.no. **30 9600 25**

M 1:1

CeramTec Best. Nr.
CeramTec ref.no. **30 9600 26**

M 1:1

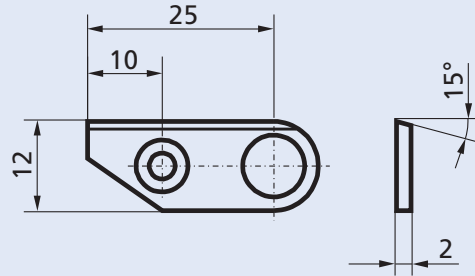
CeramTec Best. Nr.
CeramTec ref.no. **30 9600 00**



M 1:1

CeramTec Best. Nr.
CeramTec ref.no.

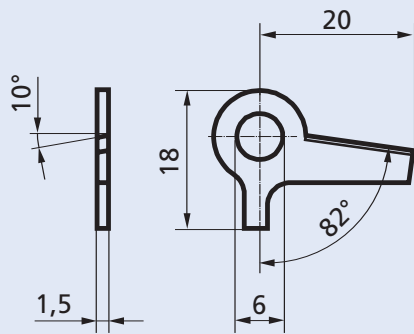
30 9600 24



M 1:1

CeramTec Best. Nr.
CeramTec ref.no.

30 9600 49

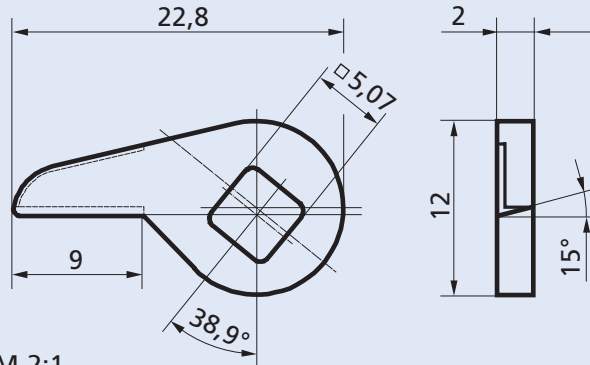


M 1:1

CeramTec Best. Nr.
CeramTec ref.no.

30 9600 19

Obermesser links • Top knife left hand side

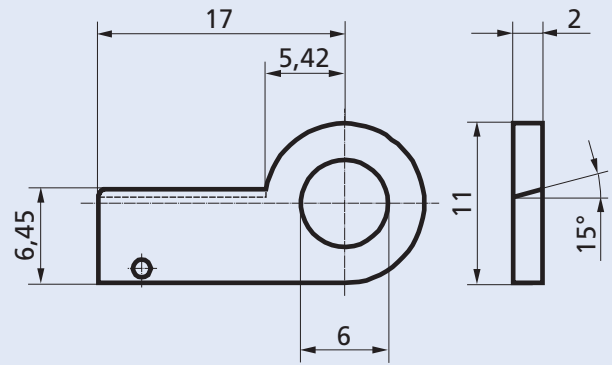


M 2:1

CeramTec Best. Nr.
CeramTec ref.no.

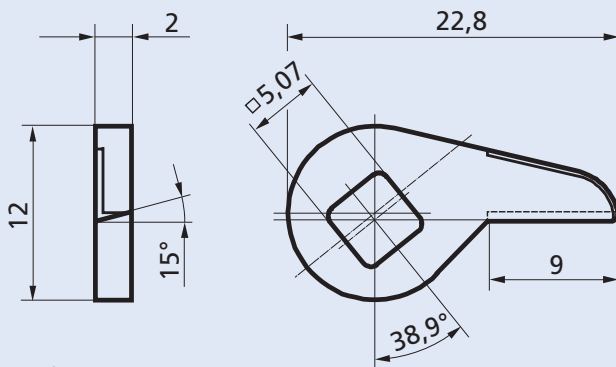
30 9600 08

Untermesser links • Lower knife left hand side



30 9600 10

Obermesser rechts • Top knife right hand side

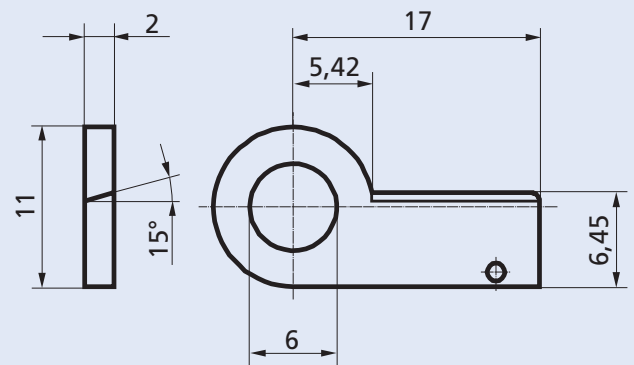


M 2:1

CeramTec Best. Nr.
CeramTec ref.no.

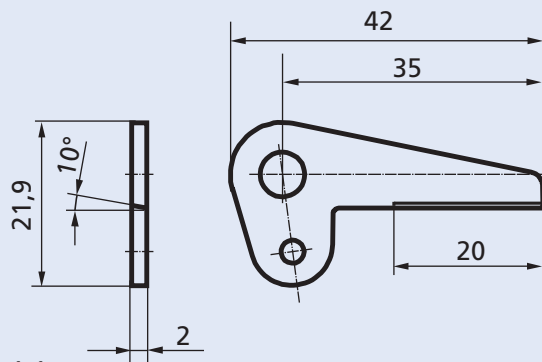
30 9600 09

Untermesser rechts • Lower knife right hand side



30 9600 11

Schere beweglich • Cutter movable

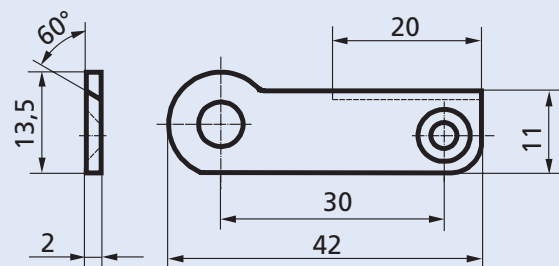


M 1:1

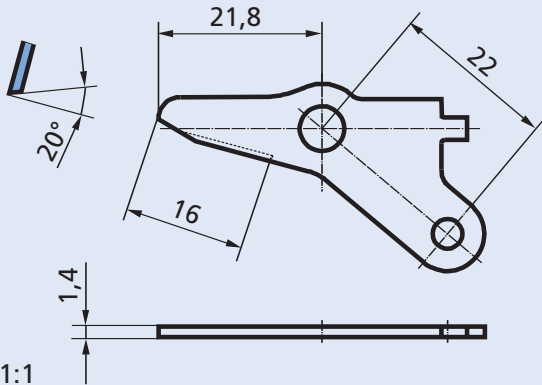
CeramTec Best. Nr.
CeramTec ref.no.

30 9600 65

Schere fest • Cutter fixed

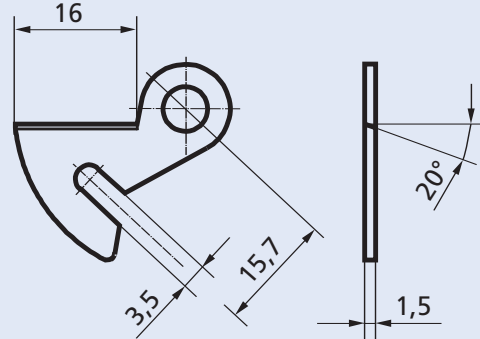
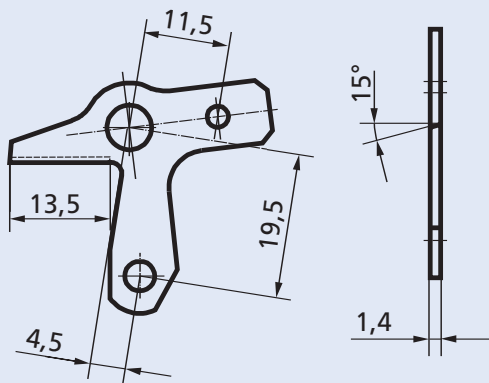


30 9600 64

Schere beweglich • Cutter movable


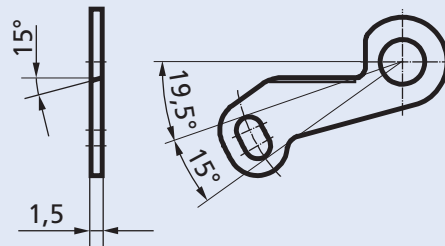
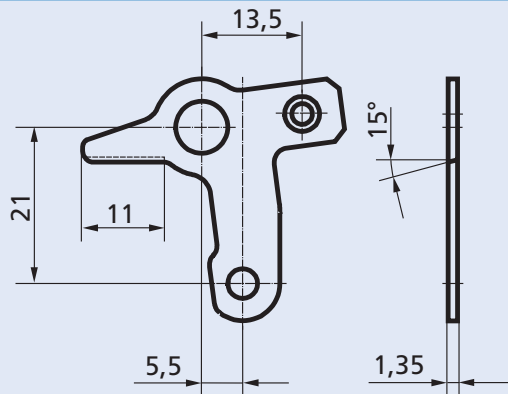
M 1:1

CeramTec Best. Nr.
 CeramTec ref.no.

30 9600 01
Schere fest • Cutter fixed

30 9600 02
Schere beweglich • Cutter movable


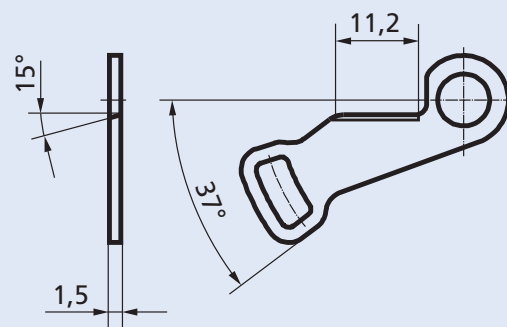
M 1:1

CeramTec Best. Nr.
 CeramTec ref.no.

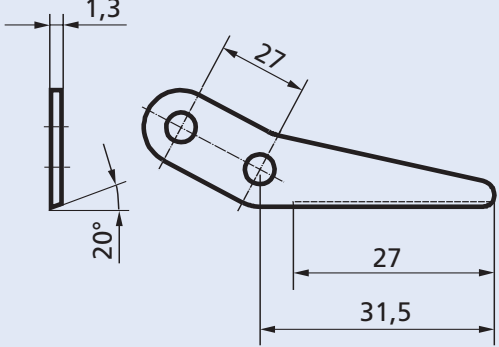
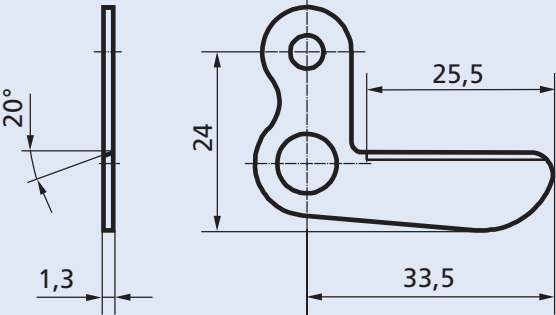
30 9600 28
Schere fest • Cutter fixed

30 9600 27
Schere beweglich • Cutter movable


M 1:1

CeramTec Best. Nr.
 CeramTec ref.no.

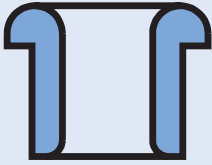
30 9600 53
Schere fest • Cutter fixed

30 9600 52

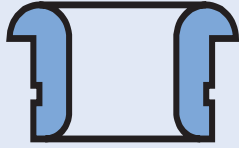
Keramische Schneiden Ceramic cutters

Schere • Cutter	Schere • Cutter	
 <p>M 1:1</p>		
CeramTec Best. Nr. CeramTec ref.no.	30 9600 56	30 9600 55





Ösen Eyelets


Bundösen Straight shouldered eyelets	
	
Seite • Page	4 - 16

Bundösen mit Außenrinne Straight shouldered eyelets with external groove	
	
Seite • Page	17 - 20

Bundösen mit Schlitz Straight shouldered eyelets with slot	
	
Seite • Page	21 - 24

Zylindrische Ösen Cylindrical eyelets	
	
Seite • Page	25 - 32

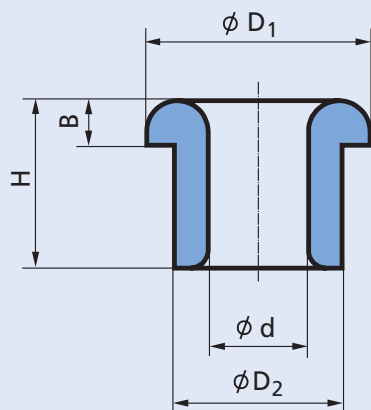
Konische Ösen Tapered eyelets	
	
Seite • Page	33 - 36

Rillenösen Annular eyelets with groove	
	
Seite • Page	37 - 40

Spezialösen Special eyelets		
		

**Bundösen**

Straight shouldered eyelets



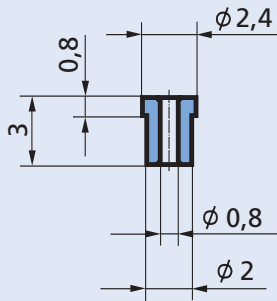
CeramTec Best. Nr. CeramTec ref.no.	Abmessungen (mm) Dimensions					Seite Page
	D ₁	D ₂	d	B	H	
30 3113 03	2,4	2,0	0,8	0,8	3,0	6
30 3113 01	2,5	2,0	0,8	1,5	8,0	6
30 3412 01	3,8	3,0	1,5	1,2	5,2	6
30 0162 00	4,0	3,0	1,5	1,0	3,0	6
30 3531 56	4,0	3,0	1,5	1,0	4,5	6
30 0104 02	4,8	4,0	2,1	1,4	5,0	6
30 3344 00	5,0	4,0	2,0	1,0	6,0	7
30 3531 65	6,0	4,0	0,3	1,0	4,0	7
30 3531 66	6,0	4,0	0,5	1,0	4,0	7
30 3531 67	6,0	4,0	0,75	1,0	4,0	7
30 3531 64	6,0	4,0	0,9	1,0	4,0	7
30 3234 00	6,0	4,6	2,4	1,2	5,1	7
30 0149 02	6,7	4,75	2,2	2,0	8,0	8
30 0105 00	7,0	5,0	2,0	1,8	4,0	8
30 0157 00	8,0	6,3	3,5	1,0	4,5	8
30 0155 00	8,0	6,4	3,5	2,0	10,0	8
30 0102 01	8,0	6,5	3,5	1,5	5,0	8
30 0102 00	8,0	6,5	3,5	1,5	6,5	8
30 0102 02	8,0	6,5	3,5	1,5	8,0	8
30 0121 00	9,0	7,0	2,5	3,0	5,0	9
30 3531 36	10,0	7,0	4,0	1,0	3,2	9
30 0101 00	9,0	7,5	4,5	2,0	7,0	8
30 0101 01	9,0	7,5	4,5	2,0	10,0	8
30 0151 00	9,5	7,5	5,5	2,4	13,5	9

CeramTec Best. Nr. CeramTec ref.no.	Abmessungen (mm) Dimensions					Seite Page
	D ₁	D ₂	d	B	H	
30 3440 00	10,0	7,5	4,5	2,0	7,5	9
30 3486 00	10,0	8,0	4,0	1,0	5,0	9
30 3207 00	10,0	8,0	4,5	2,0	15,0	9
30 3531 63	13,0	9,0	4,0	2,0	7,0	10
30 3248 00	11,8	9,2	5,6	1,8	8,7	10
30 3531 62	11,9	9,5	5,5	2,4	8,2	10
30 3383 00	12,8	9,5	3,8	2,0	7,0	10
30 3414 00	10,8	9,8	6,5	1,0	6,0	10
30 0184 00	12,0	10,0	5,0	4,0	29,0	10
30 3116 00	14,0	10,0	5,0	4,0	20,0	11
30 0141 00	14,0	10,0	5,5	2,0	9,0	11
30 0148 00	14,0	11,0	6,5	2,5	12,0	11
30 3251 00	14,0	11,5	5,5	2,0	5,0	11
30 0123 00	14,0	11,5	5,5	2,0	9,0	11
30 0165 00	15,0	12,0	8,0	3,0	12,5	12
30 3239 03	16,0	12,0	6,0	2,5	8,0	12
30 3239 02	16,0	12,0	6,0	2,5	15,0	12
30 3136 00	16,0	12,0	7,0	3,0	10,5	12
30 3239 04	16,0	12,0	8,0	2,5	8,0	12
30 3257 00	17,0	12,0	7,0	5,0	20,0	12
30 3164 00	17,5	12,0	7,5	4,5	13,7	12
30 3531 22	13,5	12,3	6,5	2,0	7,0	11
30 3531 23	13,5	12,3	8,5	2,0	7,0	11
30 3522 00	18,0	13,0	7,0	3,0	11,0	13
30 3318 02	20,0	13,5	7,5	5,0	10,0	13
30 3522 02	17,8	13,7	7,0	3,0	11,0	13
30 3245 00	23,0	14,9	10,0	5,0	20,0	13
30 3142 00	20,0	15,0	7,0	4,0	16,0	13
30 3377 00	30,0	20,0	15,0	5,0	15,0	14
30 3531 53	28,0	23,0	16,0	3,0	11,0	13
30 3531 21	28,0	24,0	16,0	3,0	11,0	13
30 3531 54	58,0	50,0	15,0	19,0	50,0	14
30 3531 55	72,0	50,5	10,0	23,0	40,0	15
30 3531 58	72,0	50,5	17,0	23,0	103,0	15
30 3531 73	63,5	57,2	50,8	6,4	19,1	14
30 3531 38	95,0	68,0	48,0	19,0	100,0	15

Bundösen

Straight shouldered eyelets

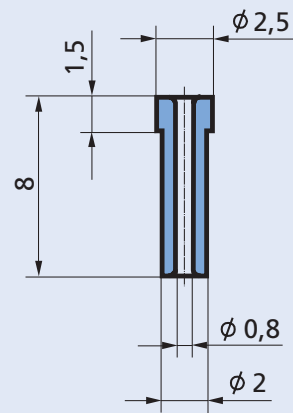
Mechanical Applications Division



M 3:1

CeramTec Best. Nr.
CeramTec ref.no.

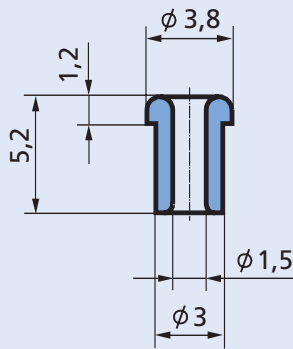
30 3113 03



M 3:1

CeramTec Best. Nr.
CeramTec ref.no.

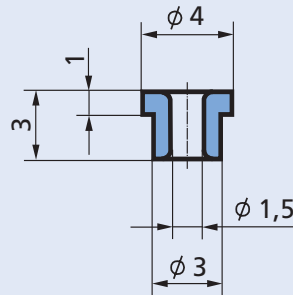
30 3113 01



M 3:1

CeramTec Best. Nr.
CeramTec ref.no.

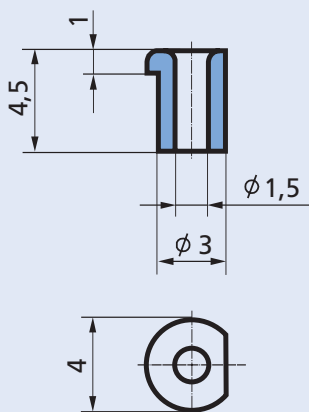
30 3412 01



M 3:1

CeramTec Best. Nr.
CeramTec ref.no.

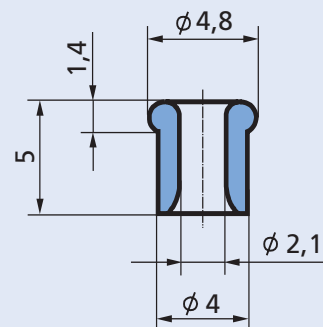
30 0162 00



M 3:1

CeramTec Best. Nr.
CeramTec ref.no.

30 3531 56



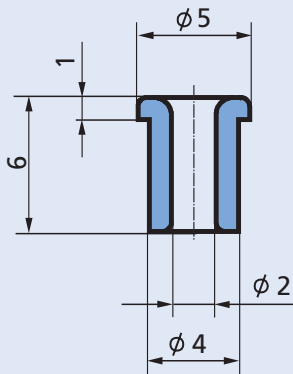
M 3:1

CeramTec Best. Nr.
CeramTec ref.no.

30 0104 02

Bundösen

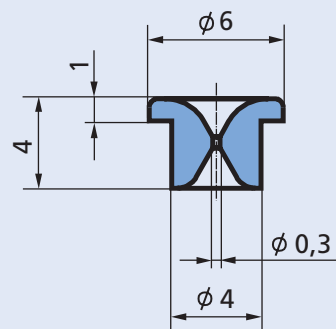
Straight shouldered eyelets



M 3:1

CeramTec Best. Nr.
CeramTec ref.no.

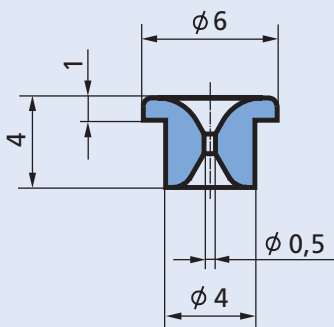
30 3344 00



M 3:1

CeramTec Best. Nr.
CeramTec ref.no.

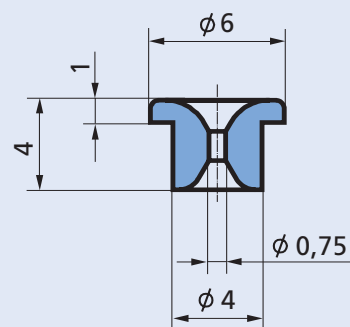
30 3531 65



M 3:1

CeramTec Best. Nr.
CeramTec ref.no.

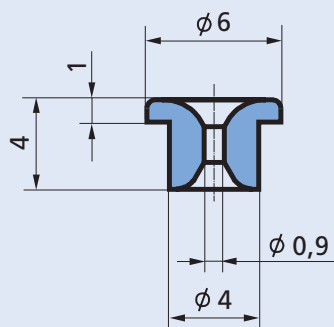
30 3531 66



M 3:1

CeramTec Best. Nr.
CeramTec ref.no.

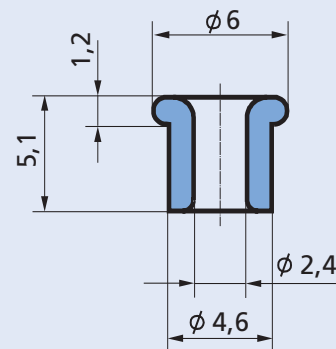
30 3531 67



M 3:1

CeramTec Best. Nr.
CeramTec ref.no.

30 3531 64



M 3:1

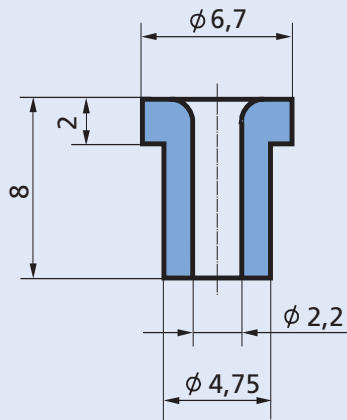
CeramTec Best. Nr.
CeramTec ref.no.

30 3234 00

Bundösen

Straight shouldered eyelets

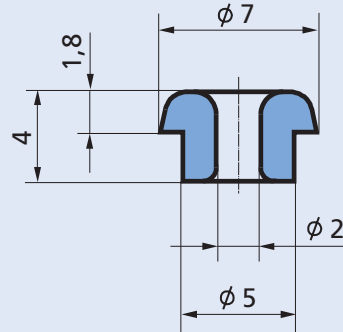
Mechanical Applications Division



M 3:1

CeramTec Best. Nr.
CeramTec ref.no.

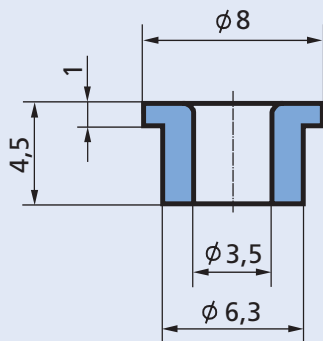
30 0149 02



M 3:1

CeramTec Best. Nr.
CeramTec ref.no.

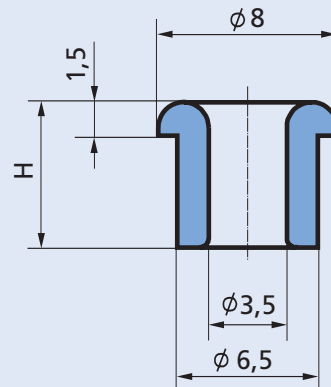
30 0105 00



M 3:1

CeramTec Best. Nr.
CeramTec ref.no.

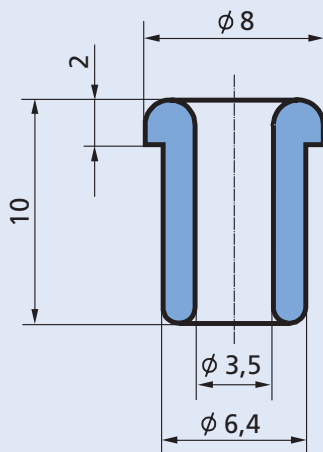
30 0157 00



M 3:1

CeramTec Best. Nr.
CeramTec ref.no.

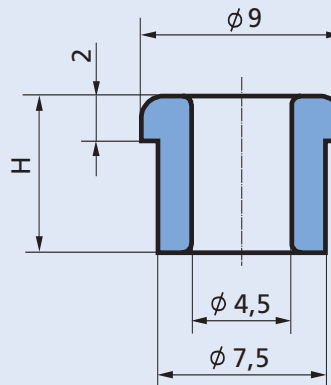
H = 5,0	30 0102 01
H = 6,5	30 0102 00
H = 8,0	30 0102 02



M 3:1

CeramTec Best. Nr.
CeramTec ref.no.

30 0155 00



M 3:1

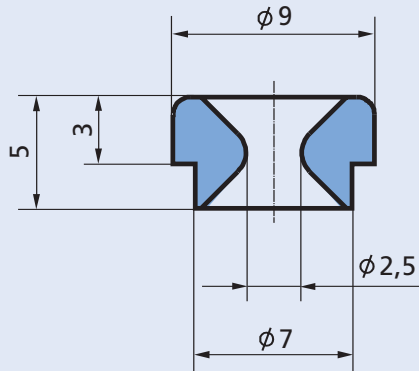
CeramTec Best. Nr.
CeramTec ref.no.

H = 7	30 0101 00
H = 10	30 0101 01

Bundösen

Straight shouldered eyelets

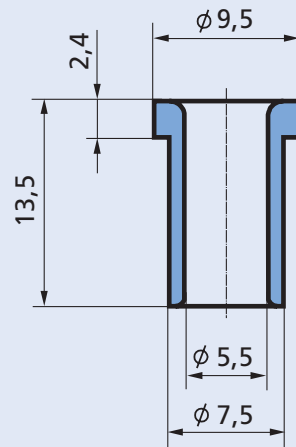
Mechanical Applications Division



M 3:1

CeramTec Best. Nr.
CeramTec ref.no.

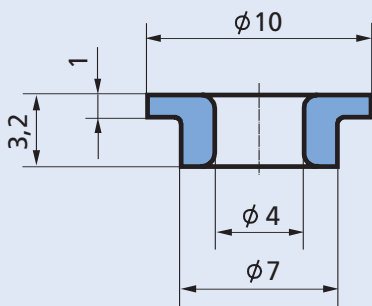
30 0121 00



M 3:1

CeramTec Best. Nr.
CeramTec ref.no.

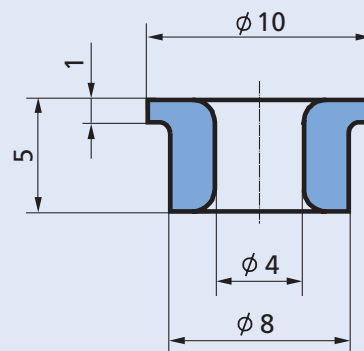
30 0151 00



M 3:1

CeramTec Best. Nr.
CeramTec ref.no.

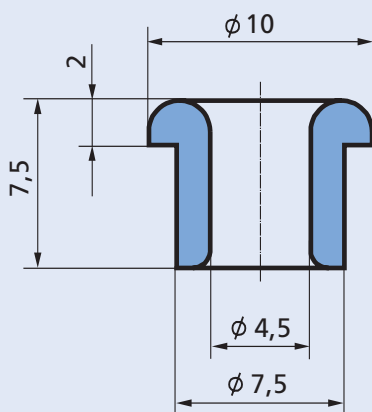
30 3531 36



M 3:1

CeramTec Best. Nr.
CeramTec ref.no.

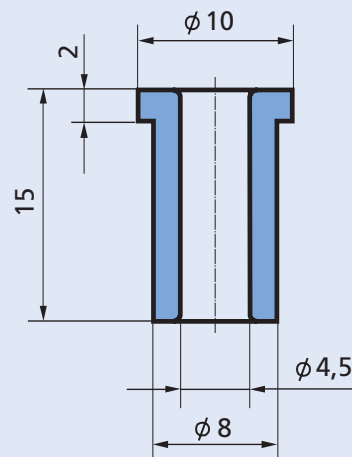
30 3486 00



M 3:1

CeramTec Best. Nr.
CeramTec ref.no.

30 3440 00



M 2:1

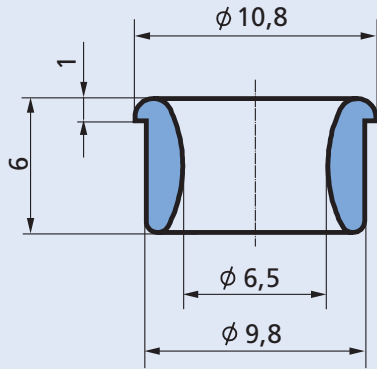
CeramTec Best. Nr.
CeramTec ref.no.

30 3207 00

Bundösen

Straight shouldered eyelets

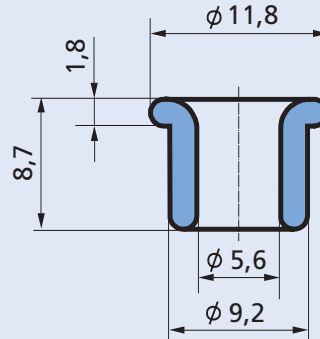
Mechanical Applications Division



M 3:1

CeramTec Best. Nr.
CeramTec ref.no.

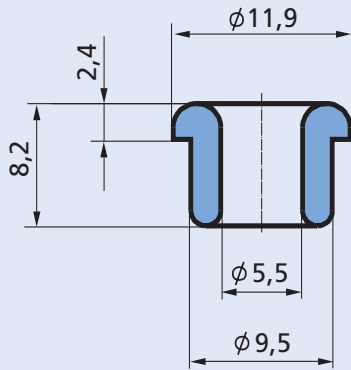
30 3414 00



M 2:1

CeramTec Best. Nr.
CeramTec ref.no.

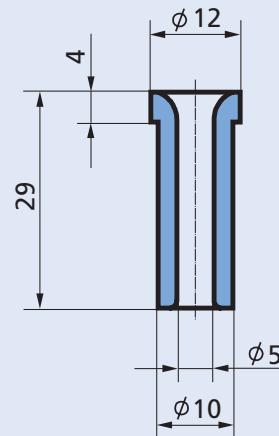
30 3248 00



M 2:1

CeramTec Best. Nr.
CeramTec ref.no.

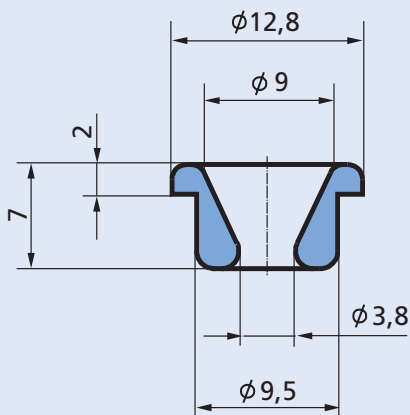
30 3531 62



M 1:1

CeramTec Best. Nr.
CeramTec ref.no.

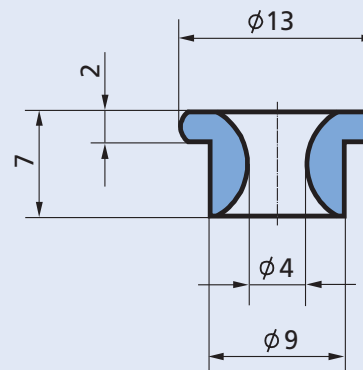
30 0184 00



M 2:1

CeramTec Best. Nr.
CeramTec ref.no.

30 3383 00



M 2:1

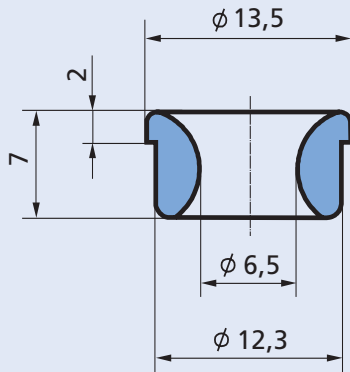
CeramTec Best. Nr.
CeramTec ref.no.

30 3531 63

Bundösen

Straight shouldered eyelets

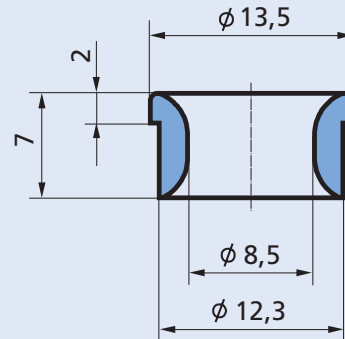
Mechanical Applications Division



M 2:1

CeramTec Best. Nr.
CeramTec ref.no.

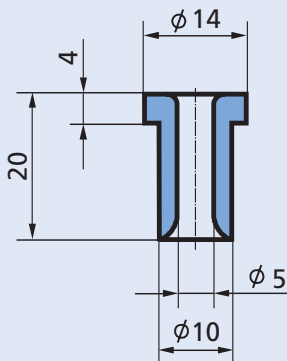
30 3531 22



M 2:1

CeramTec Best. Nr.
CeramTec ref.no.

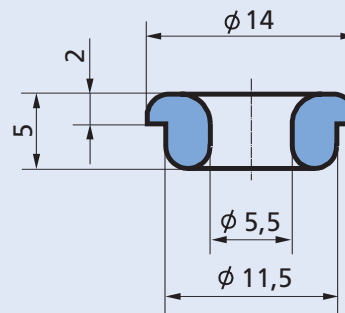
30 3531 23



M 1:1

CeramTec Best. Nr.
CeramTec ref.no.

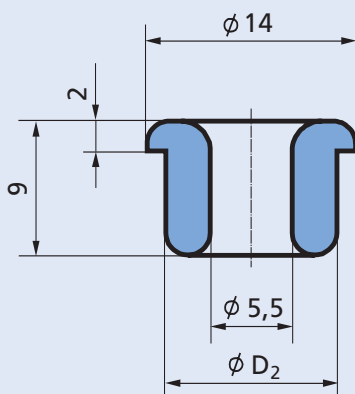
30 3116 00



M 2:1

CeramTec Best. Nr.
CeramTec ref.no.

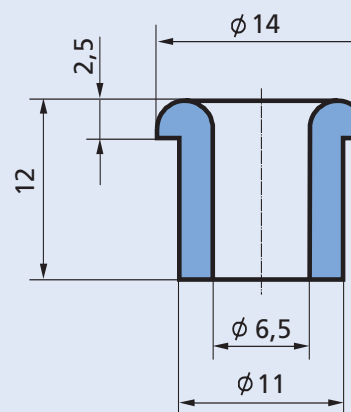
30 3251 00



M 2:1

CeramTec Best. Nr.
CeramTec ref.no.

D₂ = 10,0 30 0141 00
D₂ = 11,5 30 0123 00



M 2:1

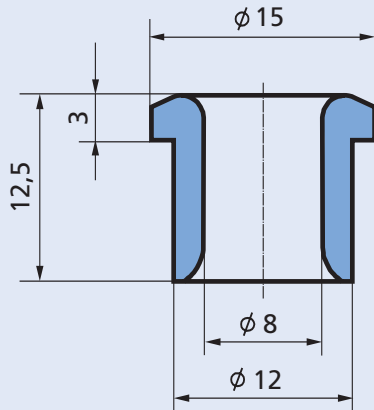
CeramTec Best. Nr.
CeramTec ref.no.

30 0148 00

Bundösen

Straight shouldered eyelets

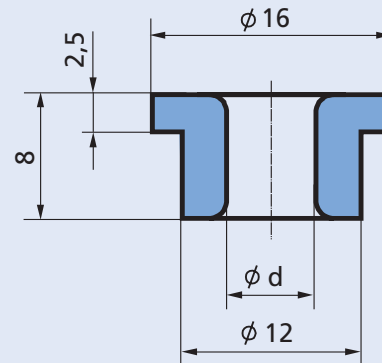
Mechanical Applications Division



M 2:1

CeramTec Best. Nr.
CeramTec ref.no.

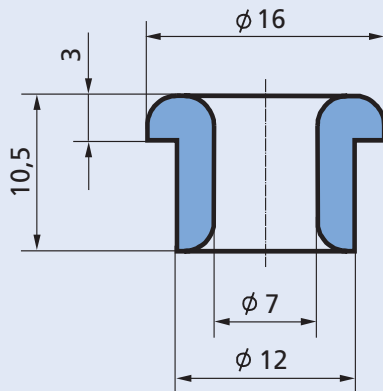
30 0165 00



M 2:1

CeramTec Best. Nr.
CeramTec ref.no.

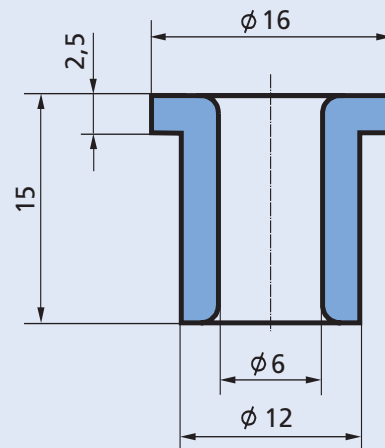
d = 6,0 30 3239 03
d = 8,0 30 3239 04



M 2:1

CeramTec Best. Nr.
CeramTec ref.no.

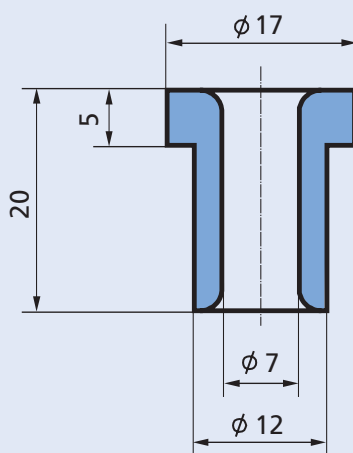
30 3136 00



M 2:1

CeramTec Best. Nr.
CeramTec ref.no.

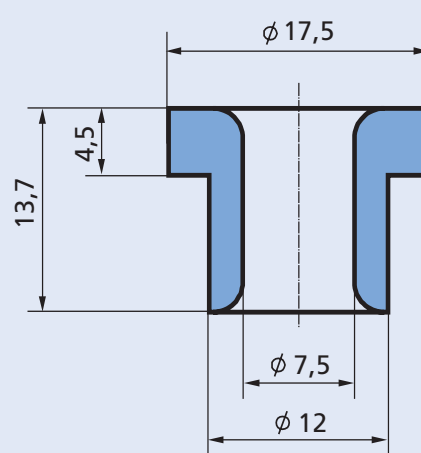
30 3239 02



M 2:1

CeramTec Best. Nr.
CeramTec ref.no.

30 3257 00



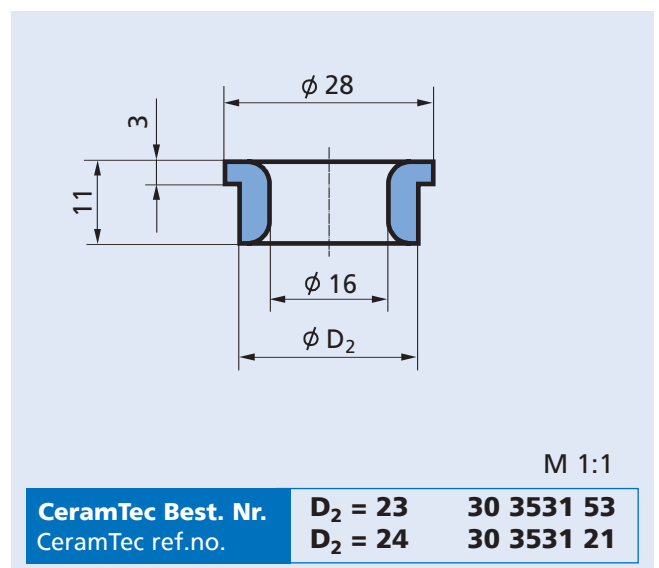
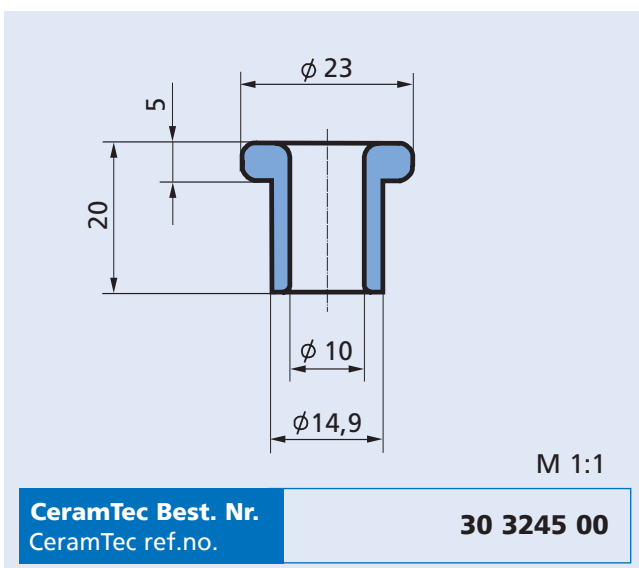
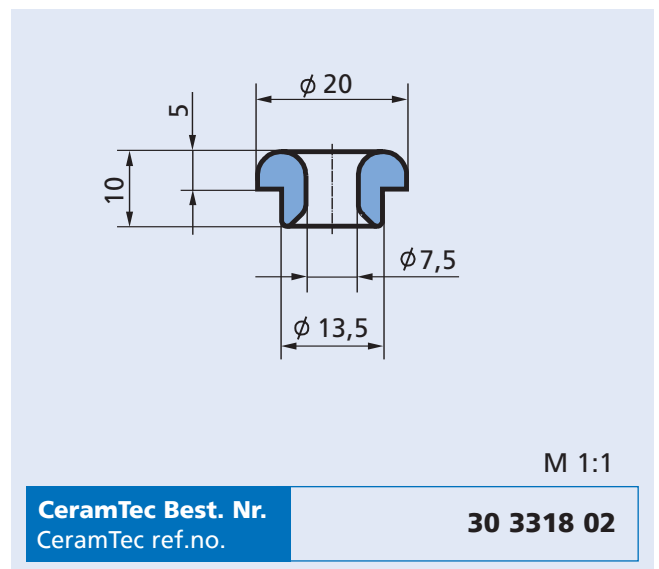
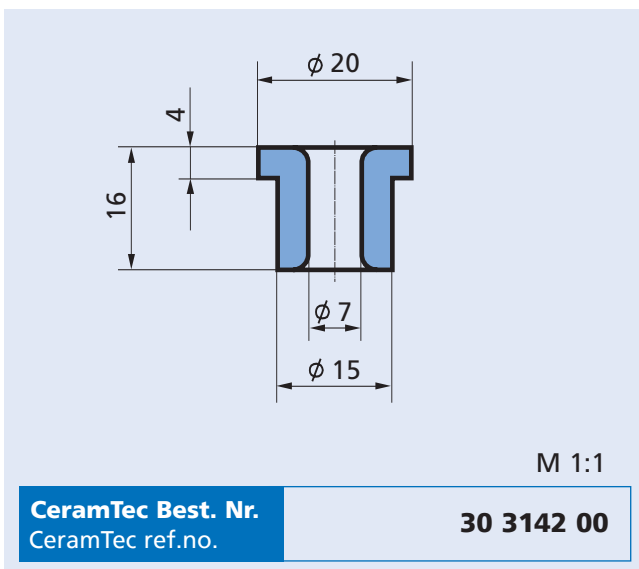
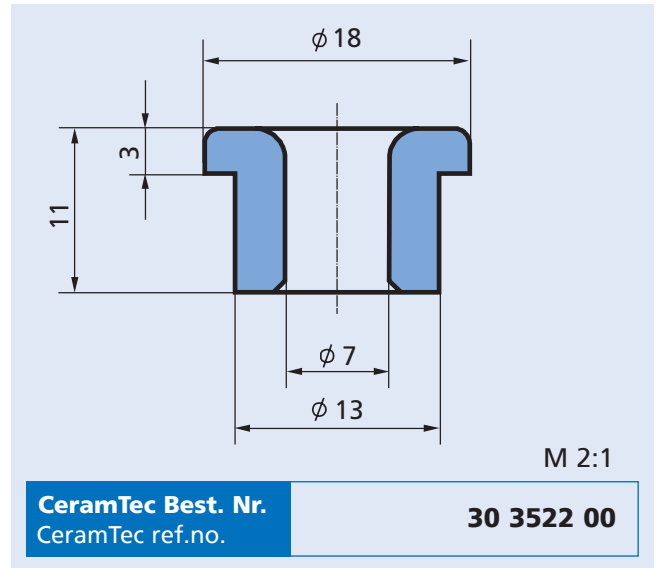
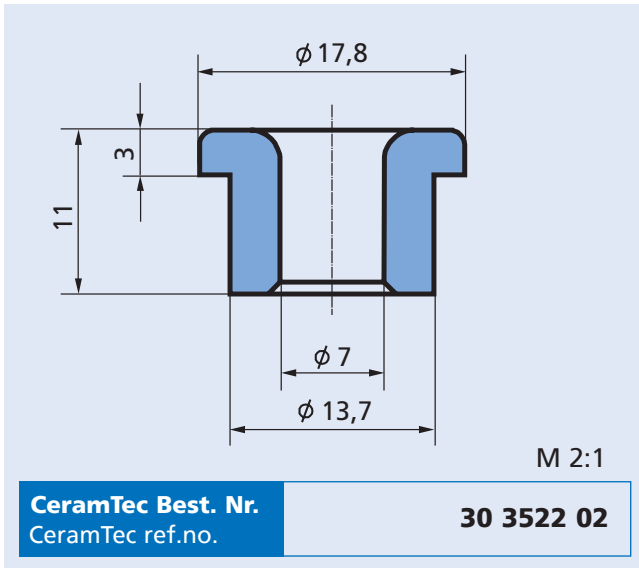
M 2:1

CeramTec Best. Nr.
CeramTec ref.no.

30 3164 00

Bundösen

Straight shouldered eyelets

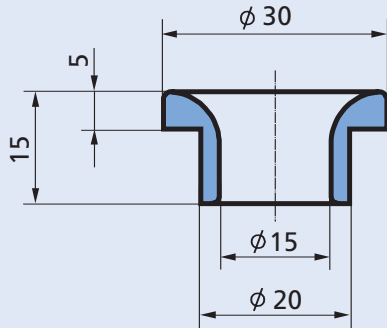


Bundösen
Straight shouldered eyelets

Bundösen

Straight shouldered eyelets

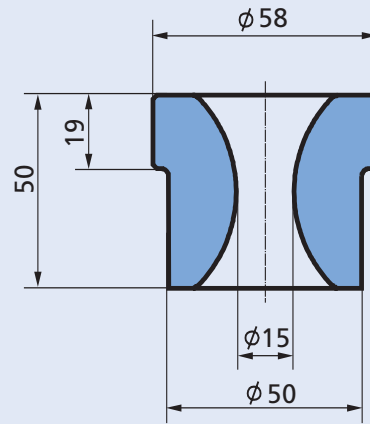
Mechanical Applications Division



M 1:1

CeramTec Best. Nr.
CeramTec ref.no.

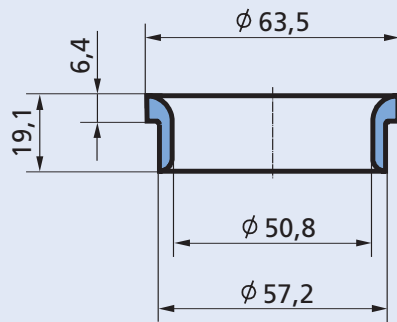
30 3377 00



M 1:2

CeramTec Best. Nr.
CeramTec ref.no.

30 3531 54



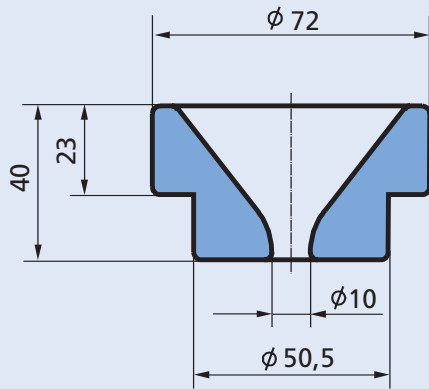
M 1:2

CeramTec Best. Nr.
CeramTec ref.no.

30 3531 73

Bundösen

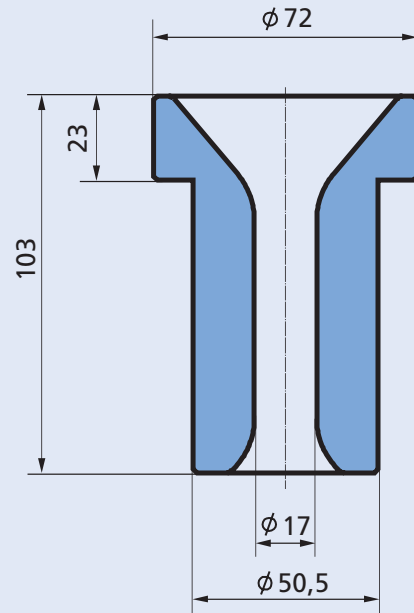
Straight shouldered eyelets



M 1:2

CeramTec Best. Nr.
CeramTec ref.no.

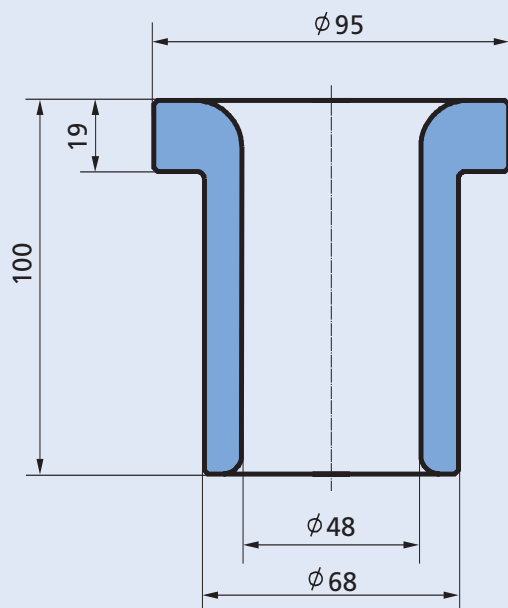
30 3531 55



M 1:2

CeramTec Best. Nr.
CeramTec ref.no.

30 3531 58

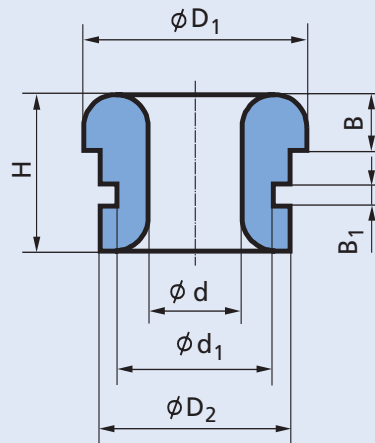


M 1:2

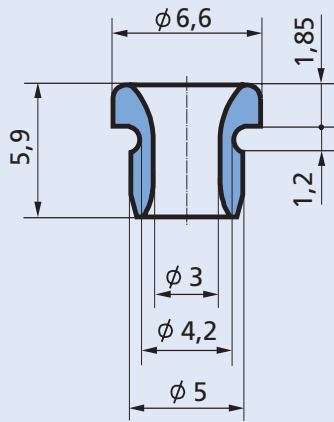
CeramTec Best. Nr.
CeramTec ref.no.

30 3531 38

Bundösen mit Außenrille
Straight shouldered eyelets with external groove



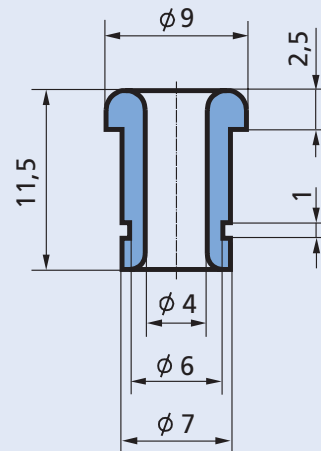
CeramTec Best. Nr. CeramTec ref.no.	Abmessungen (mm) Dimensions							Seite Page
	D ₁	D ₂	d	B	d ₁	B ₁	H	
30 3531 61	6,6	5,0	3,0	1,85	4,2	1,2	5,9	18
30 3237 00	9,0	7,0	4,0	2,5	6,0	1,0	11,5	18
30 0108 02	10,0	8,5	4,2	1,5	7,0	1,0	7,0	18
30 3384 00	12,7	9,6	4,8	1,7	8,0	1,0	9,0	18
30 3531 32	12,0	10,0	1,0	2,0	7,7	1,5	7,0	18
30 3531 57	12,0	10,0	2,0	2,0	7,6	1,5	7,0	18
30 3240 00	15,5	11,5	6,5	2,5	9,5	2,0	10,0	19
30 0189 00	18,0	11,5	4,8	4,0	10,0	1,5	32,0	19
30 0152 00	19,0	13,0	6,0	5,0	12,0	2,0	10,0	19
30 3332 00	19,0	15,0	9,0	2,5	14,0	1,3	10,0	19
30 3531 33	20,0	15,0	9,0	3,0	12,0	1,5	13,5	19
30 3170 00	32,0	23,0	12,0	3,0	21,0	1,3	15,0	19
30 3381 00	35,0	30,0	20,0	4,0	28,6	1,5	12,0	20
30 3381 01	40,0	30,0	20,0	5,0	26,0	4,2	21,0	20
30 3531 26	57,0	50,3	38,2	6,0	46,9	2,1	19,0	20



M 3:1

CeramTec Best. Nr.
CeramTec ref.no.

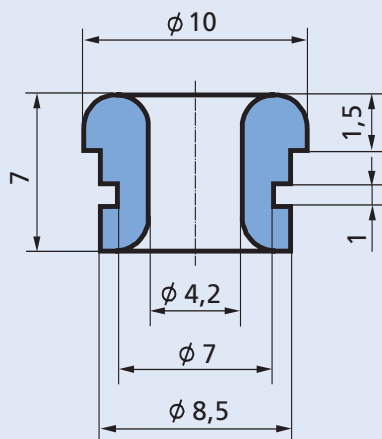
30 3531 61



M 2:1

CeramTec Best. Nr.
CeramTec ref.no.

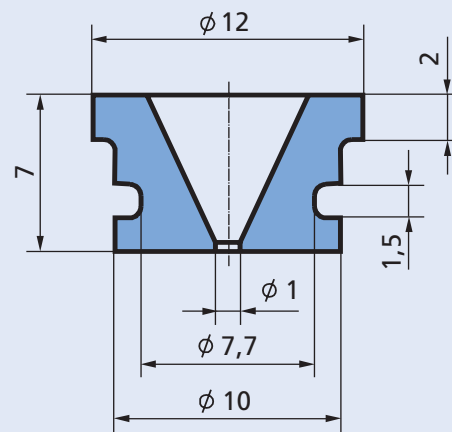
30 3237 00



M 3:1

CeramTec Best. Nr.
CeramTec ref.no.

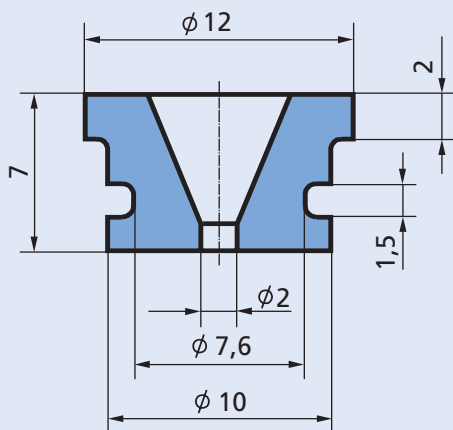
30 0108 02



M 3:1

CeramTec Best. Nr.
CeramTec ref.no.

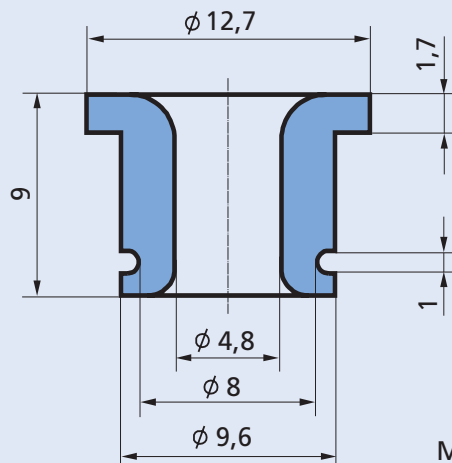
30 3531 32



M 3:1

CeramTec Best. Nr.
CeramTec ref.no.

30 3531 57

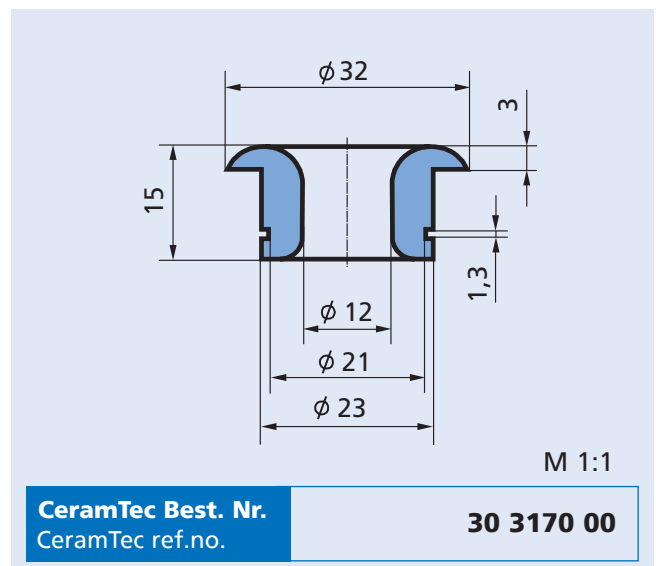
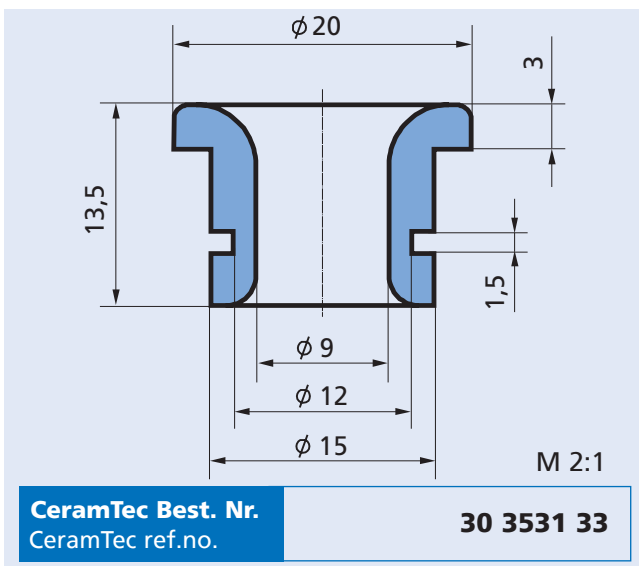
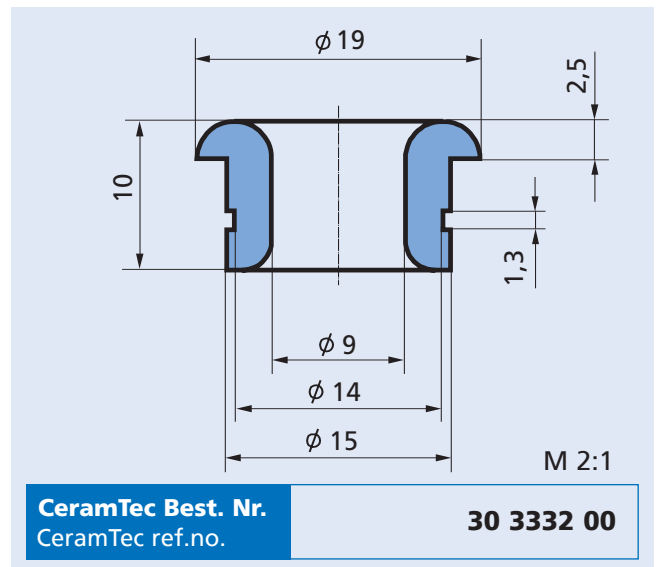
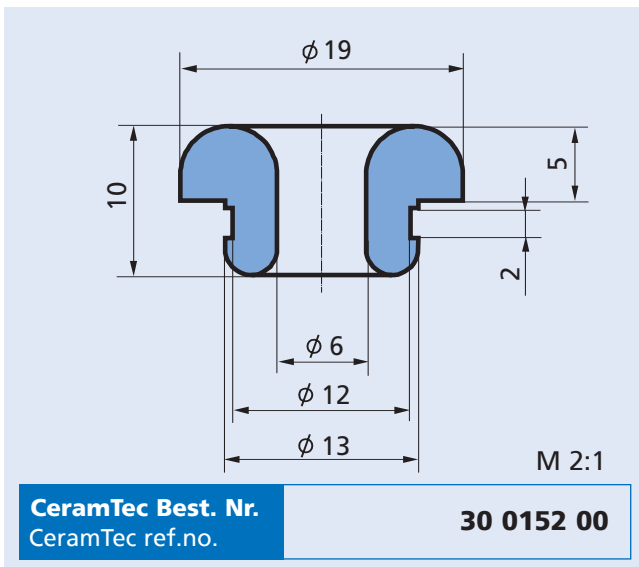
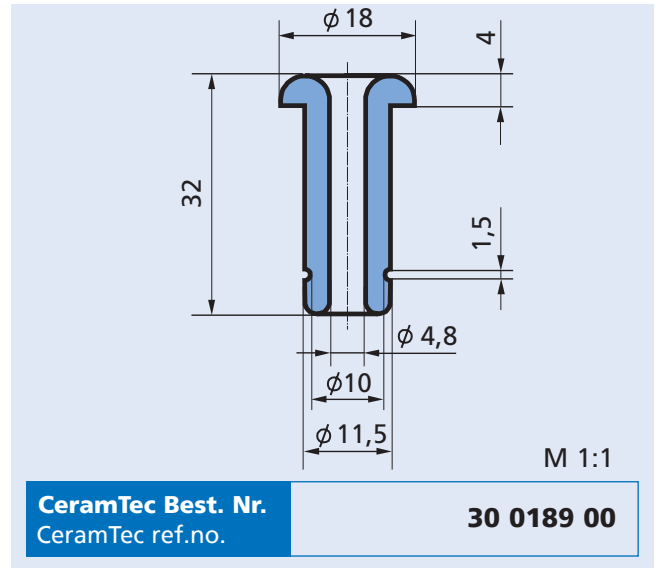
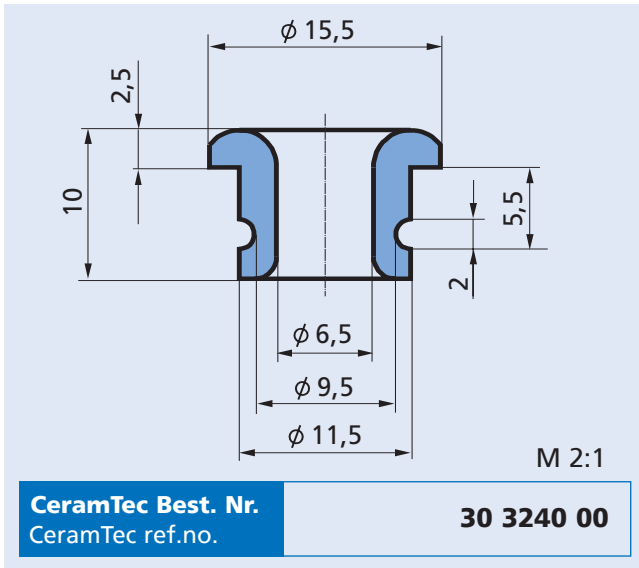


M 3:1

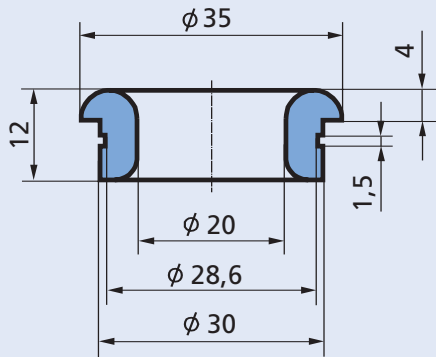
CeramTec Best. Nr.
CeramTec ref.no.

30 3384 00

Bundösen mit Außenrille
Straight shouldered eyelets
with external groove



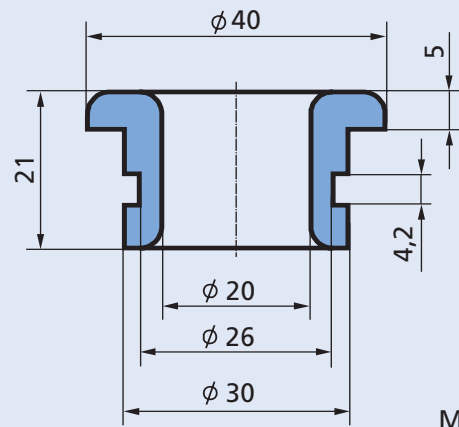
Bundösen mit Außenrinne
Straight shouldered eyelets
with external groove



M 1:1

CeramTec Best. Nr.
CeramTec ref.no.

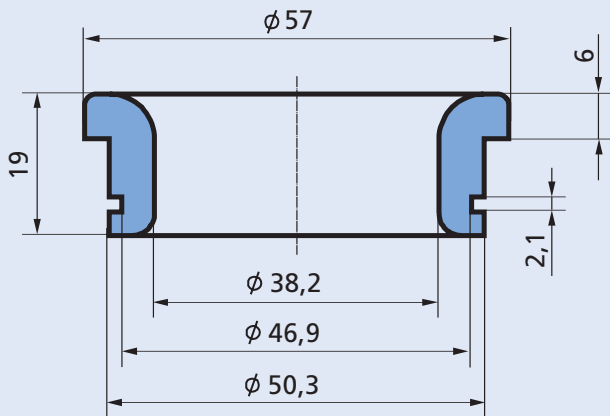
30 3381 00



M 1:1

CeramTec Best. Nr.
CeramTec ref.no.

30 3381 01

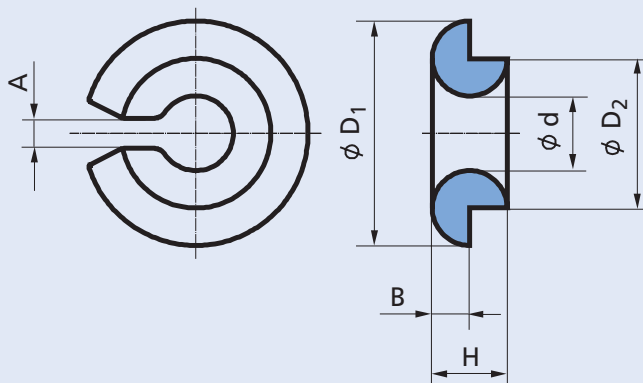


M 1:1

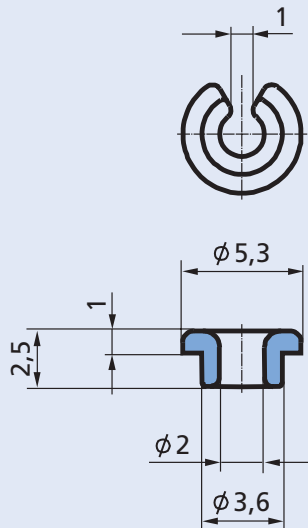
CeramTec Best. Nr.
CeramTec ref.no.

30 3531 26

Bundösen mit Schlitz
Straight shouldered eyelets with slot



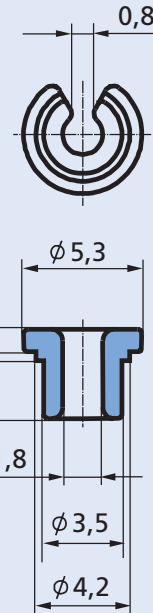
CeramTec Best. Nr. CeramTec ref.no.	Abmessungen (mm) Dimensions						Seite Page
	D ₁	D ₂	B	d	A	H	
30 3531 75	7,0	3,0	1,1	1,8	1,0	3,8	22
30 3531 70	5,3	3,5	1,0	1,8	0,8	4,0	22
30 3531 31	5,3	3,6	1,0	2,0	1,0	2,5	22
30 3144 00	7,0	4,0	1,0	1,5	0,6	2,0	22
30 3417 00	8,0	6,0	1,0	2,0	2,0	2,1	23
30 3424 00	8,0	6,0	1,0	-	1,0	2,8	23
30 0131 01	9,5	7,5	2,0	2,0	2,0	5,5	23
30 0131 00	9,5	7,5	2,0	3,5	3,5	5,5	23
30 3267 00	9,7	7,6	1,75	3,2	2,2	7,75	23
30 0160 00	15,0	10,0	2,5	5,0	2,0	5,0	24



M 3:1

CeramTec Best. Nr.
CeramTec ref.no.

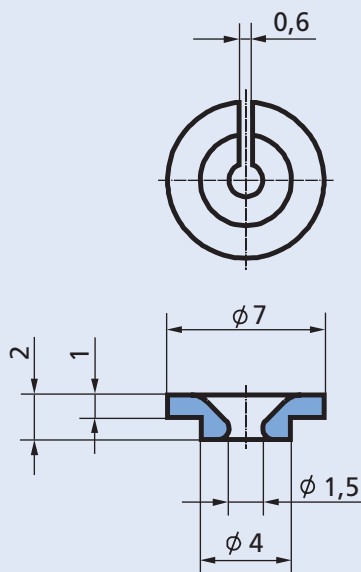
30 3531 31



M 3:1

CeramTec Best. Nr.
CeramTec ref.no.

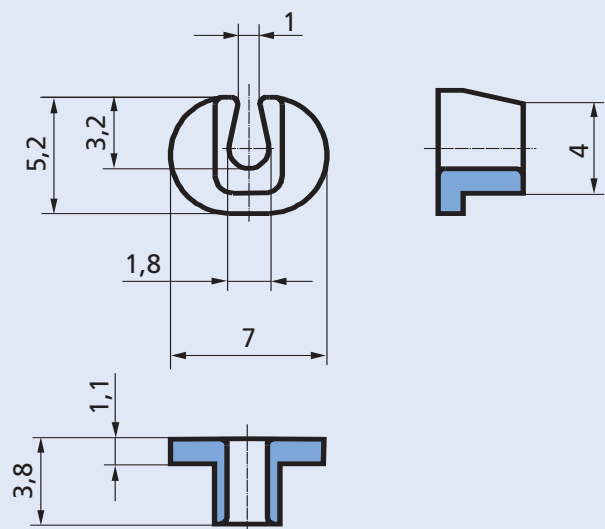
30 3531 70



M 3:1

CeramTec Best. Nr.
CeramTec ref.no.

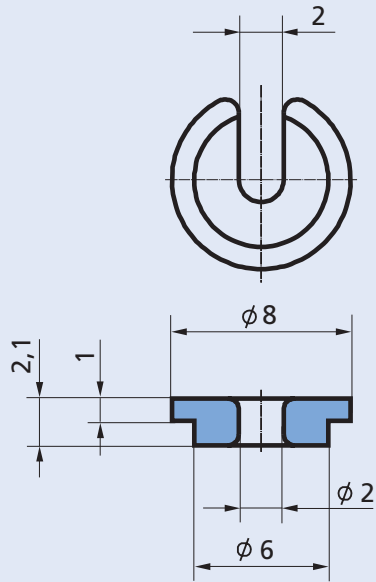
30 3144 00



M 3:1

CeramTec Best. Nr.
CeramTec ref.no.

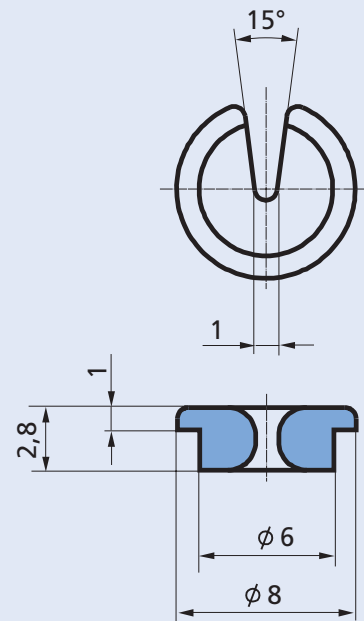
30 3531 75



M 3:1

CeramTec Best. Nr.
CeramTec ref.no.

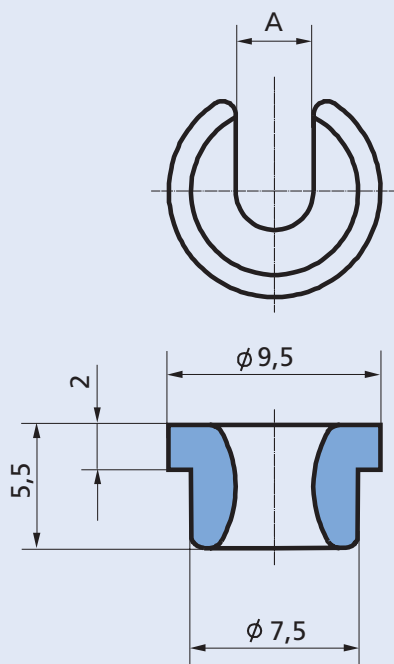
30 3417 00



M 3:1

CeramTec Best. Nr.
CeramTec ref.no.

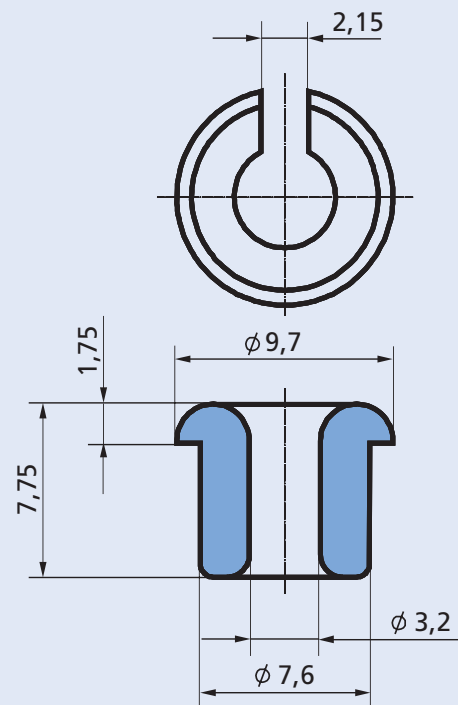
30 3424 00



M 3:1

CeramTec Best. Nr.
CeramTec ref.no.

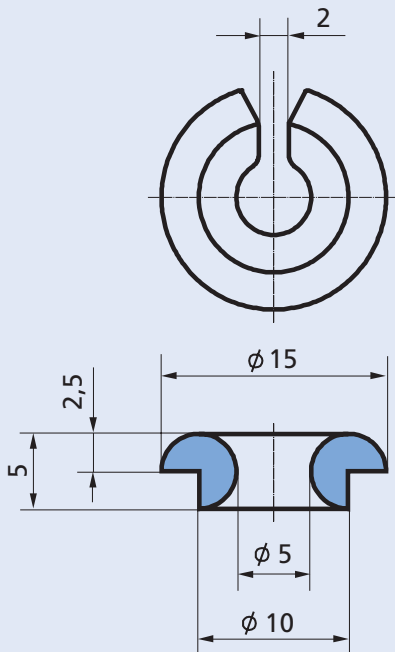
A = 2,0 30 0131 01
A = 3,5 30 0131 00



M 3:1

CeramTec Best. Nr.
CeramTec ref.no.

30 3267 00

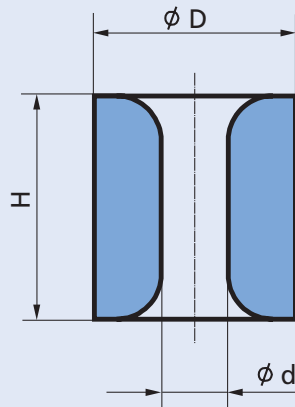


M 2:1

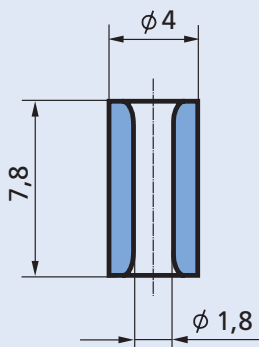
CeramTec Best. Nr.
CeramTec ref.no.

30 0160 00

Zylindrische Ösen
Cylindrical eyelets



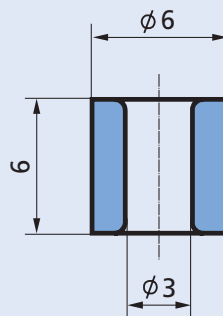
CeramTec Best. Nr. CeramTec ref.no.	Abmessungen (mm) Dimensions			Seite Page	CeramTec Best. Nr. CeramTec ref.no.	Abmessungen (mm) Dimensions			Seite Page
	D	d	H			D	d	H	
30 3208 00	4,0	1,8	7,8	26	30 3531 35	12,0	6,0	12,0	28
30 0167 01	6,0	3,0	6,0	26	30 3129 00	12,0	7,0	7,0	29
30 0130 00	7,5	4,0	3,9	26	30 3201 00	12,0	7,0	8,0	29
30 3197 00	8,0	3,5	10,5	26	30 3115 00	13,0	5,5	6,0	29
30 0195 01	8,0	5,0	8,0	26	30 3115 01	13,0	7,0	6,0	29
30 3531 49	8,5	4,0	14,0	26	30 3531 25	13,0	7,0	6,0	29
30 3152 13	9,0	1,4	10,0	27	30 3531 45	13,0	8,0	19,0	29
30 3152 03	9,0	1,75	10,0	27	30 3531 44	14,0	8,0	19,0	29
30 3152 04	9,0	2,25	10,0	27	30 3531 68	15,0	10,0	20,0	30
30 3152 14	9,0	2,5	10,0	27	30 3531 37	16,0	10,0	5,0	30
30 3152 01	9,0	3,0	10,0	27	30 3531 43	16,0	10,0	19,0	30
30 3152 11	9,0	3,5	10,0	27	30 3202 00	16,0	10,0	10,0	30
30 3152 02	9,0	4,0	10,0	27	30 0139 00	18,5	12,0	12,0	30
30 3152 15	9,0	4,25	10,0	27	30 3531 42	19,1	12,0	17,0	30
30 0154 00	9,0	5,5	3,5	27	30 3114 00	20,0	10,0	18,0	31
30 3531 48	9,5	6,0	15,0	27	30 3203 00	20,0	12,0	12,0	31
30 3378 00	10,0	5,0	5,0	27	30 3531 41	22,3	16,0	24,0	31
30 3200 00	10,0	5,0	6,0	27	30 3531 50	25,0	1,5	17,0	31
30 3531 74	10,0	6,0	8,0	28	30 3531 51	25,0	2,5	17,0	31
30 3119 00	10,0	6,0	8,0	28	30 3160 00	25,0	15,0	17,0	31
30 3531 47	10,6	6,0	15,0	28	30 3530 10	26,0	12,0	12,0	31
30 3525 00	11,0	8,0	7,0	28	30 3531 40	28,9	20,0	21,0	32
30 3531 46	11,7	6,0	15,0	28	30 3531 39	35,0	27,0	30,0	32



M 3:1

CeramTec Best. Nr.
CeramTec ref.no.

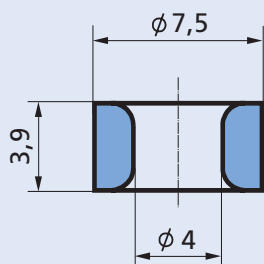
30 3208 00



M 3:1

CeramTec Best. Nr.
CeramTec ref.no.

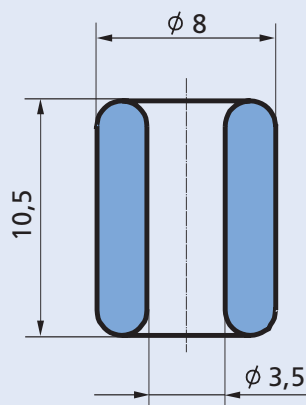
30 0167 01



M 3:1

CeramTec Best. Nr.
CeramTec ref.no.

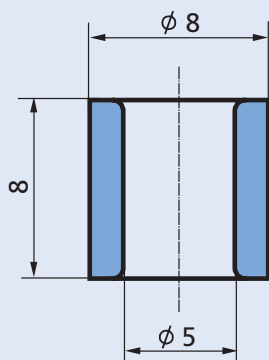
30 0130 00



M 3:1

CeramTec Best. Nr.
CeramTec ref.no.

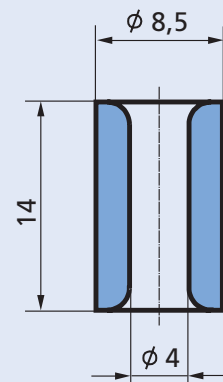
30 3197 00



M 3:1

CeramTec Best. Nr.
CeramTec ref.no.

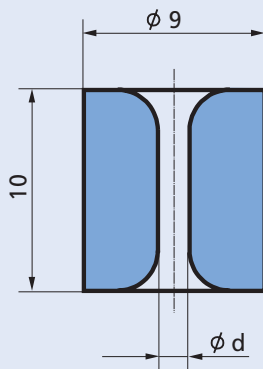
30 0195 01



M 2:1

CeramTec Best. Nr.
CeramTec ref.no.

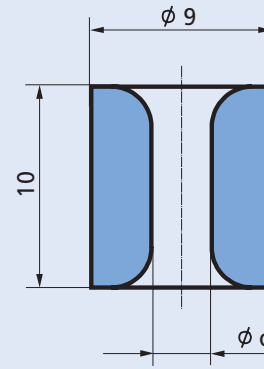
30 3531 49



M 3:1

CeramTec Best. Nr.
CeramTec ref.no.

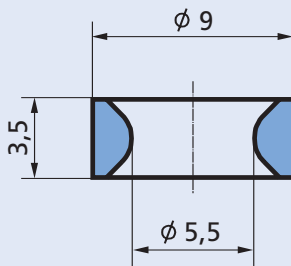
d = 1,4	30 3152 13
d = 1,75	30 3152 03
d = 2,25	30 3152 04
d = 2,5	30 3152 14



M 3:1

CeramTec Best. Nr.
CeramTec ref.no.

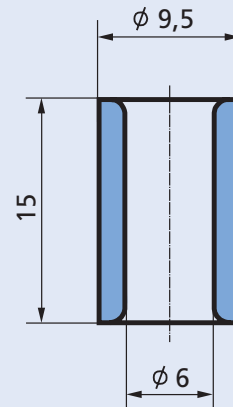
d = 3,0	30 3152 01
d = 3,5	30 3152 11
d = 4,0	30 3152 02
d = 4,25	30 3152 15



M 3:1

CeramTec Best. Nr.
CeramTec ref.no.

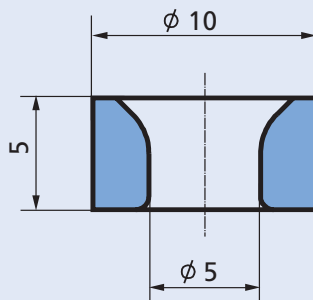
30 0154 00



M 2:1

CeramTec Best. Nr.
CeramTec ref.no.

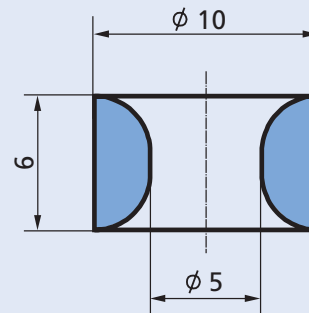
30 3531 48



M 3:1

CeramTec Best. Nr.
CeramTec ref.no.

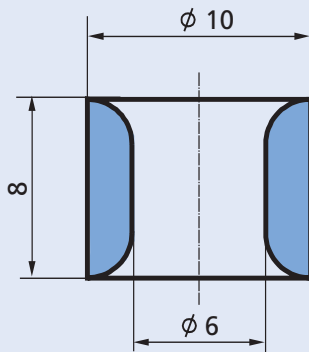
30 3378 00



M 3:1

CeramTec Best. Nr.
CeramTec ref.no.

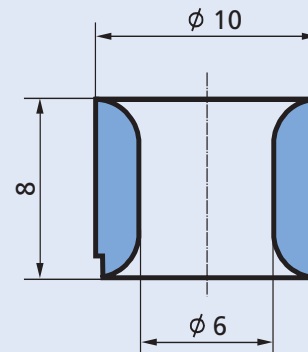
30 3200 00



M 3:1

CeramTec Best. Nr.
CeramTec ref.no.

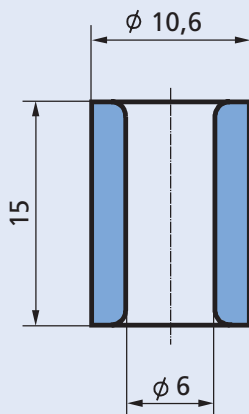
30 3531 74



M 3:1

CeramTec Best. Nr.
CeramTec ref.no.

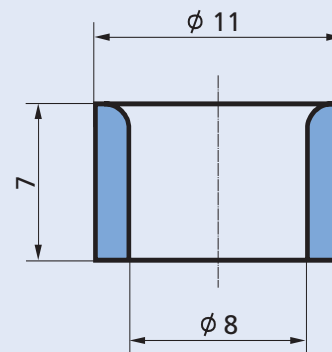
30 3119 00



M 2:1

CeramTec Best. Nr.
CeramTec ref.no.

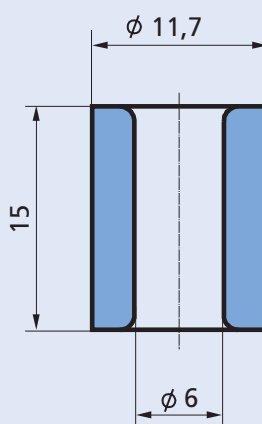
30 3531 47



M 3:1

CeramTec Best. Nr.
CeramTec ref.no.

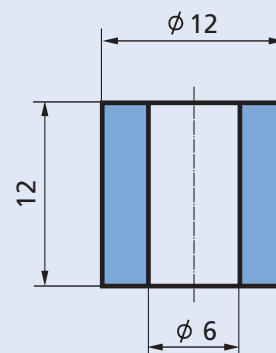
30 3525 00



M 2:1

CeramTec Best. Nr.
CeramTec ref.no.

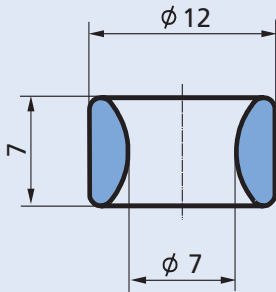
30 3531 46



M 2:1

CeramTec Best. Nr.
CeramTec ref.no.

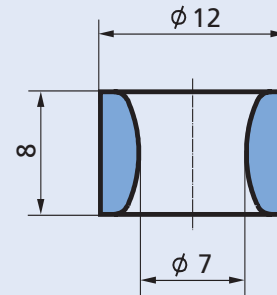
30 3531 35



M 2:1

CeramTec Best. Nr.
CeramTec ref.no.

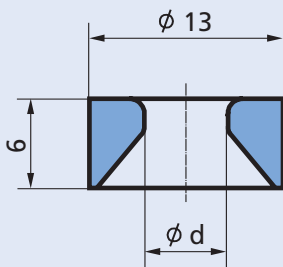
30 3129 00



M 2:1

CeramTec Best. Nr.
CeramTec ref.no.

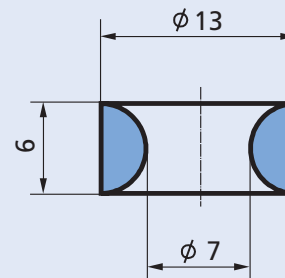
30 3201 00



M 2:1

CeramTec Best. Nr.
CeramTec ref.no.

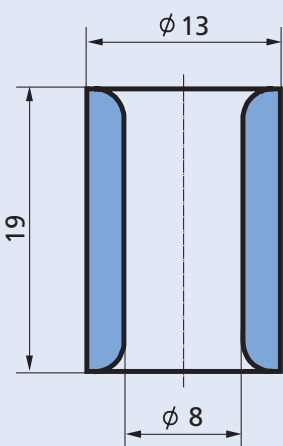
d = 5,5 30 3115 00
d = 7,0 30 3115 01



M 2:1

CeramTec Best. Nr.
CeramTec ref.no.

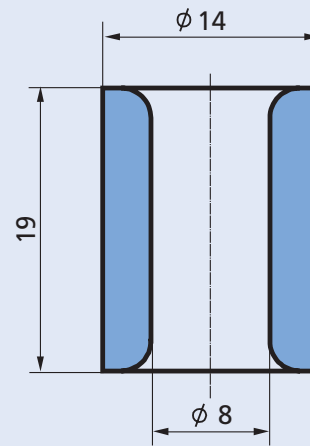
30 3531 25



M 2:1

CeramTec Best. Nr.
CeramTec ref.no.

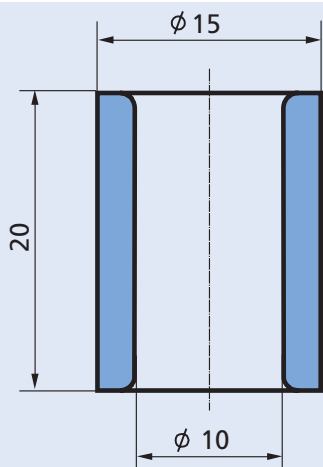
30 3531 45



M 2:1

CeramTec Best. Nr.
CeramTec ref.no.

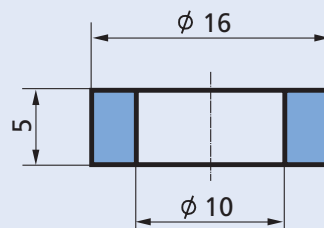
30 3531 44



M 2:1

CeramTec Best. Nr.
CeramTec ref.no.

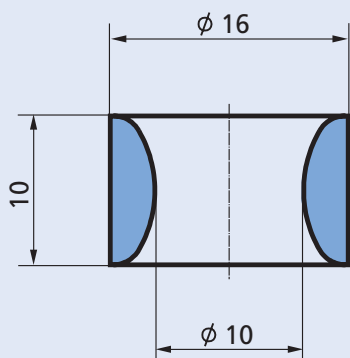
30 3531 68



M 2:1

CeramTec Best. Nr.
CeramTec ref.no.

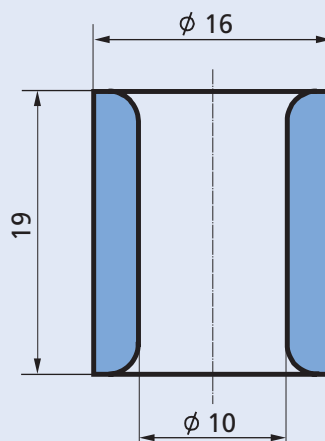
30 3531 37



M 2:1

CeramTec Best. Nr.
CeramTec ref.no.

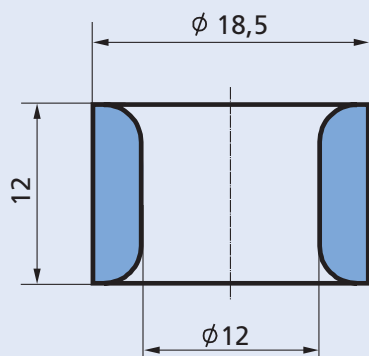
30 3202 00



M 2:1

CeramTec Best. Nr.
CeramTec ref.no.

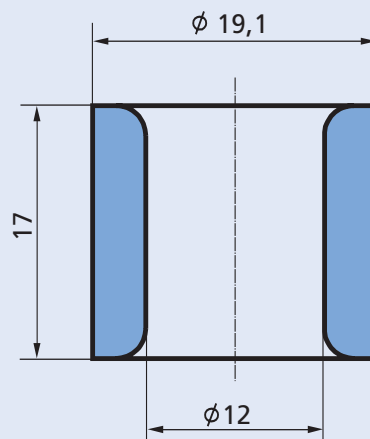
30 3531 43



M 2:1

CeramTec Best. Nr.
CeramTec ref.no.

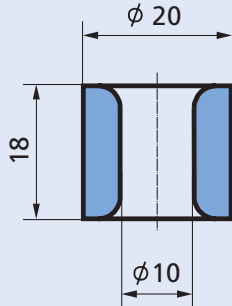
30 0139 00



M 2:1

CeramTec Best. Nr.
CeramTec ref.no.

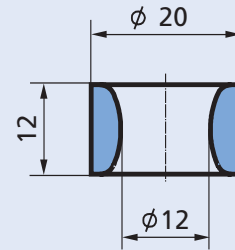
30 3531 42



M 1:1

CeramTec Best. Nr.
CeramTec ref.no.

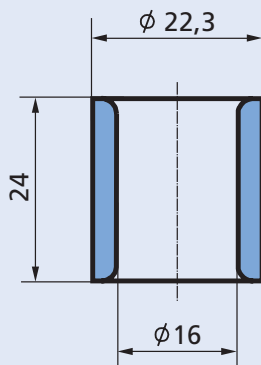
30 3114 00



M 1:1

CeramTec Best. Nr.
CeramTec ref.no.

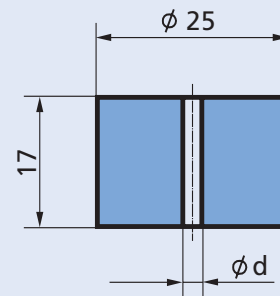
30 3203 00



M 1:1

CeramTec Best. Nr.
CeramTec ref.no.

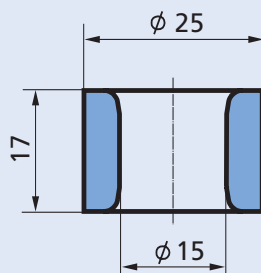
30 3531 41



M 1:1

CeramTec Best. Nr.
CeramTec ref.no.

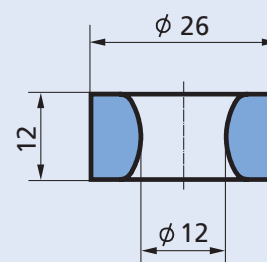
d = 1,5 30 3531 50
d = 2,5 30 3531 51



M 1:1

CeramTec Best. Nr.
CeramTec ref.no.

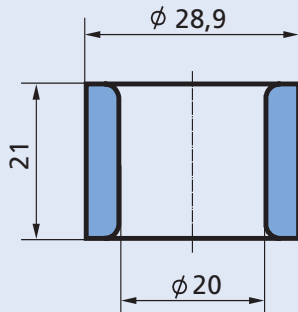
30 3160 00



M 1:1

CeramTec Best. Nr.
CeramTec ref.no.

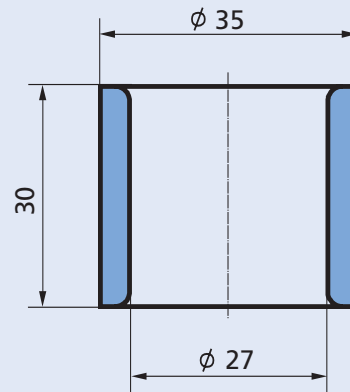
30 3530 10



M 1:1

CeramTec Best. Nr.
CeramTec ref.no.

30 3531 40

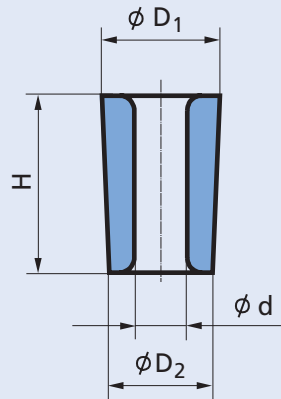


M 1:1

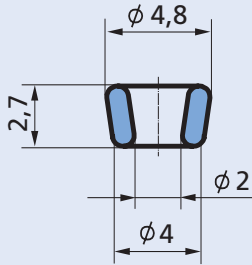
CeramTec Best. Nr.
CeramTec ref.no.

30 3531 39

Konische Ösen
Tapered eyelets



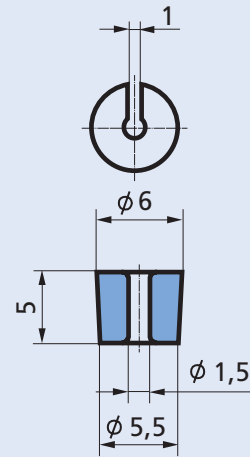
CeramTec Best. Nr. CeramTec ref.no.	Abmessungen (mm) Dimensions				Seite Page
	D ₁	D ₂	d	H	
30 0169 00	4,8	4,0	2,0	2,7	34
30 3337 01	6,0	5,5	1,5	5,0	34
30 3531 52	7,5	7,2	4,0	4,0	34
30 3531 77	8,0	8,0	3,2	10,2	34
30 0173 00	8,0	7,0	3,6	12,0	34
30 0176 00	11,0	9,2	4,9	15,0	34
30 0166 00	13,0	11,8	6,0	11,8	35
30 0177 00	13,0	11,3	6,0	17,0	35
30 3488 01	13,6	9,6	3,8 / 8,2	22,0	35
30 3180 00	14,8	13,0	7,0	18,0	35
30 3466 00	15,0	11,4	6,0	11,0	35
30 3122 00	16,0	14,3	7,6	17,7	35
30 3177 00	20,0	19,1	12,0	18,0	36
30 3178 00	24,0	22,8	16,0	25,0	36



M 3:1

CeramTec Best. Nr.
CeramTec ref.no.

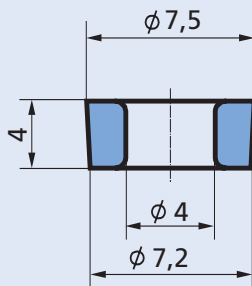
30 0169 00



M 2:1

CeramTec Best. Nr.
CeramTec ref.no.

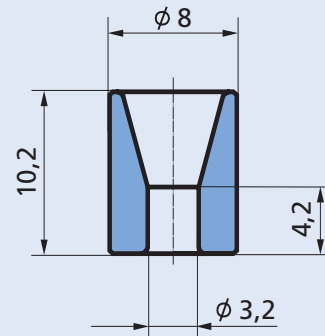
30 3337 01



M 3:1

CeramTec Best. Nr.
CeramTec ref.no.

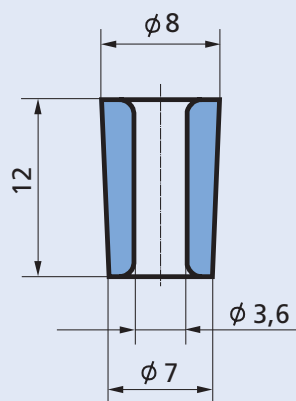
30 3531 52



M 2:1

CeramTec Best. Nr.
CeramTec ref.no.

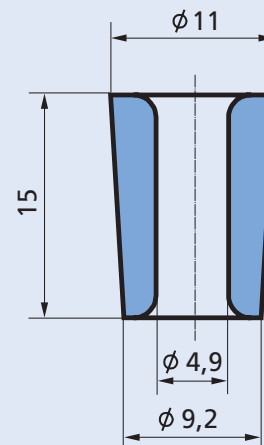
30 3531 77



M 2:1

CeramTec Best. Nr.
CeramTec ref.no.

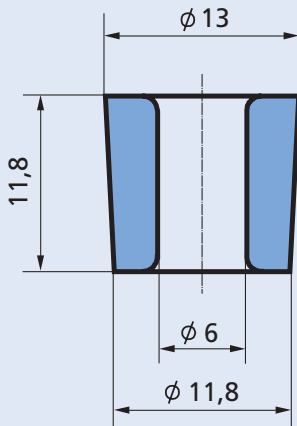
30 0173 00



M 2:1

CeramTec Best. Nr.
CeramTec ref.no.

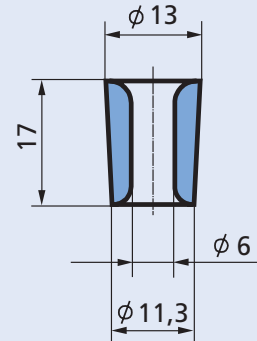
30 0176 00



M 2:1

CeramTec Best. Nr.
CeramTec ref.no.

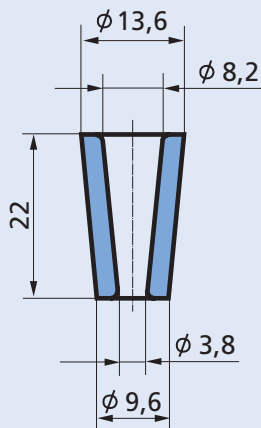
30 0166 00



M 1:1

CeramTec Best. Nr.
CeramTec ref.no.

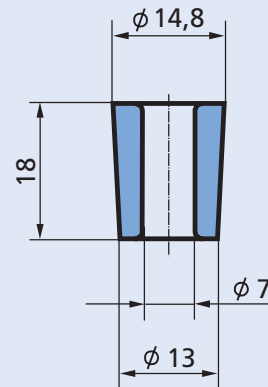
30 0177 00



M 1:1

CeramTec Best. Nr.
CeramTec ref.no.

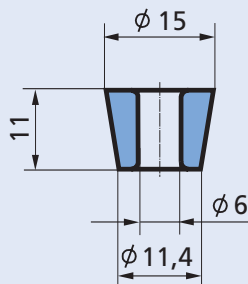
30 3488 01



M 1:1

CeramTec Best. Nr.
CeramTec ref.no.

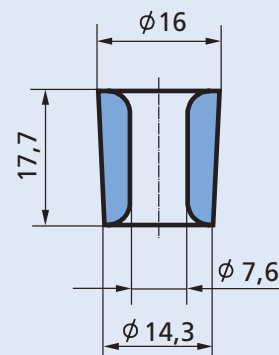
30 3180 00



M 1:1

CeramTec Best. Nr.
CeramTec ref.no.

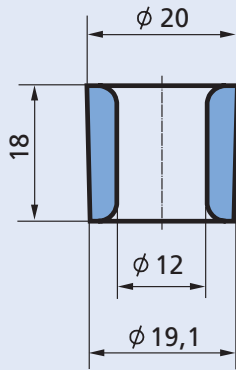
30 3466 00



M 1:1

CeramTec Best. Nr.
CeramTec ref.no.

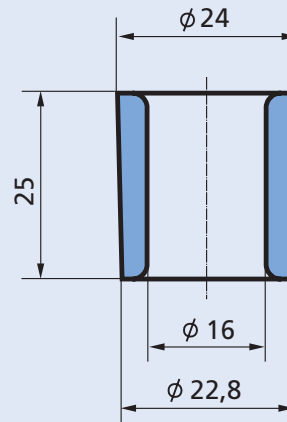
30 3122 00



M 1:1

CeramTec Best. Nr.
CeramTec ref.no.

30 3177 00

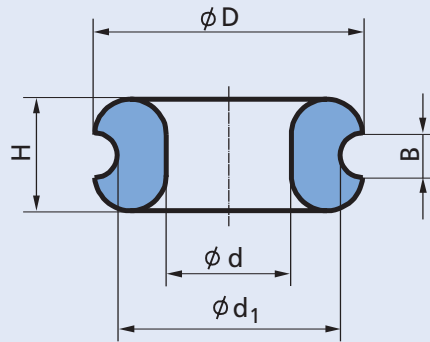


M 1:1

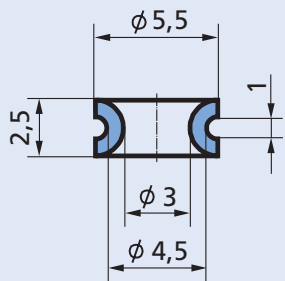
CeramTec Best. Nr.
CeramTec ref.no.

30 3178 00

Rillenösen
Annular eyelets with groove



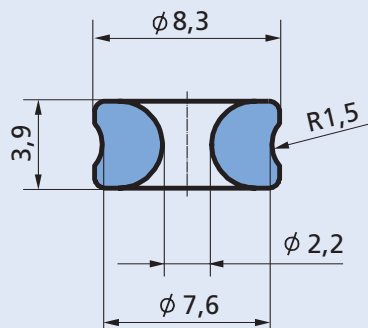
CeramTec Best. Nr. CeramTec ref.no.	Abmessungen (mm) Dimensions					Seite Page
	D	d	d ₁	B	H	
30 0159 01	8,3	2,2	7,6	3,0	3,9	38
30 0138 00	5,5	3,0	4,5	1,0	2,5	38
30 0158 00	8,5	3,2	6,4	2,0	4,4	38
30 0107 00	8,5	4,2	7,0	4,0	7,0	38
30 0112 00	11,4	4,5	9,0	-	4,8	38
30 0110 02	11,4	4,5	9,0	-	4,8	39
30 0156 00	12,0	5,6	10,0	2,0	5,0	39
30 0168 00	18,0	6,0	12,0	3,6	9,0	39
30 3526 01	11,0	7,0	9,0	6,0	10,0	38
30 3531 30	13,0	7,0	10,5	2,5	6,0	39
30 3531 76	14,0	7,2	10,9	2,0	6,0	39
30 3531 00	13,3	8,5	12,3	6,0	10,0	39
30 0127 00	18,7	10,3	14,6	3,0	5,8	40
30 5821 00	33,0	21,0	30,0	3,5	7,8	40



M 3:1

CeramTec Best. Nr.
CeramTec ref.no.

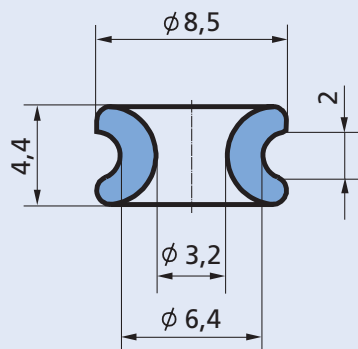
30 0138 00



M 3:1

CeramTec Best. Nr.
CeramTec ref.no.

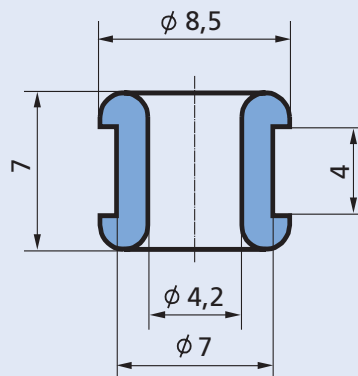
30 0159 01



M 3:1

CeramTec Best. Nr.
CeramTec ref.no.

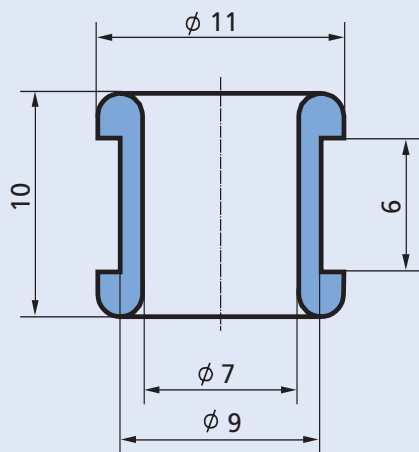
30 0158 00



M 3:1

CeramTec Best. Nr.
CeramTec ref.no.

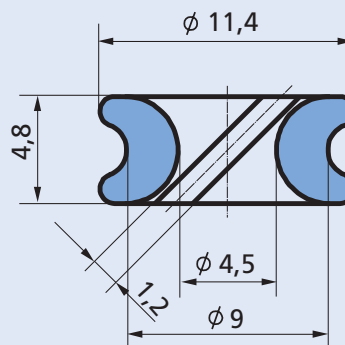
30 0107 00



M 3:1

CeramTec Best. Nr.
CeramTec ref.no.

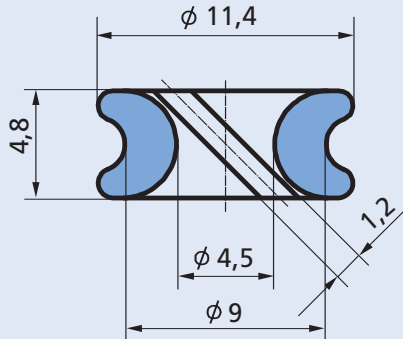
30 3526 01



M 3:1

CeramTec Best. Nr.
CeramTec ref.no.

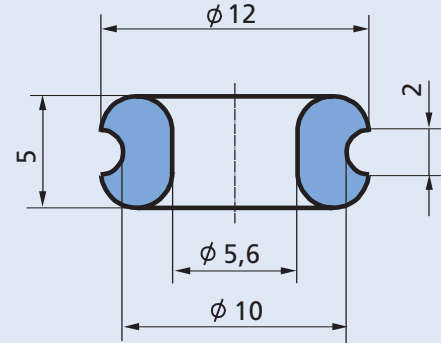
30 0112 00



M 3:1

CeramTec Best. Nr.
CeramTec ref.no.

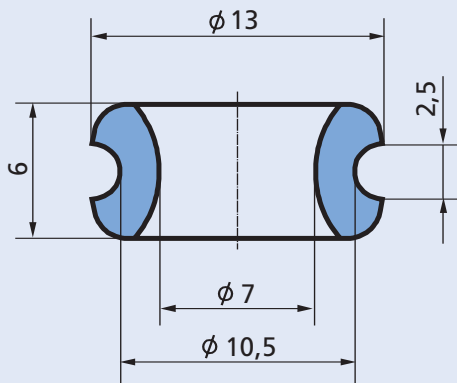
30 0110 02



M 3:1

CeramTec Best. Nr.
CeramTec ref.no.

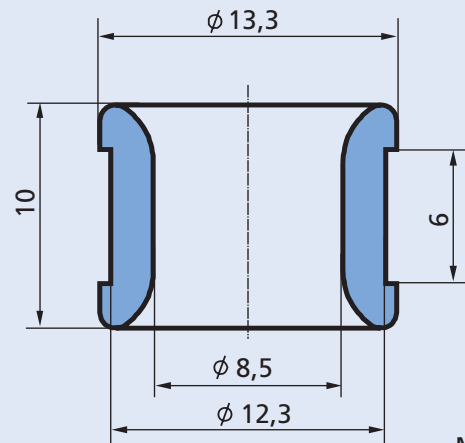
30 0156 00



M 3:1

CeramTec Best. Nr.
CeramTec ref.no.

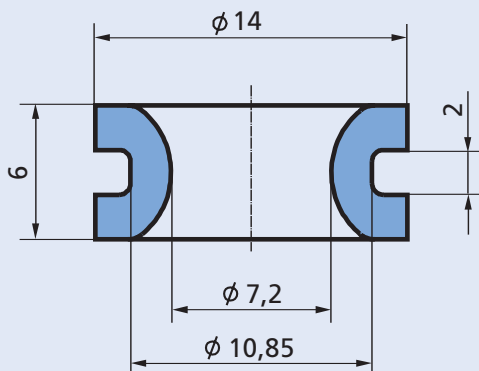
30 3531 30



M 3:1

CeramTec Best. Nr.
CeramTec ref.no.

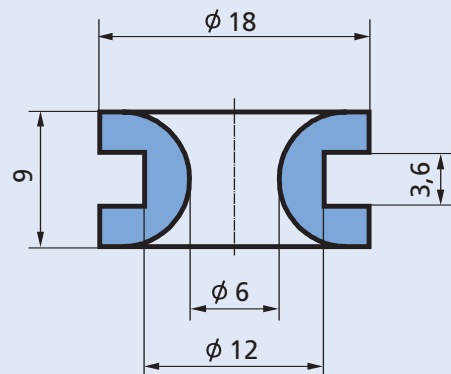
30 3531 00



M 3:1

CeramTec Best. Nr.
CeramTec ref.no.

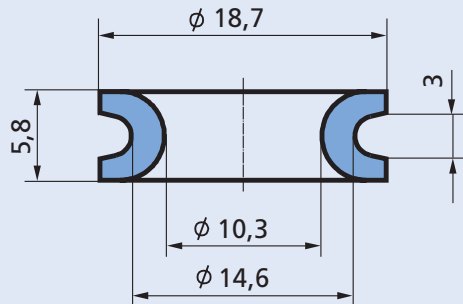
30 3531 76



M 2:1

CeramTec Best. Nr.
CeramTec ref.no.

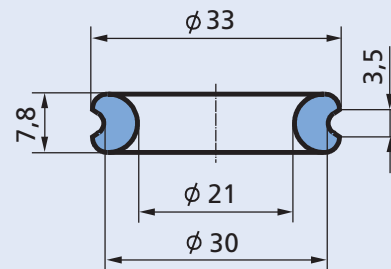
30 0168 00



M 2:1

CeramTec Best. Nr.
CeramTec ref.no.

30 0127 00

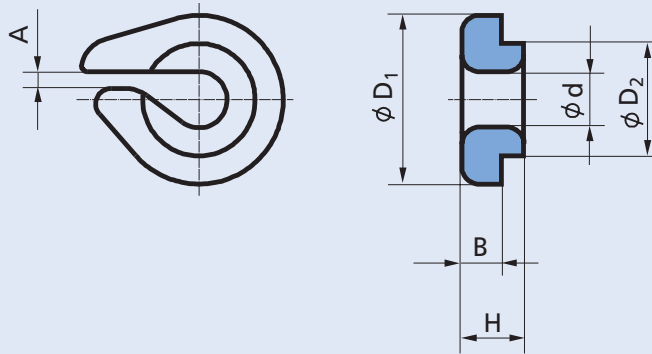


M 1:1

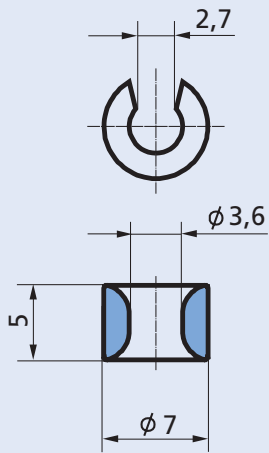
CeramTec Best. Nr.
CeramTec ref.no.

30 5821 00

Spezialösen
Special eyelets



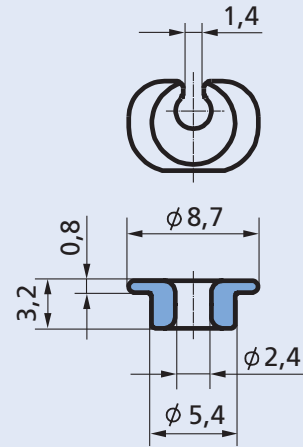
CeramTec Best. Nr. CeramTec ref.no.	Abmessungen (mm) Dimensions						Seite Page
	D ₁	D ₂	d	A	B	H	
30 3531 32	12,0	10,0	1,0	-	2,0	7,0	43
30 3250 00	8,7	5,4	2,4	1,4	0,8	3,2	42
30 3364 01	12,0	9,0	3,0	-	1,6	5,4	42
30 5915 01	30,0	20,0	3,0	-	5,0	30,0	43
30 3531 77	8,0	8,0	3,2	-	-	10,2	43
30 5915 00	30,0	20,0	3,3	-	5,0	29,5	43
30 6327 01	12,8 / 14,5	8,8	3,5 / 5,5	-	4,5	7,0	44
30 0112 00	7,0	7,0	3,6	2,7	-	5,0	42
30 3365 00	11,0	9,0	4,0	-	-	5,9	42
30 0124 00	12,5	8,5	4,0	-	-	5,0	44
30 3279 02	15,0	10,0	5,0	1,5	2,0	18,0	42
30 6385 02	10,0	-	6,0	-	-	19,0	44
30 3531 69	18,0	18,0	5 / 9,4	-	-	15,0	42
30 3526 02	10,8	-	-	6,5	2,0	10,0	45
30 3526 00	11,0	-	-	7,0	2,0	10,0	45
30 3526 03	13,3	-	-	8,5	2,0	10,0	45
30 3531 11	28,0	-	-	10,0	3,5	21,0	45



M 2:1

CeramTec Best. Nr.
CeramTec ref.no.

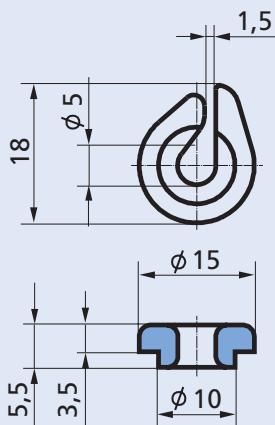
30 0112 00



M 2:1

CeramTec Best. Nr.
CeramTec ref.no.

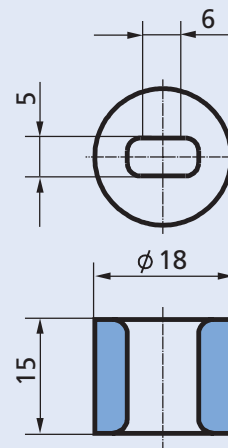
30 3250 00



M 1:1

CeramTec Best. Nr.
CeramTec ref.no.

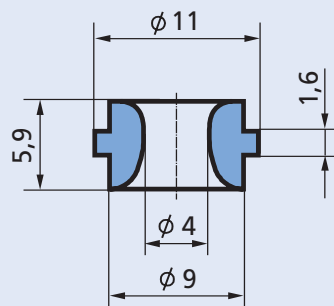
30 3279 02



M 1:1

CeramTec Best. Nr.
CeramTec ref.no.

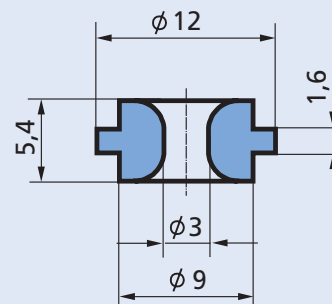
30 3531 69



M 2:1

CeramTec Best. Nr.
CeramTec ref.no.

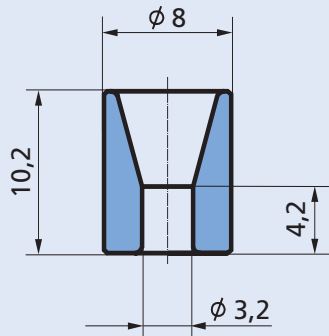
30 3365 00



M 2:1

CeramTec Best. Nr.
CeramTec ref.no.

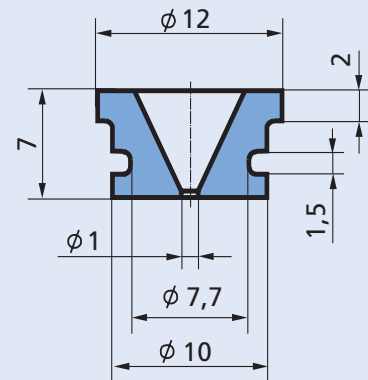
30 3364 01



M 2:1

CeramTec Best. Nr.
CeramTec ref.no.

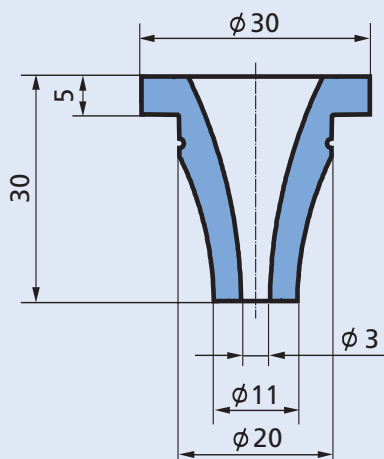
30 3531 77



M 2:1

CeramTec Best. Nr.
CeramTec ref.no.

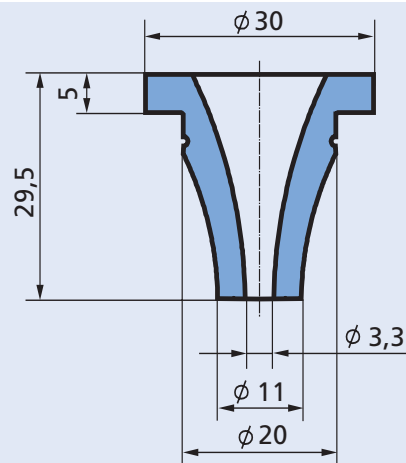
30 3531 32



M 1:1

CeramTec Best. Nr.
CeramTec ref.no.

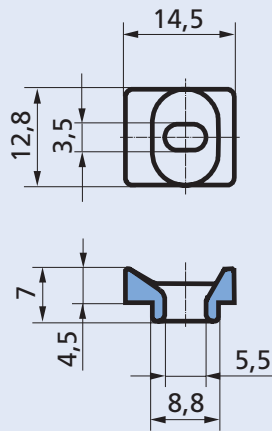
30 5915 01



M 1:1

CeramTec Best. Nr.
CeramTec ref.no.

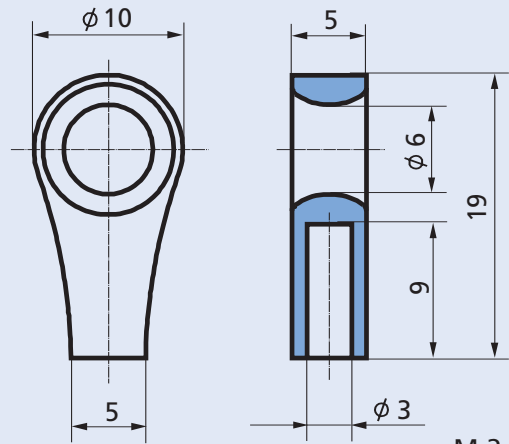
30 5915 00



M 1:1

CeramTec Best. Nr.
CeramTec ref.no.

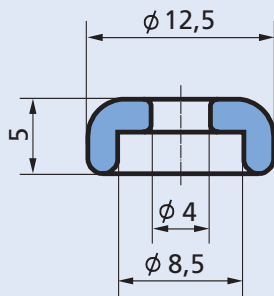
30 6327 01



M 2:1

CeramTec Best. Nr.
CeramTec ref.no.

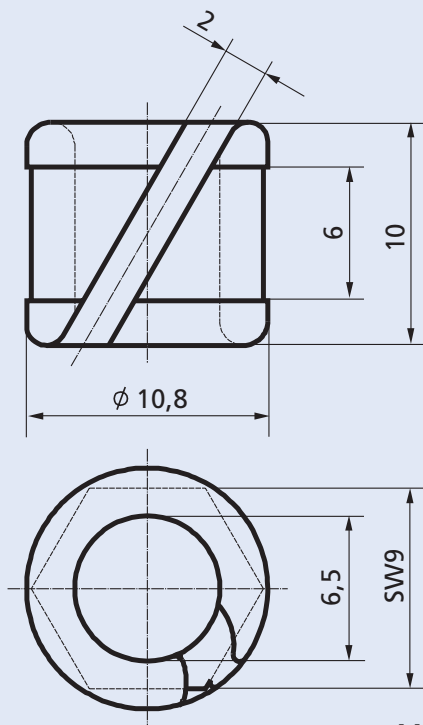
30 6385 02



M 2:1

CeramTec Best. Nr.
CeramTec ref.no.

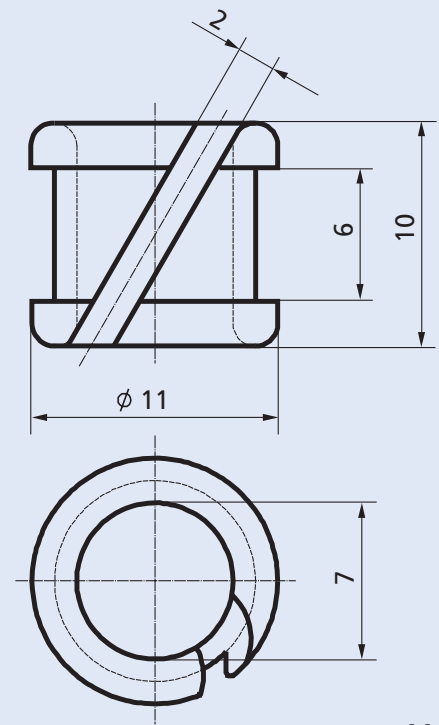
30 0124 00



M 3:1

CeramTec Best. Nr.
CeramTec ref.no.

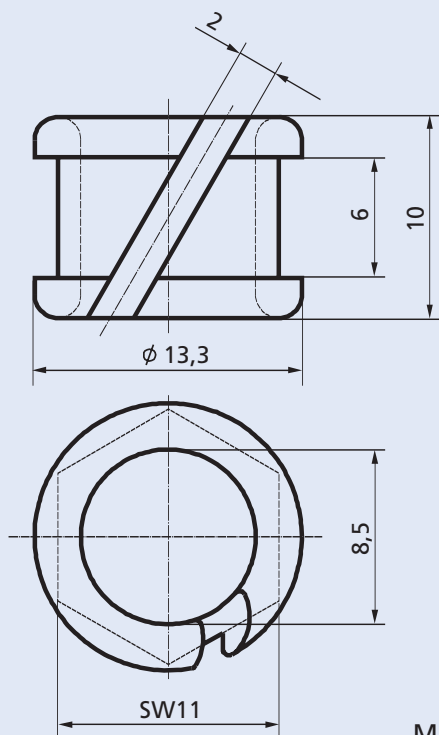
30 3526 02



M 3:1

CeramTec Best. Nr.
CeramTec ref.no.

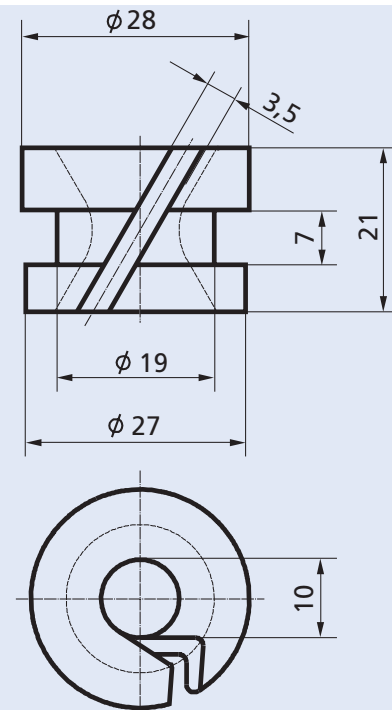
30 3526 00



M 3:1

CeramTec Best. Nr.
CeramTec ref.no.

30 3526 03



M 1:1

CeramTec Best. Nr.
CeramTec ref.no.

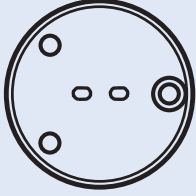
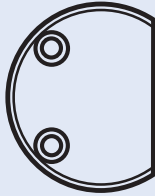
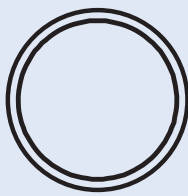
30 3531 11

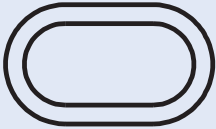
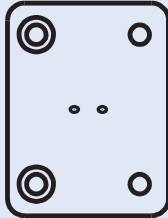
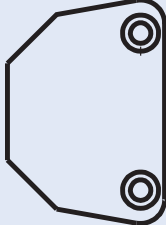


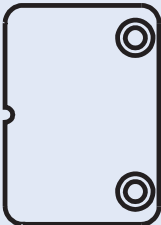
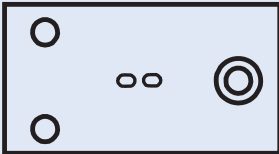
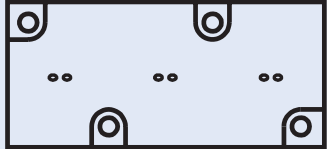
Verwirbelungsdüsen Intermingling jet plates

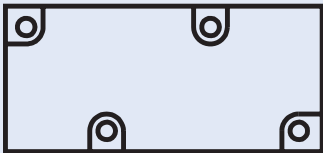
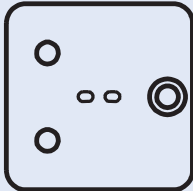
CeramTec Best. Nr. CeramTec ref.no.	Abmessungen (mm) Dimensions									Seite Page
	Ø D ₁	Ø D ₂	L ₁	L ₂	L ₃	L ₄	Ø d _s	Ø d _i	A	
30 6230 32	29	21,2	23,5	-	-	-	3,4	-	-	5
30 6230 34	-	-	37	25	26,8	16	3,4	-	-	9
30 6230 40	-	-	37	26	26,8	17,8	-	1,3	90°	8
30 6230 41	-	-	37	26	26,8	-	3,4	-	-	9
30 6230 42	-	-	35	26	27	18	-	1,0	90°	8
30 6230 43	-	-	35	26	27	18	-	1,3	90°	8
30 6230 46	-	-	29	29	21,2	-	-	1,1	90°	12
30 6230 47	29	21,2	24	-	-	-	3,4	-	-	5
30 6230 48	-	-	29	29	21,2	-	-	0,9	90°	12
30 6230 54	-	-	37	26	26,8	17,8	-	0,9	90°	8
30 6230 58	-	-	29	29	21,2	-	-	1,5	90°	12
30 6230 64	29	21,2	-	-	-	-	-	1,1	90°	5
30 6230 65	29	21,2	-	-	-	-	-	1,1	90°	4
30 6230 70	29	21,2	-	-	-	-	-	1,1	90°	4
30 6230 71	29	21,2	-	-	-	-	-	0,9	90°	4
30 6230 72	29	21,2	-	-	-	-	-	1,4	90°	4
30 6230 73	29	21,2	24	-	-	-	3,4	-	-	5
30 6230 89	-	-	35	26	27	18	-	1,5	90°	8
30 6230 94	-	-	37	26	26,8	17,8	-	1,1	90°	8
30 6230 96	-	-	61	28	37	20	-	1,1	90°	11
30 6230 97	-	-	61	28	37	20	3,4	-	-	11
30 6231 02	-	-	33	19	-	-	-	-	-	7
30 6231 03	17	-	-	-	-	-	-	0,8	90°	6
30 6231 04	17	-	-	-	-	-	-	-	-	7
30 6231 05	15	-	-	-	-	-	-	-	-	7
30 6231 06	15	-	-	-	-	-	-	1,0	90°	6
30 6231 08	-	-	26,5	19,5	13	-	-	0,9	120°	10
30 6231 13	17	-	-	-	-	-	-	1,0	90°	6
30 6231 14	-	-	37	26	26,8	17,8	-	0,8	90°	8
30 6231 15	-	-	36	19,6	13	-	-	1,1	90°	10
30 6231 17	-	-	40	40	29	28	-	2,0	70°	12
30 6231 26	-	-	25	20	17	12	-	1,1	90°	8
30 6231 27	-	-	25	18,5	17	11	3,2	-	-	9

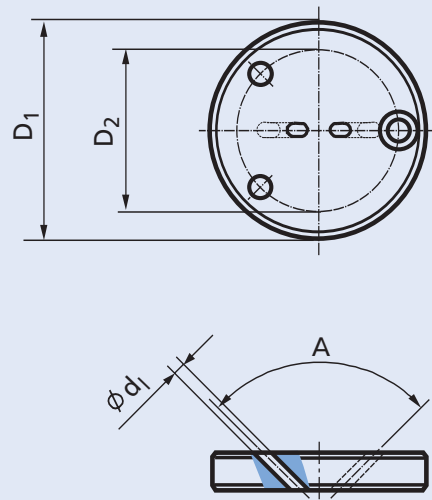
Verwirbelungsdüsen • Intermingling jet plates

		
<p>Seite • Page 4 - 6</p>	<p>Seite • Page 5</p>	<p>Seite • Page 7</p>

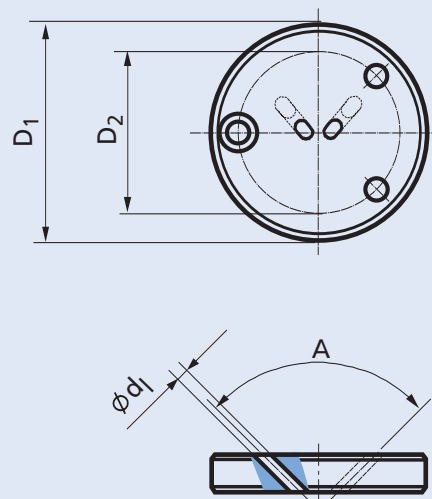
		
<p>Seite • Page 7</p>	<p>Seite • Page 8</p>	<p>Seite • Page 9</p>

		
<p>Seite • Page 9</p>	<p>Seite • Page 10</p>	<p>Seite • Page 11</p>

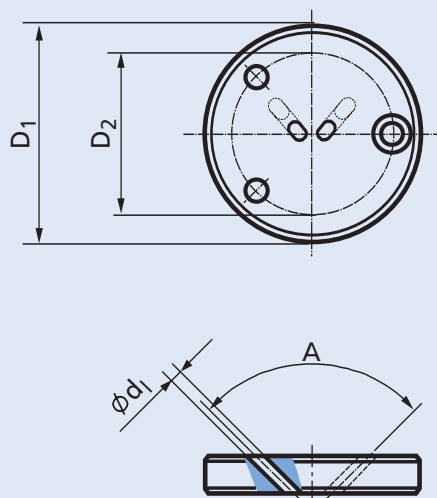
		
<p>Seite • Page 11</p>	<p>Seite • Page 12</p>	



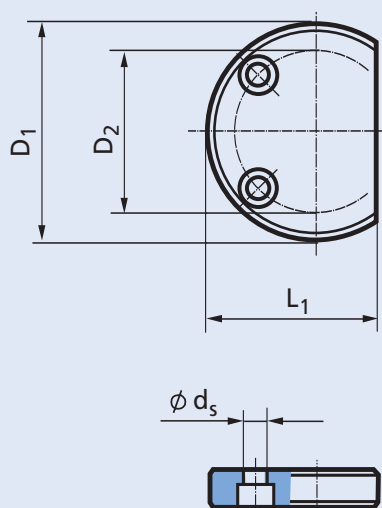
CeramTec Best. Nr. CeramTec ref.no.	Abmessungen (mm) Dimensions			
	Ø D ₁	Ø D ₂	Ø d ₁	A
30 6230 71	29,0	21,2	0,9	90°
30 6230 70	29,0	21,2	1,1	90°
30 6230 72	29,0	21,2	1,4	90°



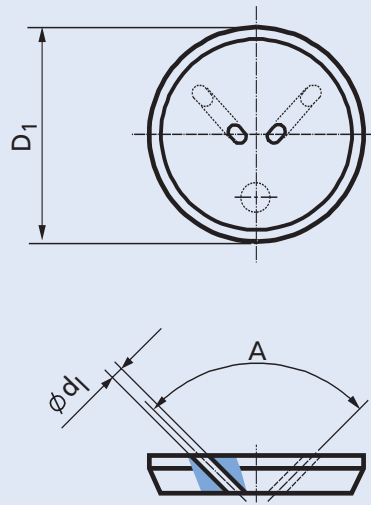
CeramTec Best. Nr. CeramTec ref.no.	Abmessungen (mm) Dimensions			
	Ø D ₁	Ø D ₂	Ø d ₁	A
30 6230 65	29,0	21,2	1,1	90°



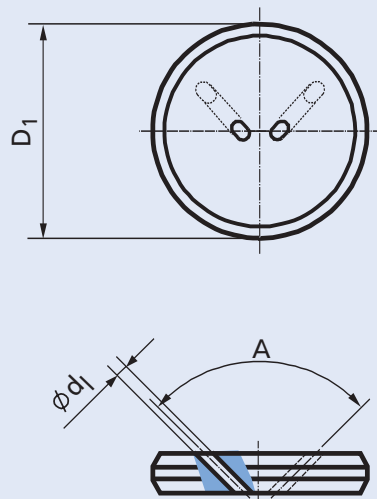
CeramTec Best. Nr. CeramTec ref.no.	Abmessungen (mm) Dimensions			
	Ø D ₁	Ø D ₂	Ø d ₁	A
30 6230 64	29,0	21,2	1,1	90°



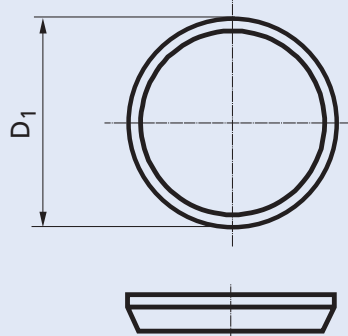
CeramTec Best. Nr. CeramTec ref.no.	Abmessungen (mm) Dimensions			
	Ø D ₁	Ø D ₂	L ₁	Ø d _s
30 6230 73	29,0	21,2	24,0	3,4
30 6230 32	29,0	21,2	23,5	3,4
30 6230 47	29,0	21,2	24,0	3,4



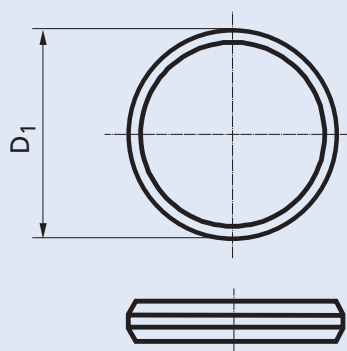
CeramTec Best. Nr. CeramTec ref.no.	Abmessungen (mm) Dimensions		
	Ø D ₁	Ø d ₁	A
30 6231 03	17,0	0,8	90°
30 6231 13	17,0	1,0	90°



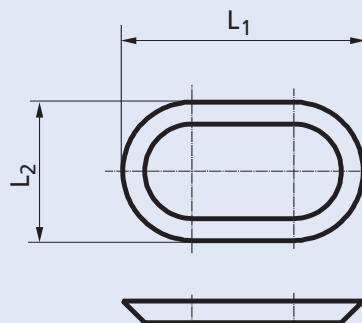
CeramTec Best. Nr. CeramTec ref.no.	Abmessungen (mm) Dimensions		
	Ø D ₁	Ø d ₁	A
30 6231 06	15,0	1,0	90°



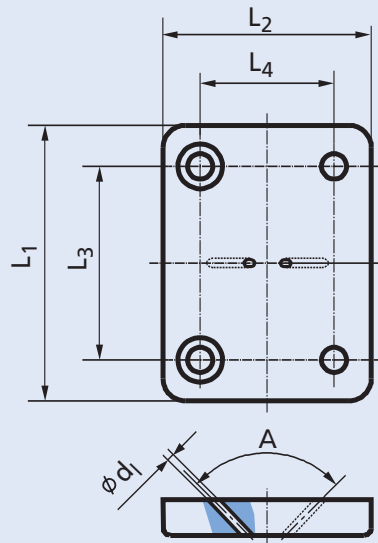
CeramTec Best. Nr. CeramTec ref.no.	Abmessungen (mm) Dimensions
30 6231 04	$\varnothing D_1$ 17,0



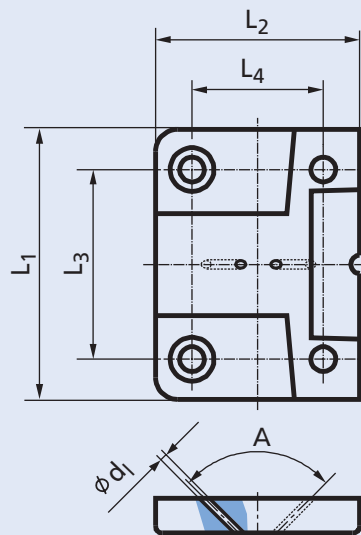
CeramTec Best. Nr. CeramTec ref.no.	Abmessungen (mm) Dimensions
30 6231 05	$\varnothing D_1$ 15,0



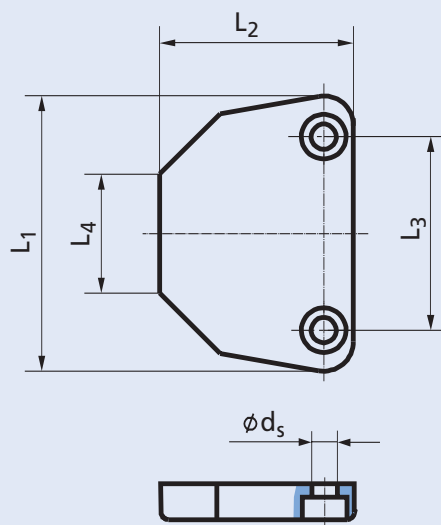
CeramTec Best. Nr. CeramTec ref.no.	Abmessungen (mm) Dimensions	
30 6231 02	L_1 33	L_2 19



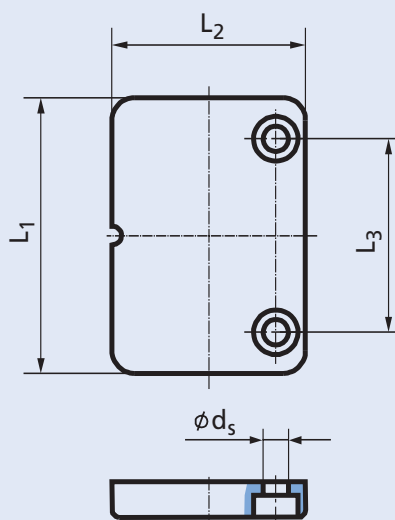
CeramTec Best. Nr. CeramTec ref.no.	Abmessungen (mm) Dimensions					
	L ₁	L ₂	L ₃	L ₄	Ø d ₁	A
30 6231 14	37	26	26,8	17,8	0,8	90°
30 6230 54	37	26	26,8	17,8	0,9	90°
30 6231 26	25	20	17,0	12,0	1,1	90°
30 6230 94	37	26	26,8	17,8	1,1	90°
30 6230 40	37	26	26,8	17,8	1,3	90°



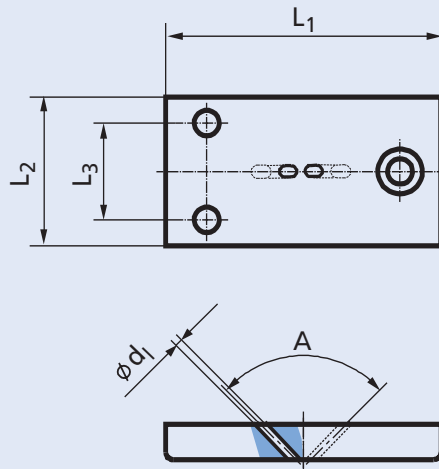
CeramTec Best. Nr. CeramTec ref.no.	Abmessungen (mm) Dimensions					
	L ₁	L ₂	L ₃	L ₄	Ø d ₁	A
30 6230 42	35	26	27	18	1,0	90°
30 6230 43	35	26	27	18	1,3	90°
30 6230 89	35	26	27	18	1,5	90°



CeramTec Best. Nr. CeramTec ref.no.	Abmessungen (mm) Dimensions				
	L ₁	L ₂	L ₃	L ₄	Ø d _s
30 6231 27	25	18,5	17,0	11	3,2
30 6230 34	37	25,0	26,8	16	3,4



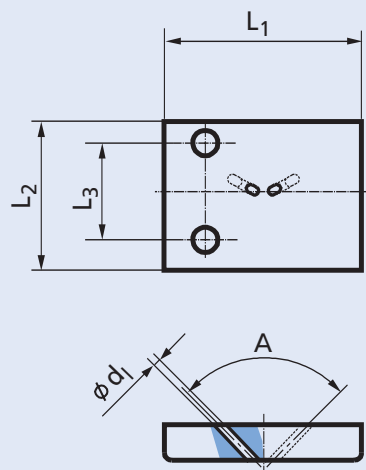
CeramTec Best. Nr. CeramTec ref.no.	Abmessungen (mm) Dimensions				
	L ₁	L ₂	L ₃	L ₄	Ø d _s
30 6230 41	37	26	26,8	-	3,4



CeramTec Best. Nr.
CeramTec ref.no.

Abmessungen (mm)
Dimensions

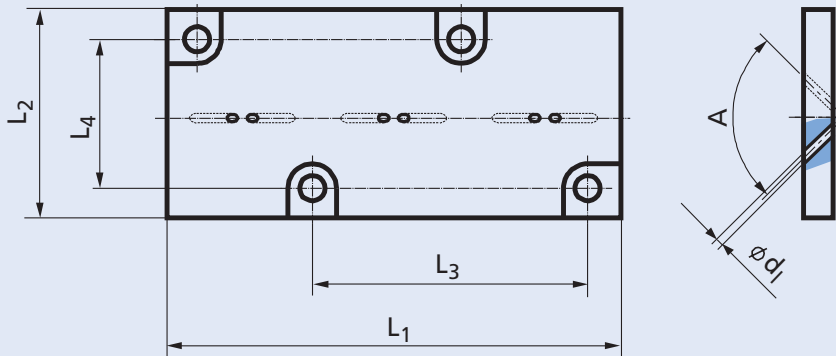
	L ₁	L ₂	L ₃	Ø d ₁	A
30 6231 15	36	19,6	13	1,1	90°



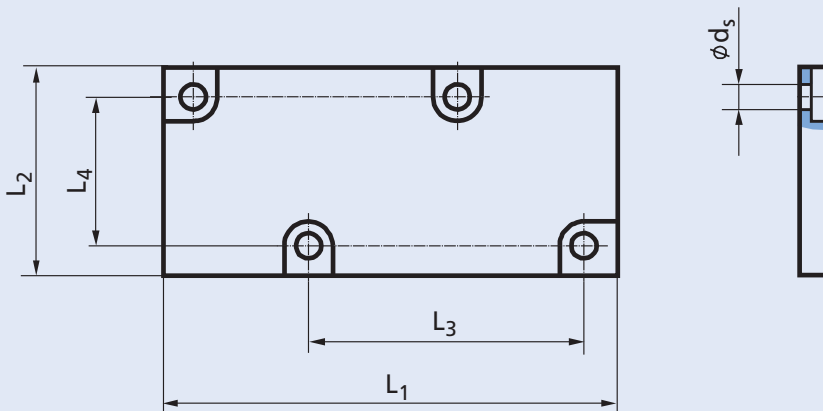
CeramTec Best. Nr.
CeramTec ref.no.

Abmessungen (mm)
Dimensions

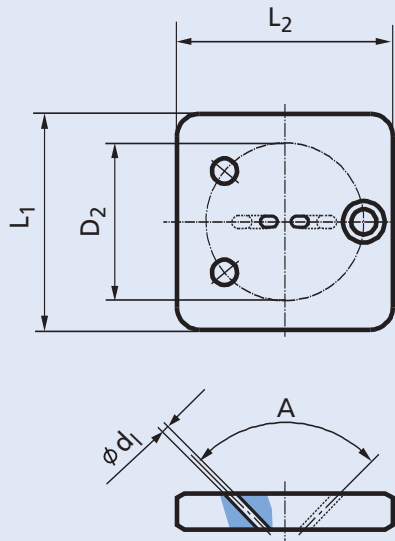
	L ₁	L ₂	L ₃	Ø d ₁	A
30 6231 08	26,5	19,5	13	0,9	120°



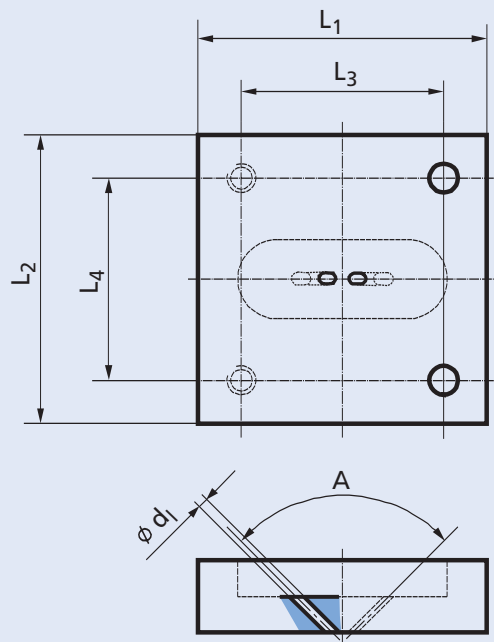
CeramTec Best. Nr. CeramTec ref.no.	Abmessungen (mm) Dimensions					
	L ₁	L ₂	L ₃	L ₄	∅ d ₁	A
30 6230 96	61	28	37	20	1,1	90°



CeramTec Best. Nr. CeramTec ref.no.	Abmessungen (mm) Dimensions					
	L ₁	L ₂	L ₃	L ₄	∅ d _s	
30 6230 97	61	28	37	20	3,4	



CeramTec Best. Nr. CeramTec ref.no.	Abmessungen (mm) Dimensions				
	L ₁	L ₂	Ø D ₂	Ø d ₁	A
30 6230 48	29	29	21,2	0,9	90°
30 6230 46	29	29	21,2	1,1	90°
30 6230 58	29	29	21,2	1,5	90°



CeramTec Best. Nr. CeramTec ref.no.	Abmessungen (mm) Dimensions					
	L ₁	L ₂	L ₃	L ₄	Ø d ₁	A
30 6231 17	40	40	29	28	2,0	70°

По вопросам продаж и поддержки обращайтесь:

Алматы (727)345-47-04
Ангарск (3955)60-70-56
Архангельск (8182)63-90-72
Астрахань (8512)99-46-04
Барнаул (3852)73-04-60
Белгород (4722)40-23-64
Благовещенск (4162)22-76-07
Брянск (4832)59-03-52
Владивосток (423)249-28-31
Владикавказ (8672)28-90-48
Владимир (4922)49-43-18
Волгоград (844)278-03-48
Вологда (8172)26-41-59
Воронеж (473)204-51-73
Екатеринбург (343)384-55-89

Иваново (4932)77-34-06
Ижевск (3412)26-03-58
Иркутск (395)279-98-46
Казань (843)206-01-48
Калининград (4012)72-03-81
Калуга (4842)92-23-67
Кемерово (3842)65-04-62
Киров (8332)68-02-04
Коломна (4966)23-41-49
Кострома (4942)77-07-48
Краснодар (861)203-40-90
Красноярск (391)204-63-61
Курск (4712)77-13-04
Курган (3522)50-90-47
Липецк (4742)52-20-81

Магнитогорск (3519)55-03-13
Москва (495)268-04-70
Мурманск (8152)59-64-93
Набережные Челны (8552)20-53-41
Новокузнецк (3843)20-46-81
Ноябрьск (3496)41-32-12
Новосибирск (383)227-86-73
Омск (3812)21-46-40
Орел (4862)44-53-42
Оренбург (3532)37-68-04
Пенза (8412)22-31-16
Петрозаводск (8142)55-98-37
Псков (8112)59-10-37
Пермь (342)205-81-47

Ростов-на-Дону (863)308-18-15
Рязань (4912)46-61-64
Самара (846)206-03-16
Санкт-Петербург (812)309-46-40
Саратов (845)249-38-78
Севастополь (8692)22-31-93
Саранск (8342)22-96-24
Симферополь (3652)67-13-56
Смоленск (4812)29-41-54
Сочи (862)225-72-31
Ставрополь (8652)20-65-13
Сургут (3462)77-98-35
Сыктывкар (8212)25-95-17
Тамбов (4752)50-40-97
Тверь (4822)63-31-35

Тольятти (8482)63-91-07
Томск (3822)98-41-53
Тула (4872)33-79-87
Тюмень (3452)66-21-18
Ульяновск (8422)24-23-59
Улан-Удэ (3012)59-97-51
Уфа (347)229-48-12
Хабаровск (4212)92-98-04
Чебоксары (8352)28-53-07
Челябинск (351)202-03-61
Череповец (8202)49-02-64
Чита (3022)38-34-83
Якутск (4112)23-90-97
Ярославль (4852)69-52-93

Россия +7(495)268-04-70

Казахстан +(727)345-47-04

Беларусь +(375)257-127-884

Узбекистан +998(71)205-18-59

Киргизия +996(312)96-26-47

эл.почта: cgc@nt-rt.ru || сайт: <https://ceramtec.nt-rt.ru>