

Пигтейлы, валики, аппликаторы

Технические характеристики

По вопросам продаж и поддержки обращайтесь:

Алматы (727)345-47-04
Ангарск (3955)60-70-56
Архангельск (8182)63-90-72
Астрахань (8512)99-46-04
Барнаул (3852)73-04-60
Белгород (4722)40-23-64
Благовещенск (4162)22-76-07
Брянск (4832)59-03-52
Владивосток (423)249-28-31
Владикавказ (8672)28-90-48
Владимир (4922)49-43-18
Волгоград (844)278-03-48
Вологда (8172)26-41-59
Воронеж (473)204-51-73
Екатеринбург (343)384-55-89

Иваново (4932)77-34-06
Ижевск (3412)26-03-58
Иркутск (395)279-98-46
Казань (843)206-01-48
Калининград (4012)72-03-81
Калуга (4842)92-23-67
Кемерово (3842)65-04-62
Киров (8332)68-02-04
Коломна (4966)23-41-49
Кострома (4942)77-07-48
Краснодар (861)203-40-90
Красноярск (391)204-63-61
Курск (4712)77-13-04
Курган (3522)50-90-47
Липецк (4742)52-20-81

Магнитогорск (3519)55-03-13
Москва (495)268-04-70
Мурманск (8152)59-64-93
Набережные Челны (8552)20-53-41
Нижний Новгород (831)429-08-12
Новокузнецк (3843)20-46-81
Ноябрьск (3496)41-32-12
Новосибирск (383)227-86-73
Омск (3812)21-46-40
Орел (4862)44-53-42
Оренбург (3532)37-68-04
Пенза (8412)22-31-16
Петрозаводск (8142)55-98-37
Псков (8112)59-10-37
Пермь (342)205-81-47

Ростов-на-Дону (863)308-18-15
Рязань (4912)46-61-64
Самара (846)206-03-16
Санкт-Петербург (812)309-46-40
Саратов (845)249-38-78
Севастополь (8692)22-31-93
Саранск (8342)22-96-24
Симферополь (3652)67-13-56
Смоленск (4812)29-41-54
Сочи (862)225-72-31
Ставрополь (8652)20-65-13
Сургут (3462)77-98-35
Сыктывкар (8212)25-95-17
Тамбов (4752)50-40-97
Тверь (4822)63-31-35

Тольятти (8482)63-91-07
Томск (3822)98-41-53
Тула (4872)33-79-87
Тюмень (3452)66-21-18
Ульяновск (8422)24-23-59
Улан-Удэ (3012)59-97-51
Уфа (347)229-48-12
Хабаровск (4212)92-98-04
Чебоксары (8352)28-53-07
Челябинск (351)202-03-61
Череповец (8202)49-02-64
Чита (3022)38-34-83
Якутск (4112)23-90-97
Ярославль (4852)69-52-93

Россия +7(495)268-04-70

Казахстан +(727)345-47-04

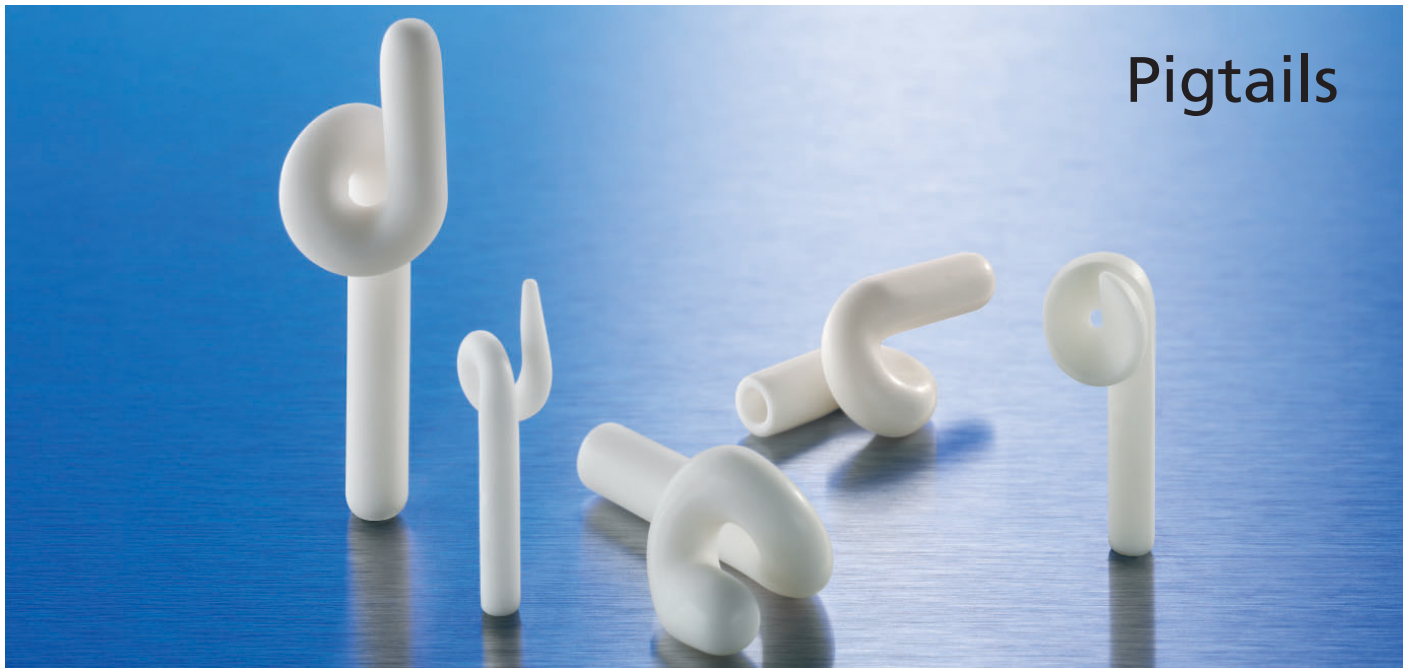
Беларусь +(375)257-127-884

Узбекистан +998(71)205-18-59

Киргизия +996(312)96-26-47

эл.почта: cgc@nt-rt.ru || сайт: <https://ceramtec.nt-rt.ru>

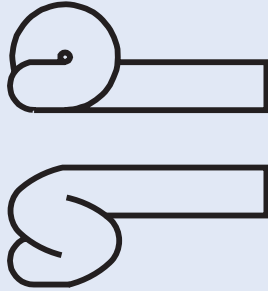
Pigtails



Lieferprogramm Production program

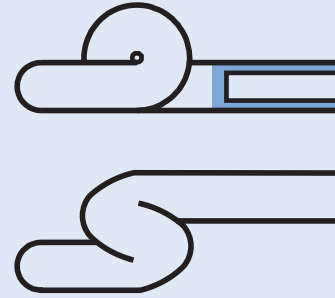
Mechanical Applications Division

CeramTec Best. Nr. CeramTec ref.no.	Abmessungen (mm) Dimensions						Steigung Pitch	Seite Page
	Ø D ₁	Ø D ₂	Ø D ₃	L ₁	L ₂	L ₃		
30 7602 00	6,0	1,5	-	31,75	25,0	-	links · left	4
30 7602 02	5,25	1,5	-	45,0	30,0	-	rechts · right	4
30 7602 03	5,25	1,5	-	45,0	30,0	-	links · left	4
30 7602 04	4,0	1,0	-	24,5	20,0	-	rechts · right	8
30 7602 05	4,0	1,0	-	24,5	20,0	-	links · left	8
30 7602 06	4,0	3,0	-	27,4	20,0	-	rechts · right	8
30 7602 07	4,0	3,0	-	27,4	20,0	-	links · left	8
30 7603 00	6,0	1,5	-	31,75	25,0	-	rechts · right	4
30 7603 01	6,0	1,5	-	30,0	23,0	-	rechts · right	4
30 7604 00	3,15	2,0	-	26,0	18,0	6,0	links · left	6
30 7605 00	3,15	2,0	-	26,0	18,0	4,0	links · left	6
30 7605 02	3,15	2,0	-	26,0	18,0	-	rechts · right	6
30 7605 03	3,10	1,95	-	25,3	17,5	-	links · left	6
30 7607 00	3,0	0,5	-	15,3	12,0	8,0	links · left	7
30 7607 03	3,0	1,0	-	15,5	12,0	4,5	links · left	7
30 7608 00	6,0	1,5	3,2	25,0	10,0	10,0	rechts · right	5
30 7608 02	6,0	1,5	3,2	25,0	10,0	10,0	links · left	5
30 7608 03	6,0	1,5	3,2	19,0	10,0	10,0	rechts · right	5
30 7609 00	6,0	1,8	3,5	36,5	30,0	14,0	links · left	5
30 7611 00	6,0	1,8	3,5	45,0	30,0	14,0	links · left	5
30 7611 01	6,0	1,8	3,5	45,0	30,0	14,0	rechts · right	5
30 7614 00	4,0	2,0	-	22,0	17,0	12,0	links · left	7
30 7617 01	4,0	3,0	-	36,0	30,0	-	links · left	4

Sauschwanzfadenführer • Pigtails

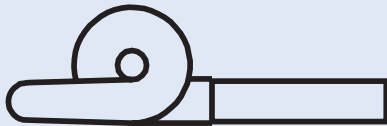
Seite • Page

4



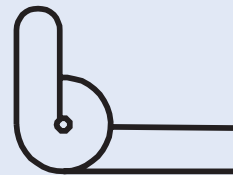
Seite • Page

5



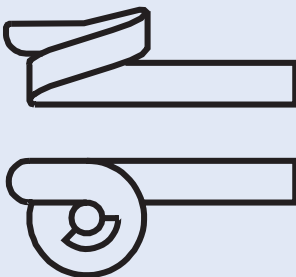
Seite • Page

6



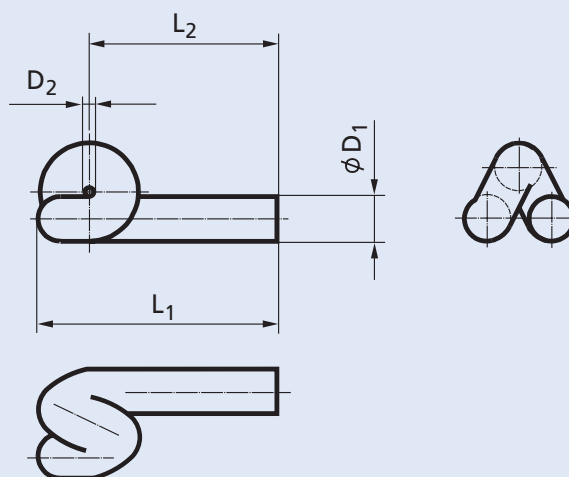
Seite • Page

7

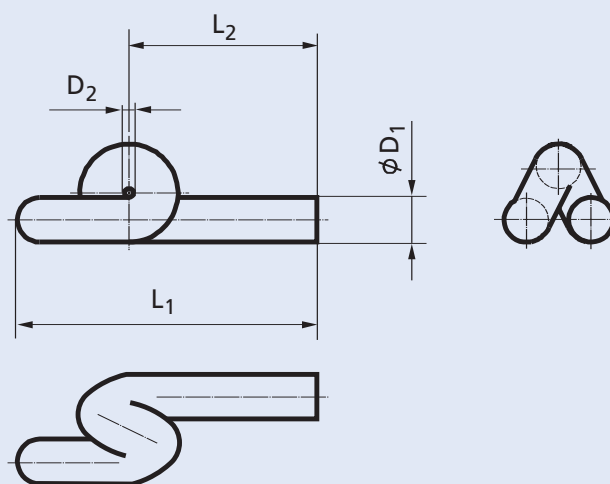


Seite • Page

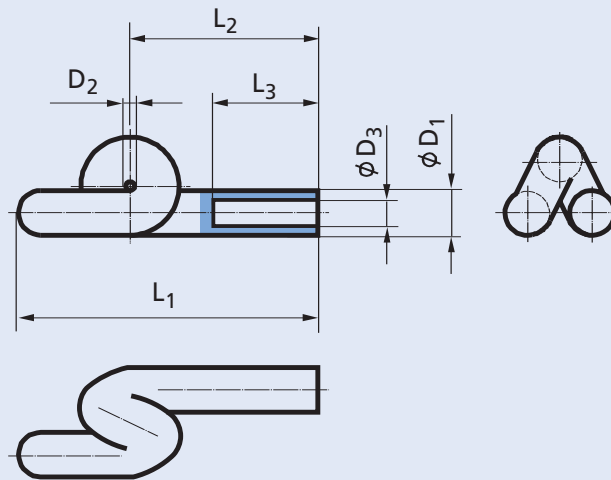
8



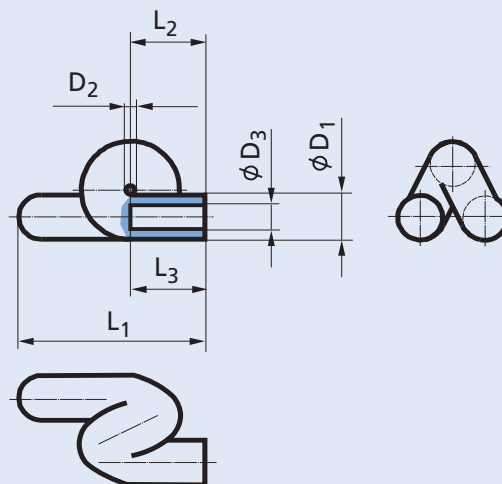
CeramTec Best. Nr. CeramTec ref.no.	Abmessungen (mm) Dimensions						Steigung Pitch
	$\varnothing D_1$	$\varnothing D_2$	$\varnothing D_3$	L_1	L_2	L_3	
30 7602 00	6,00	1,5	-	31,75	25,0	-	links · left
30 7603 00	6,00	1,5	-	31,75	25,0	-	rechts · right
30 7603 01	6,00	1,5	-	30,00	23,0	-	rechts · right
30 7617 01	4,00	3,0	-	36,00	30,0	-	links · left



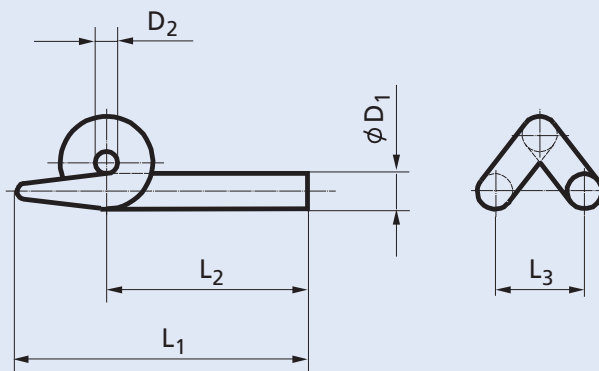
CeramTec Best. Nr. CeramTec ref.no.	Abmessungen (mm) Dimensions						Steigung Pitch
	$\varnothing D_1$	$\varnothing D_2$	$\varnothing D_3$	L_1	L_2	L_3	
30 7602 02	5,25	1,5	-	45,0	30,0	-	rechts · right
30 7602 03	5,25	1,5	-	45,0	30,0	-	links · left



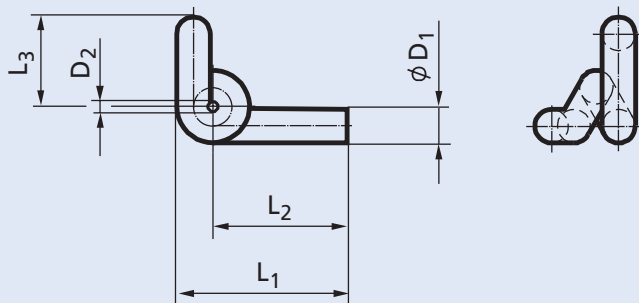
CeramTec Best. Nr. CeramTec ref.no.	Abmessungen (mm) Dimensions						Steigung Pitch
	$\varnothing D_1$	$\varnothing D_2$	$\varnothing D_3$	L_1	L_2	L_3	
30 7609 00	6,0	1,8	3,5	36,5	30,0	14,0	links · left
30 7611 00	6,0	1,8	3,5	45,0	30,0	14,0	links · left
30 7611 01	6,0	1,8	3,5	45,0	30,0	14,0	rechts · right



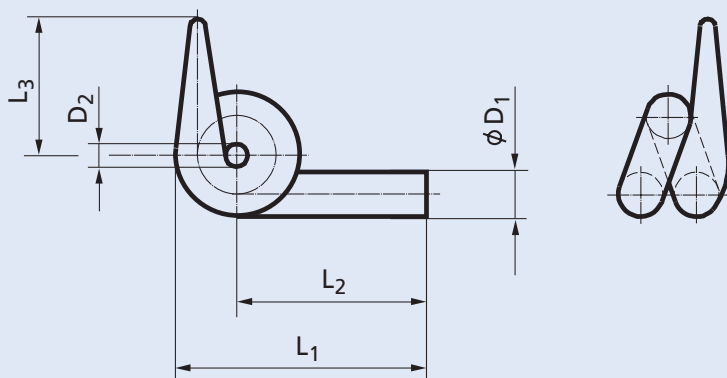
CeramTec Best. Nr. CeramTec ref.no.	Abmessungen (mm) Dimensions						Steigung Pitch
	$\varnothing D_1$	$\varnothing D_2$	$\varnothing D_3$	L_1	L_2	L_3	
30 7608 00	6,0	1,5	3,2	25,0	10,0	10,0	rechts · right
30 7608 02	6,0	1,5	3,2	25,0	10,0	10,0	links · left
30 7608 03	6,0	1,5	3,2	19,0	10,0	10,0	rechts · right



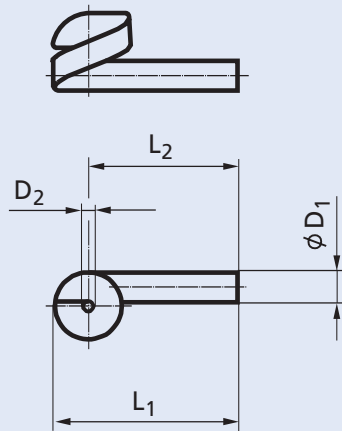
CeramTec Best. Nr. CeramTec ref.no.	Abmessungen (mm) Dimensions						Steigung Pitch
	ϕD_1	ϕD_2	ϕD_3	L_1	L_2	L_3	
30 7604 00	3,15	2,0	-	26,0	18,0	6,0	links · left
30 7605 00	3,15	2,0	-	26,0	18,0	4,0	links · left
30 7605 02	3,15	2,0	-	26,0	18,0	-	rechts · right
30 7605 03	3,10	1,95	-	25,3	17,5	-	links · left



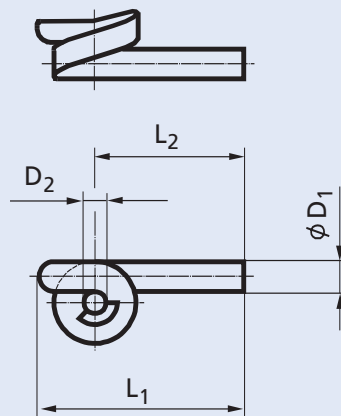
CeramTec Best. Nr. CeramTec ref.no.	Abmessungen (mm) Dimensions						Steigung Pitch
	ϕD_1	ϕD_2	ϕD_3	L_1	L_2	L_3	
30 7607 00	3,0	0,5	-	15,3	12,0	8,0	links · left
30 7607 03	3,0	1,0	-	15,5	12,0	4,5	links · left



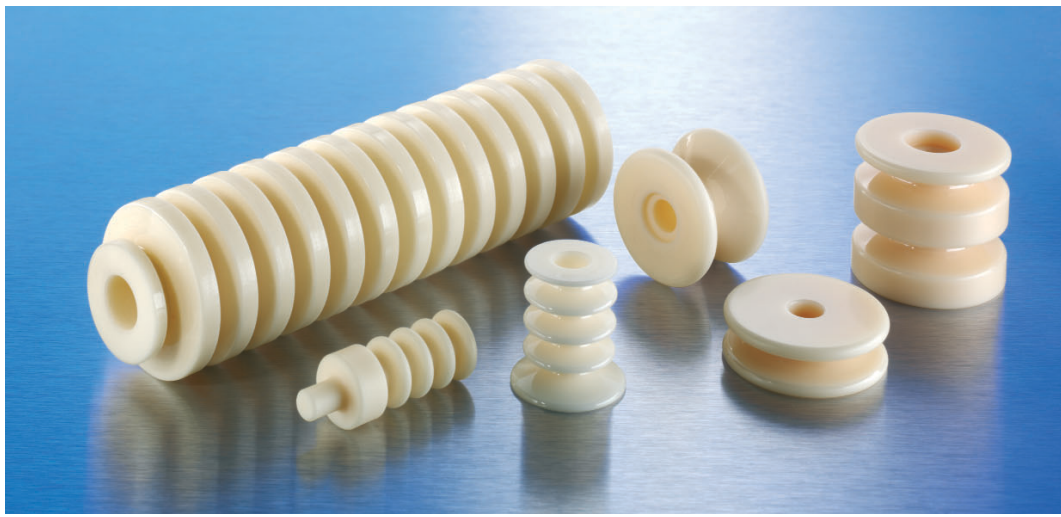
CeramTec Best. Nr. CeramTec ref.no.	Abmessungen (mm) Dimensions						Steigung Pitch
	ϕD_1	ϕD_2	ϕD_3	L_1	L_2	L_3	
30 7614 00	4,0	2,0	-	22,0	17,0	12,0	links · left



CeramTec Best. Nr. CeramTec ref.no.	Abmessungen (mm) Dimensions						Steigung Pitch
	ϕD_1	ϕD_2	ϕD_3	L_1	L_2	L_3	
30 7602 04	4,0	1,0	-	24,5	20,0	-	rechts • right
30 7602 05	4,0	1,0	-	24,5	20,0	-	links • left



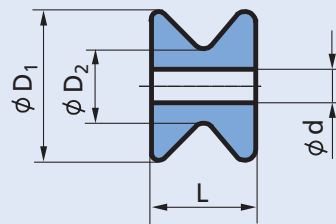
CeramTec Best. Nr. CeramTec ref.no.	Abmessungen (mm) Dimensions						Steigung Pitch
	ϕD_1	ϕD_2	ϕD_3	L_1	L_2	L_3	
30 7602 06	4,0	3,0	-	27,4	20,0	-	rechts • right
30 7602 07	4,0	3,0	-	27,4	20,0	-	links • left



Rollen Rollers

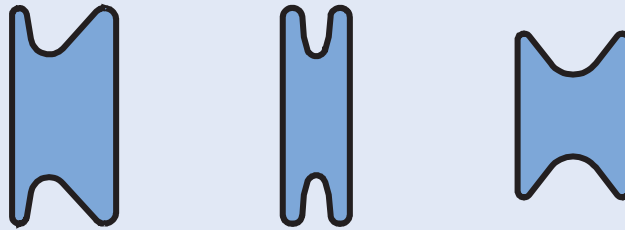
Lieferprogramm Production program

Mechanical Applications Division



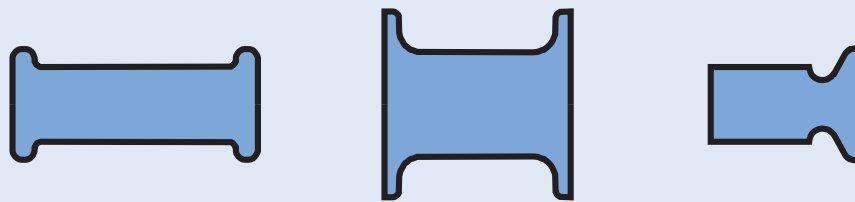
CeramTec Best. Nr. CeramTec ref.no.	Abmessungen (mm) Dimensions				Seite Page	CeramTec Best. Nr. CeramTec ref.no.	Abmessungen (mm) Dimensions				Seite Page
	D ₁	D ₂	d	L			D ₁	D ₂	d	L	
30 8220 00	12,0	5,0	-	34,0	11	30 8239 02	20,0	9,0	5,5	32,0	10
30 8406 69	12,0	8,0	5,6	14,0	4	30 8402 00	20,0	10,0	3,2	13,6	5
30 8406 30	12,5	6,5	3,5	27,0	8	30 8360 10	20,0	10,0	4,5	14,0	5
30 8212 00	15,0	6,5	3,5	20,0	8	30 8383 00	20,0	14,0	6,5	8,0	5
30 8339 00	15,0	8,0	4,2	30,0	9	30 8399 00	21,5	9,5	5,0	50,0	11
30 8215 00	15,0	10,0	6,0	33,0	7	30 8360 11	23,0	9,0	5,0	40,0	9
30 8406 44	15,0	10,0	6,2	10,0	4	30 8242 01	23,6	16,5	5,9	47,2	7
30 8224 00	16,2	10,7	6,2	26,0	11	30 8406 31	25,0	14,0	8,1	25,0	7
30 8205 00	16,6	10,0	6,5	13,7	7	30 8406 32	25,0	20,0	10,0	8,0	5
30 8281 00	16,6	10,0	6,5	17,7	7	30 8406 48	29,0	16,0	6,0	9,0	6
30 8201 00	17,0	8,0	6,0	7,0	4	30 8406 42	29,0	16,0	6,0	26,0	9
30 8117 02	17,0	8,0	6,0	23,0	9	30 8386 02	29,0	16,5	6,2	14,0	5
30 8217 01	17,0	8,0	6,0	20,0	9	30 8406 47	29,0	16,5	12,2	14,0	5
30 8360 06	17,0	10,0	3,5	10,0	4	30 8406 68	29,0	24,0	6,0	9,0	6
30 8401 00	18,0	9,5	4,5	11,0	4	30 8208 00	30,0	20,0	9,0	10,0	6
30 8406 72	18,0	10,0	5,5	33,0	9	30 8287 00	31,8	12,7	6,35	19,1	8
30 8398 00	19,5	11,7	6,0	66,0	7	30 8360 05	31,8	14,3	6,35	19,0	8
30 8216 00	20,0	8,0	5,5	17,0	10	30 8332 00	33,0	12,0	5,5	40,5	10
30 8343 00	20,0	8,0	6,0	10,0	4	30 8406 36	40,0	20,0	10,5	15,0	6
30 8239 00	20,0	8,0	6,0	22,0	10	30 8253 01	47,0	36,3	13,0	11,0	6
30 8239 01	20,0	9,0	5,5	22,0	10	30 8240 00	50,8	38,0	30,0	10,55	6

Rollen • Rollers



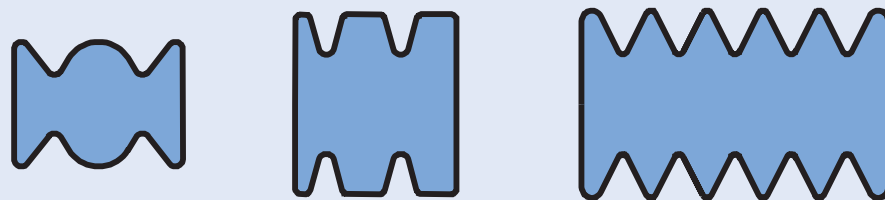
Seite • Page

3 - 6



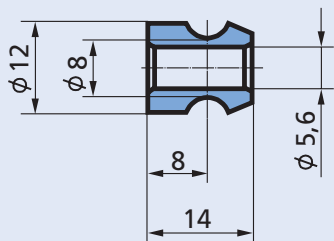
Seite • Page

7 - 8



Seite • Page

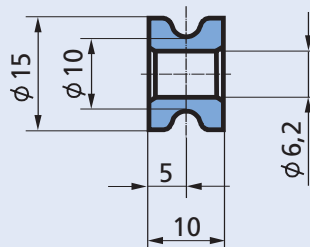
9 - 12



M 1:1

CeramTec Best. Nr.
CeramTec ref.no.

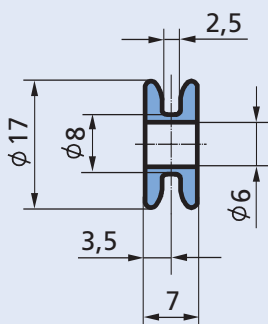
30 8406 69



M 1:1

CeramTec Best. Nr.
CeramTec ref.no.

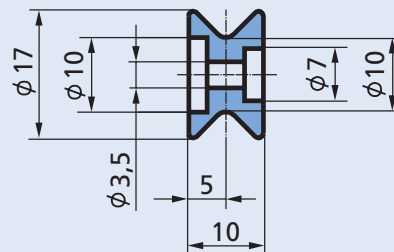
30 8406 44



M 1:1

CeramTec Best. Nr.
CeramTec ref.no.

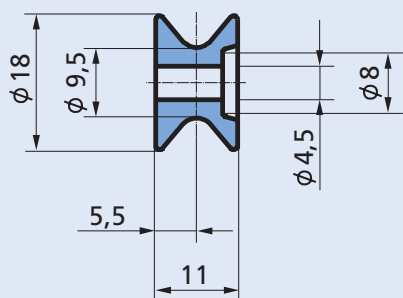
30 8201 00



M 1:1

CeramTec Best. Nr.
CeramTec ref.no.

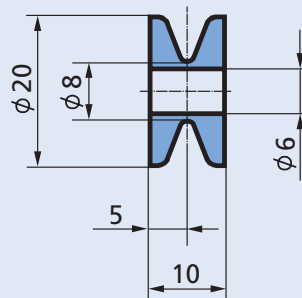
30 8360 06



M 1:1

CeramTec Best. Nr.
CeramTec ref.no.

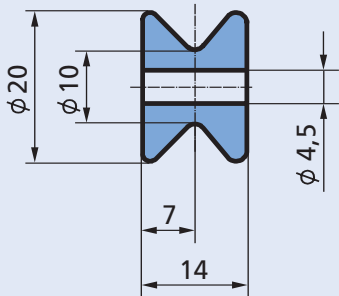
30 8401 00



M 1:1

CeramTec Best. Nr.
CeramTec ref.no.

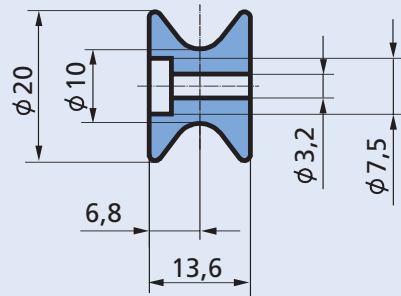
30 8343 00



M 1:1

CeramTec Best. Nr.
CeramTec ref.no.

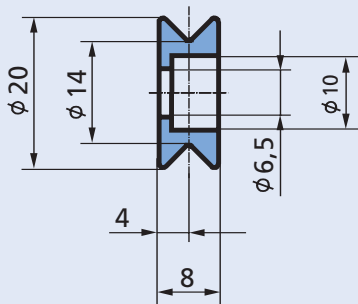
30 8360 10



M 1:1

CeramTec Best. Nr.
CeramTec ref.no.

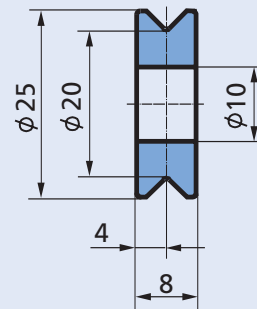
30 8402 00



M 1:1

CeramTec Best. Nr.
CeramTec ref.no.

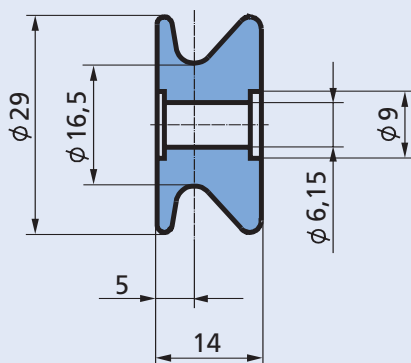
30 8383 00



M 1:1

CeramTec Best. Nr.
CeramTec ref.no.

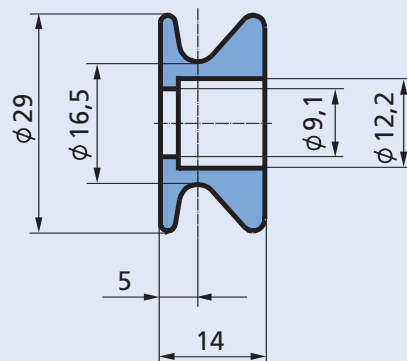
30 8406 32



M 1:1

CeramTec Best. Nr.
CeramTec ref.no.

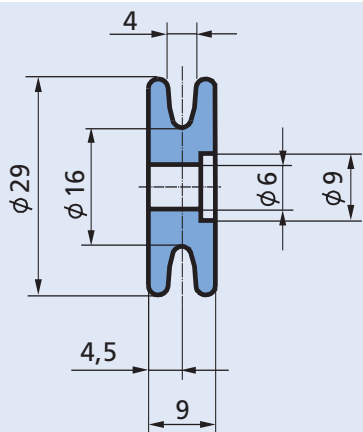
30 8386 02



M 1:1

CeramTec Best. Nr.
CeramTec ref.no.

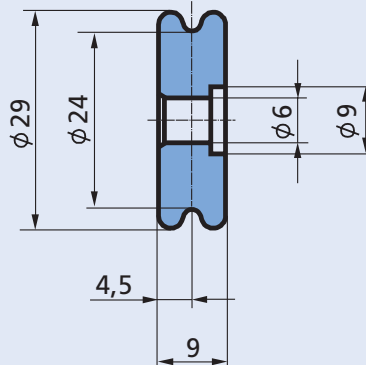
30 8406 47



M 1:1

CeramTec Best. Nr.
CeramTec ref.no.

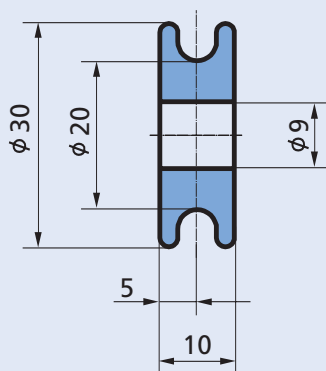
30 8406 48



M 1:1

CeramTec Best. Nr.
CeramTec ref.no.

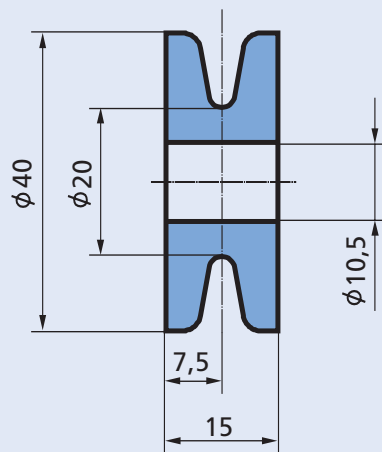
30 8406 68



M 1:1

CeramTec Best. Nr.
CeramTec ref.no.

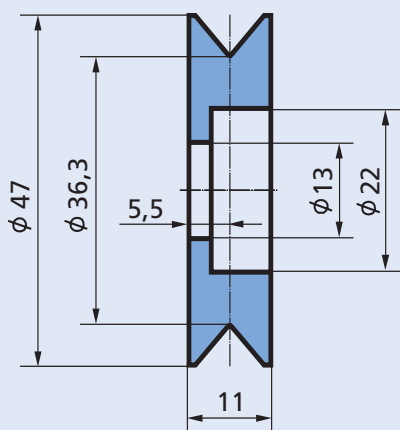
30 8208 00



M 1:1

CeramTec Best. Nr.
CeramTec ref.no.

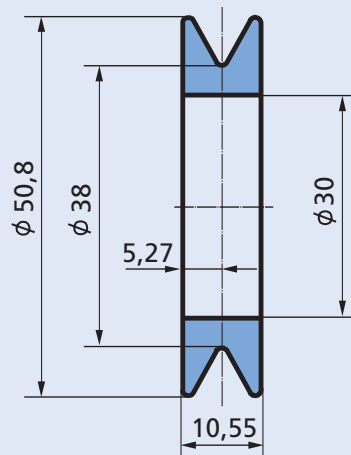
30 8406 36



M 1:1

CeramTec Best. Nr.
CeramTec ref.no.

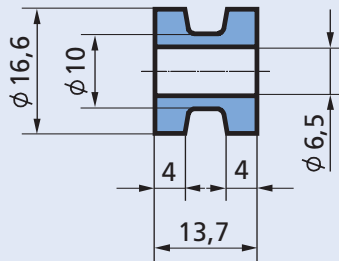
30 8253 01



M 1:1

CeramTec Best. Nr.
CeramTec ref.no.

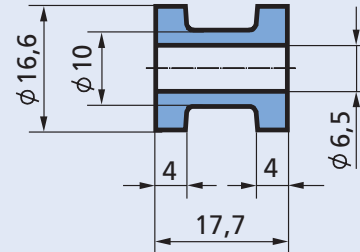
30 8240 00



M 1:1

CeramTec Best. Nr.
CeramTec ref.no.

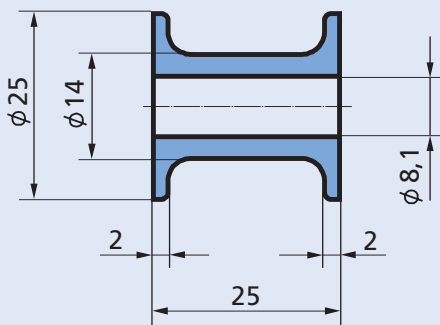
30 8205 00



M 1:1

CeramTec Best. Nr.
CeramTec ref.no.

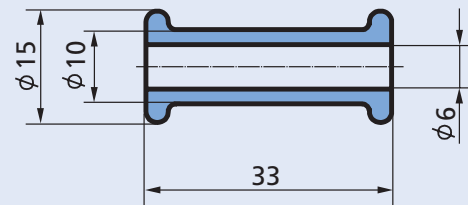
30 8281 00



M 1:1

CeramTec Best. Nr.
CeramTec ref.no.

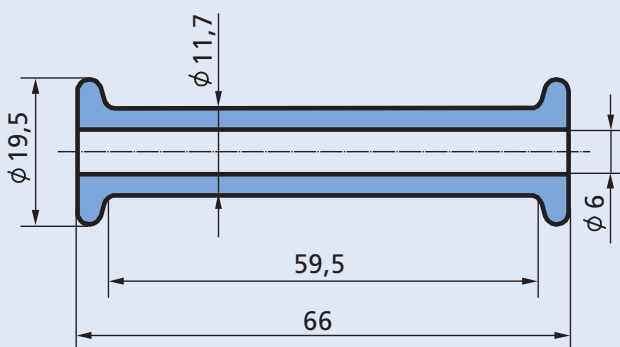
30 8406 31



M 1:1

CeramTec Best. Nr.
CeramTec ref.no.

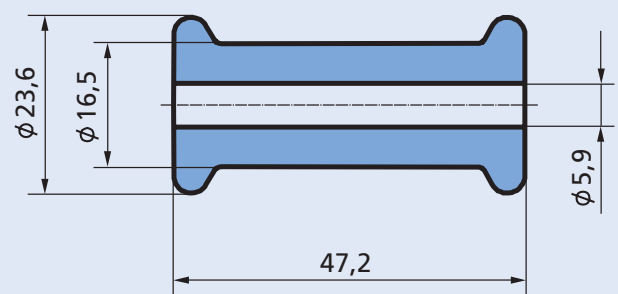
30 8215 00



M 1:1

CeramTec Best. Nr.
CeramTec ref.no.

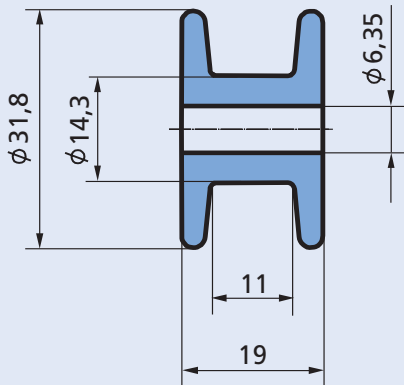
30 8398 00



M 1:1

CeramTec Best. Nr.
CeramTec ref.no.

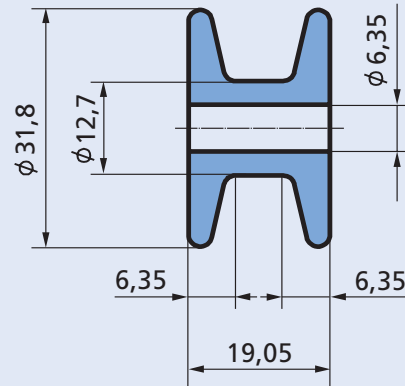
30 8242 01



M 1:1

CeramTec Best. Nr.
CeramTec ref.no.

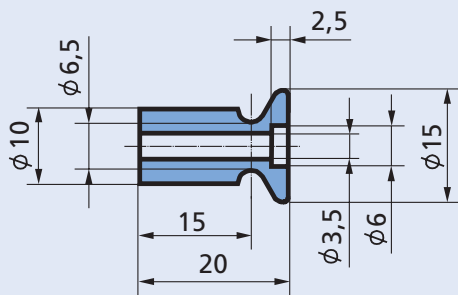
30 8360 05



M 1:1

CeramTec Best. Nr.
CeramTec ref.no.

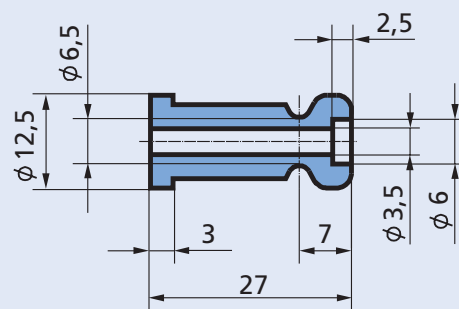
30 8287 00



M 1:1

CeramTec Best. Nr.
CeramTec ref.no.

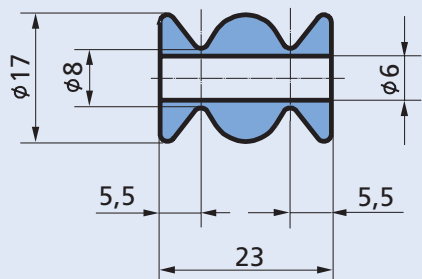
30 8212 00



M 1:1

CeramTec Best. Nr.
CeramTec ref.no.

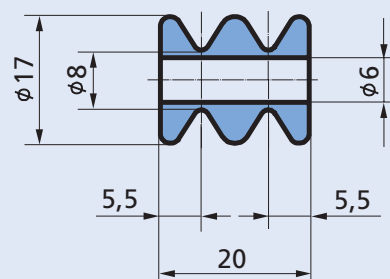
30 8406 30



M 1:1

CeramTec Best. Nr.
CeramTec ref.no.

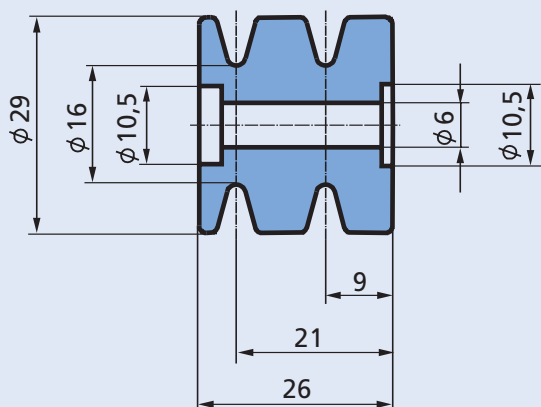
30 8217 02



M 1:1

CeramTec Best. Nr.
CeramTec ref.no.

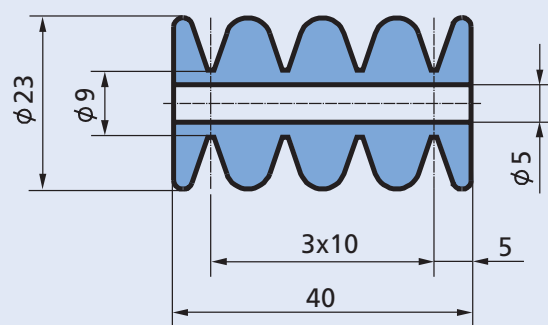
30 8217 01



M 1:1

CeramTec Best. Nr.
CeramTec ref.no.

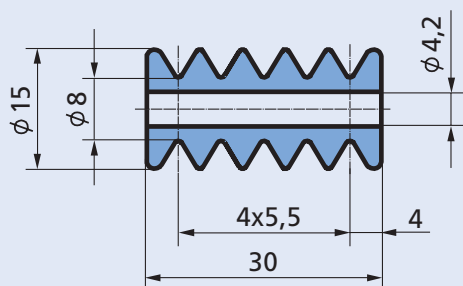
30 8406 42



M 1:1

CeramTec Best. Nr.
CeramTec ref.no.

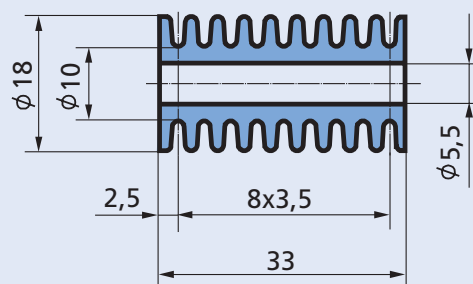
30 8360 11



M 1:1

CeramTec Best. Nr.
CeramTec ref.no.

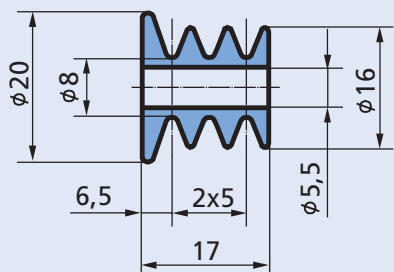
30 8339 00



M 1:1

CeramTec Best. Nr.
CeramTec ref.no.

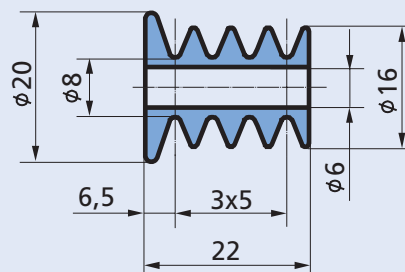
30 8406 72



M 1:1

CeramTec Best. Nr.
CeramTec ref.no.

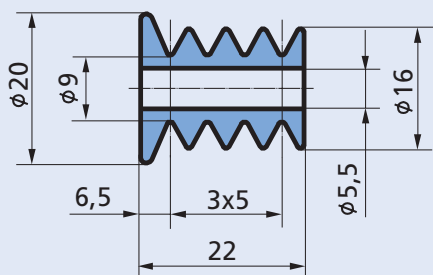
30 8216 00



M 1:1

CeramTec Best. Nr.
CeramTec ref.no.

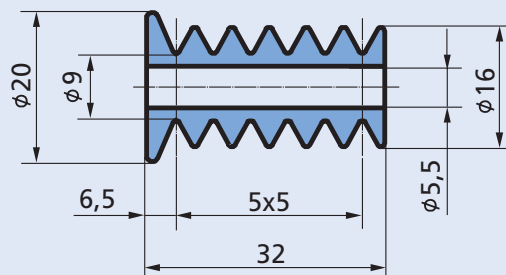
30 8239 00



M 1:1

CeramTec Best. Nr.
CeramTec ref.no.

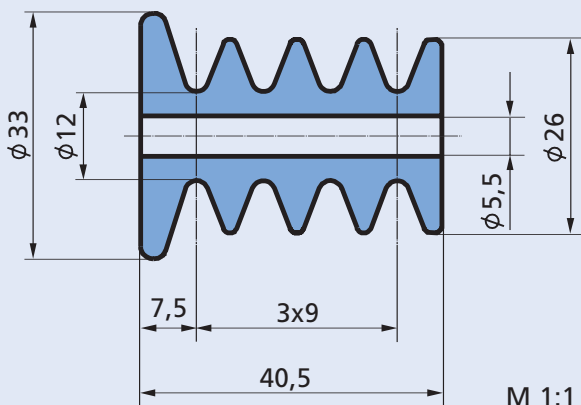
30 8239 01



M 1:1

CeramTec Best. Nr.
CeramTec ref.no.

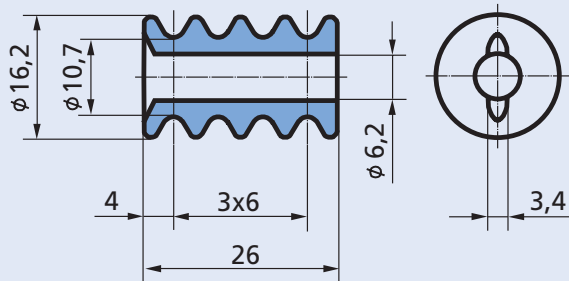
30 8239 02



M 1:1

CeramTec Best. Nr.
CeramTec ref.no.

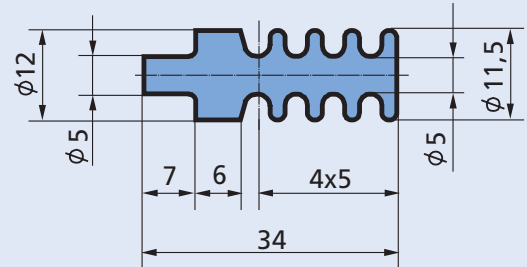
30 8332 00



M 1:1

CeramTec Best. Nr.
CeramTec ref.no.

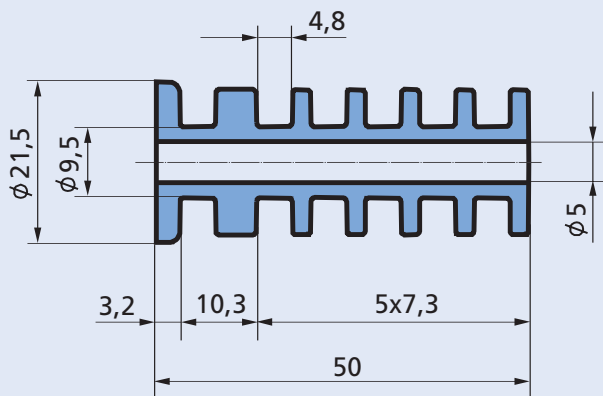
30 8224 00



M 1:1

CeramTec Best. Nr.
CeramTec ref.no.

30 8220 00



M 1:1

CeramTec Best. Nr.
CeramTec ref.no.

30 8399 00



Präparationsfadenführer

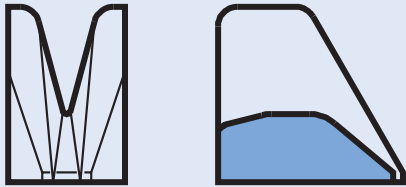
Spin finish applicators

Lieferprogramm
Production program

Mechanical Applications Division

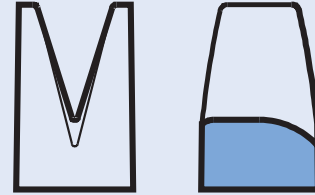
CeramTec Best. Nr. CeramTec ref.no.	Abmessungen (mm) Dimensions							Anzahl Reservoirs Pockets	Seite Page
	B / ØD	L ₁	L ₂	L ₃	A	Ø D ₁	Ø d		
30 6398 01	12	-	19	-	0,6	7,85	0,7	-	6
30 6398 08	14	-	16	-	0,6	8	0,6	-	6
30 6421 00	18,5	16	25	-	1,0	4	0,9	-	8
30 6446 06	22,5	14	17,5	-	1,0	-	0,8	-	8
30 6486 00	12	19	18	-	0,8	10	0,8	-	4
30 6486 76	12	19	18	-	0,8	10	0,8	-	4
30 6486 82	10,8	24,5	24,4	-	1,0	6	1	-	6
30 6486 90	12	34	27	-	0,8	5,05	0,8	2	4
30 6486 91	12	30	20	-	0,6	5	0,8 x 2,5	2	4
30 6486 93	12	30	20	-	0,5	8,2	0,5	1	5
30 6487 16	12	32	23	41	0,5	10	0,6 x 3,0	1	7
30 6487 54	12	30	20	38	0,6	10	0,6	1	7
30 6487 60	12	33	20	-	1,0	8	1	3	5
30 6487 61	12	19,5	18	29	0,8	8	0,8	-	7
30 6487 66	12	33	20	-	1,0	10	1	3	5
30 6487 70	12	28,6	16	-	1,0	8	1	3	5
30 6487 73	12	33	20	-	1,5	10	1,1 x 2,4	2	5
30 6487 74	12	33	20	-	2,0	10	1,1 x 3,2	2	5
40 5039 17	12	33	20	45	1,0	10,05	1	3	7

Präparationsfadeführer • Spin finish applicator



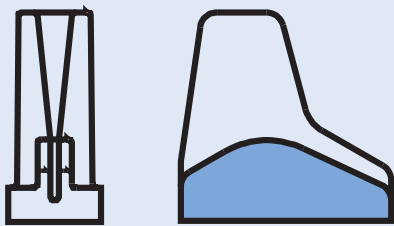
Seite • Page

4 - 5



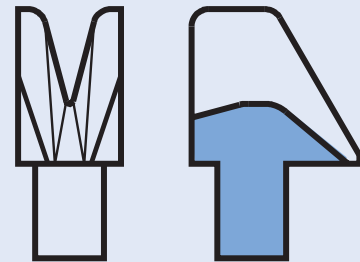
Seite • Page

6



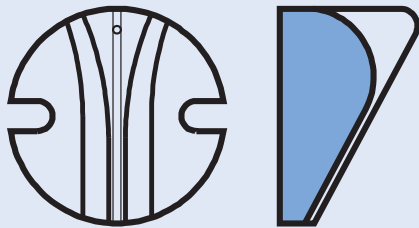
Seite • Page

6



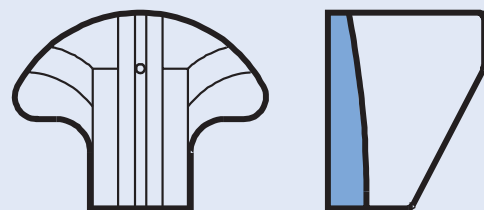
Seite • Page

7



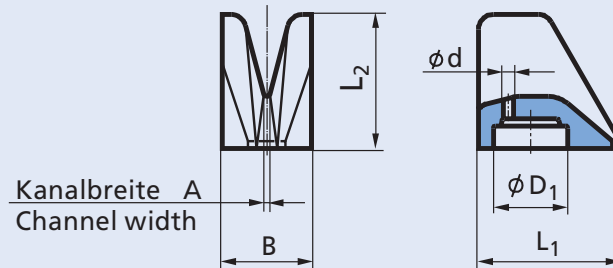
Seite • Page

8

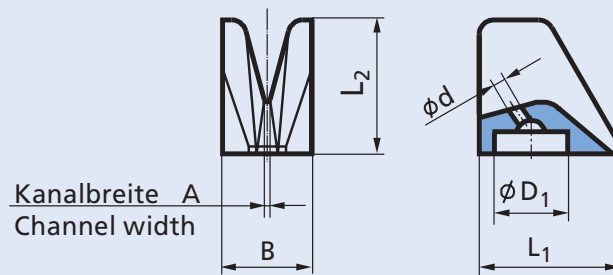


Seite • Page

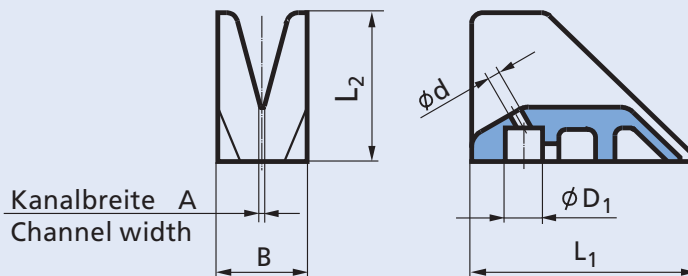
8



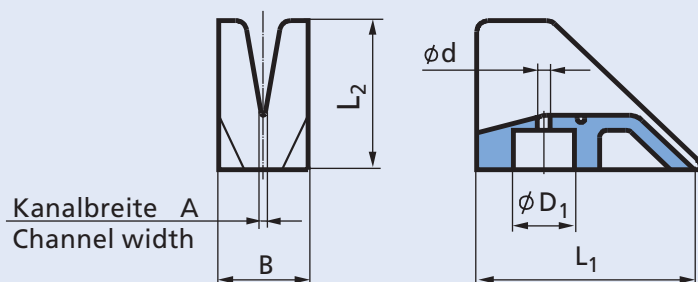
CeramTec Best. Nr. CeramTec ref.no.	Abmessungen (mm) Dimensions						Anzahl Reservoirs Pockets
	B	L ₁	L ₂	A	ø D ₁	ø d	
30 6486 00	12	19	18	0,8	10,0	0,8	-



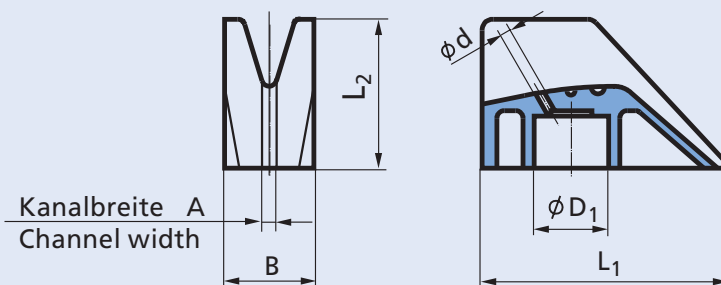
CeramTec Best. Nr. CeramTec ref.no.	Abmessungen (mm) Dimensions						Anzahl Reservoirs Pockets
	B	L ₁	L ₂	A	ø D ₁	ø d	
30 6486 76	12	19	18	0,8	10,0	0,8	-



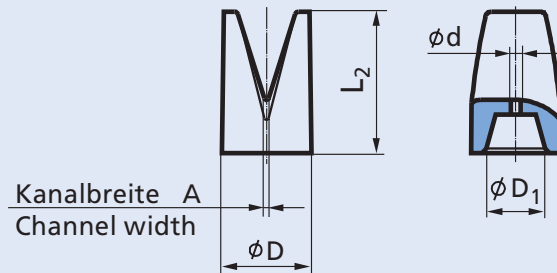
CeramTec Best. Nr. CeramTec ref.no.	Abmessungen (mm) Dimensions						Anzahl Reservoirs Pockets
	B	L ₁	L ₂	A	ø D ₁	ø d	
30 6486 90	12	34	27	0,8	5,05	0,8	2
30 6486 91	12	30	20	0,6	5,00	0,8 x 2,5	2



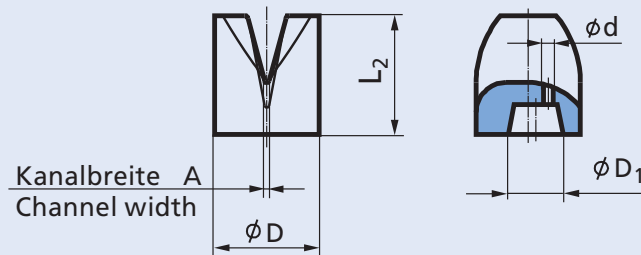
CeramTec Best. Nr. CeramTec ref.no.	Abmessungen (mm) Dimensions						Anzahl Reservoirs Pockets
	B	L ₁	L ₂	A	∅ D ₁	∅ d	
30 6486 93	12	30	20	0,5	8,2	0,5	1



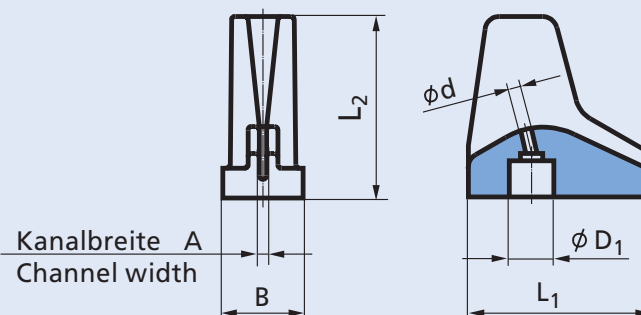
CeramTec Best. Nr. CeramTec ref.no.	Abmessungen (mm) Dimensions						Anzahl Reservoirs Pockets
	B	L ₁	L ₂	A	∅ D ₁	∅ d	
30 6487 60	12	33,0	20	1,0	8,0	1,0	3
30 6487 66	12	33,0	20	1,0	10,0	1,0	3
30 6487 70	12	28,6	16	1,0	8,0	1,0	3
30 6487 73	12	33,0	20	1,5	10,0	1,1 x 2,4	2
30 6487 74	12	33,0	20	2,0	10,0	1,1 x 3,2	2



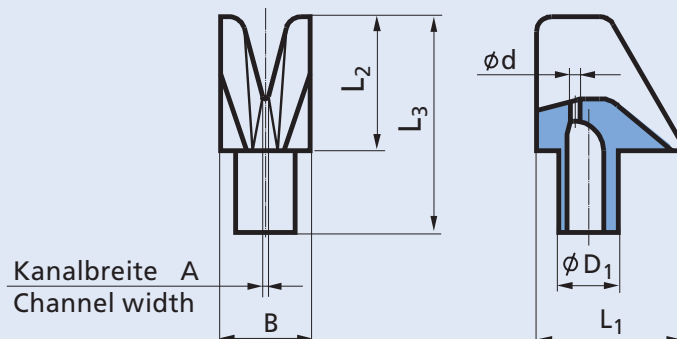
CeramTec Best. Nr. CeramTec ref.no.	Abmessungen (mm) Dimensions							Anzahl Reservoirs Pockets
	Ø D	L ₁	L ₂	L ₃	A	Ø D ₁	Ø d	
30 6398 01	12,0	-	19,0	-	0,6	7,85	0,7	-



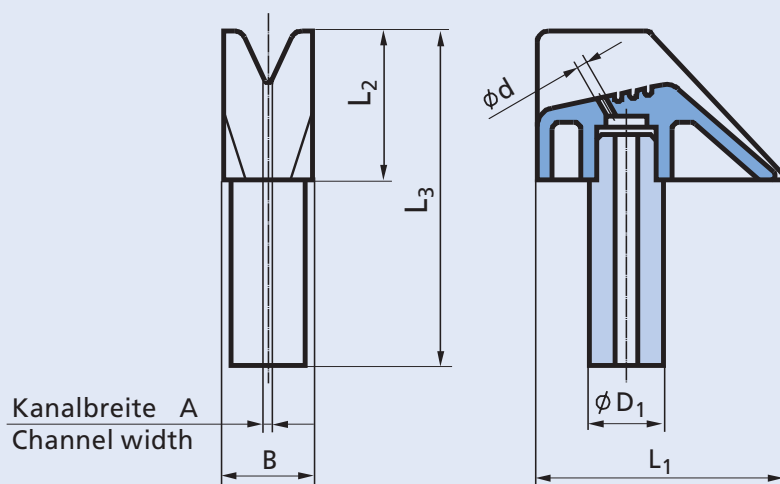
CeramTec Best. Nr. CeramTec ref.no.	Abmessungen (mm) Dimensions							Anzahl Reservoirs Pockets
	Ø D	L ₁	L ₂	L ₃	A	Ø D ₁	Ø d	
30 6398 08	14,0	-	16,0	-	0,6	8,0	0,6	-



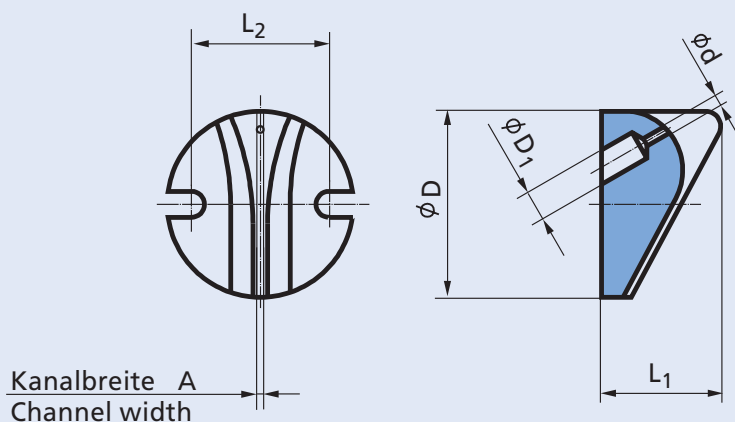
CeramTec Best. Nr. CeramTec ref.no.	Abmessungen (mm) Dimensions							Anzahl Reservoirs Pockets
	B	L ₁	L ₂	L ₃	A	Ø D ₁	Ø d	
30 6486 82	10,8	24,5	24,4	-	1,0	6,0	1,0	-



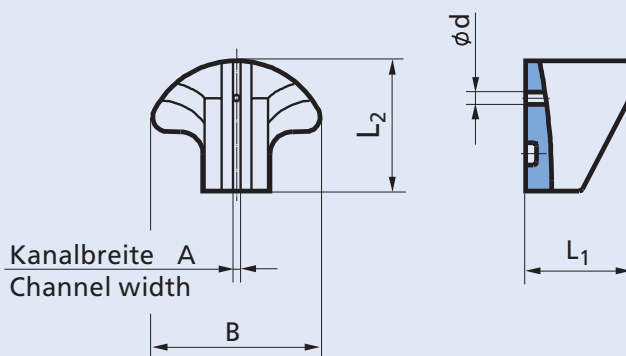
CeramTec Best. Nr. CeramTec ref.no.	Abmessungen (mm) Dimensions							Anzahl Reservoirs Pockets
	B	L ₁	L ₂	L ₃	A	∅ D ₁	∅ d	
30 6487 16	12	32,0	23,0	41	0,5	10,0	0,6 x 3,0	1
30 6487 54	12	30,0	20,0	38	0,6	10,0	0,6	1
30 6487 61	12	19,5	18,0	29	0,8	8,0	0,8	-



CeramTec Best. Nr. CeramTec ref.no.	Abmessungen (mm) Dimensions							Anzahl Reservoirs Pockets
	B	L ₁	L ₂	L ₃	A	∅ D ₁	∅ d	
40 5039 17	12	33,0	20,0	45	1,0	10,05	1,0	3



CeramTec Best. Nr. CeramTec ref.no.	Abmessungen (mm) Dimensions							Anzahl Reservoirs Pockets
	ØD	L ₁	L ₂	L ₃	A	ØD ₁	Ød	
30 6421 00	25	16,0	18,5	-	1,0	4,0	0,9	-



CeramTec Best. Nr. CeramTec ref.no.	Abmessungen (mm) Dimensions							Anzahl Reservoirs Pockets
	B	L ₁	L ₂	L ₃	A	ØD ₁	Ød	
30 6446 06	22,5	14,0	17,5	-	1,0	-	0,8	-

По вопросам продаж и поддержки обращайтесь:

Алматы (727)345-47-04
Ангарск (3955)60-70-56
Архангельск (8182)63-90-72
Астрахань (8512)99-46-04
Барнаул (3852)73-04-60
Белгород (4722)40-23-64
Благовещенск (4162)22-76-07
Брянск (4832)59-03-52
Владивосток (423)249-28-31
Владикавказ (8672)28-90-48
Владимир (4922)49-43-18
Волгоград (844)278-03-48
Вологда (8172)26-41-59
Воронеж (473)204-51-73
Екатеринбург (343)384-55-89

Иваново (4932)77-34-06
Ижевск (3412)26-03-58
Иркутск (395)279-98-46
Казань (843)206-01-48
Калининград (4012)72-03-81
Калуга (4842)92-23-67
Кемерово (3842)65-04-62
Киров (8332)68-02-04
Коломна (4966)23-41-49
Кострома (4942)77-07-48
Краснодар (861)203-40-90
Красноярск (391)204-63-61
Курск (4712)77-13-04
Курган (3522)50-90-47
Липецк (4742)52-20-81

Магнитогорск (3519)55-03-13
Москва (495)268-04-70
Мурманск (8152)59-64-93
Набережные Челны (8552)20-53-41
Новокузнецк (3843)20-46-81
Ноябрьск (3496)41-32-12
Новосибирск (383)227-86-73
Омск (3812)21-46-40
Орел (4862)44-53-42
Оренбург (3532)37-68-04
Пенза (8412)22-31-16
Петрозаводск (8142)55-98-37
Псков (8112)59-10-37
Пермь (342)205-81-47

Ростов-на-Дону (863)308-18-15
Рязань (4912)46-61-64
Самара (846)206-03-16
Санкт-Петербург (812)309-46-40
Саратов (845)249-38-78
Севастополь (8692)22-31-93
Саранск (8342)22-96-24
Симферополь (3652)67-13-56
Смоленск (4812)29-41-54
Сочи (862)225-72-31
Ставрополь (8652)20-65-13
Сургут (3462)77-98-35
Сыктывкар (8212)25-95-17
Тамбов (4752)50-40-97
Тверь (4822)63-31-35

Тольятти (8482)63-91-07
Томск (3822)98-41-53
Тула (4872)33-79-87
Тюмень (3452)66-21-18
Ульяновск (8422)24-23-59
Улан-Удэ (3012)59-97-51
Уфа (347)229-48-12
Хабаровск (4212)92-98-04
Чебоксары (8352)28-53-07
Челябинск (351)202-03-61
Череповец (8202)49-02-64
Чита (3022)38-34-83
Якутск (4112)23-90-97
Ярославль (4852)69-52-93

Россия +7(495)268-04-70

Казахстан +(727)345-47-04

Беларусь +(375)257-127-884

Узбекистан +998(71)205-18-59

Киргизия +996(312)96-26-47

эл.почта: cgc@nt-rt.ru || сайт: <https://ceramtec.nt-rt.ru>